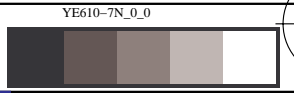


see similar files: http://130.149.60.45/~farbmetrik/YE61/YE61.HTM
technical information: http://www.ps.bam.de or http://130.149.60.45/~farbmetrik

TUB registration: 20140801-YE61/YE61LONP.PDF /PS
application for measurement of display or printer output
TUB material: code=rh44ta

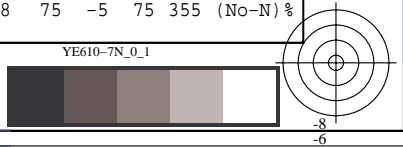
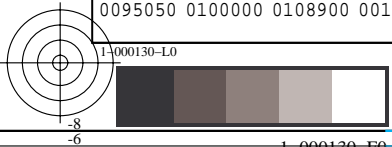
Table with columns: %Xn, Yn, Zn, X0, Y0, Z0, X1, Y1, Z1, DV, dE*ab, dE*76, dE*94, dE*CM, dE*00, dE*85, NR, L*0, a*0, b*0, C*0, h0, L*1, a*1, b*1, C*1, h1, CODE %



see similar files: http://130.149.60.45/~farbmetrik/YE61/YE61L0NP.PDF /.PS
technical information: http://www.ps.bam.de or http://130.149.60.45/~farbmetrik

Table with columns: %Xn, Yn, Zn, X0, Y0, Z0, X1, Y1, Z1, DV, dE*ab, dE*76, dE*94, dE*CM, dE*00, dE*85, NR, L*0, a*0, b*0, C*0, h0, L*1, a*1, b*1, C*1, h1, CODE %

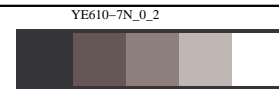
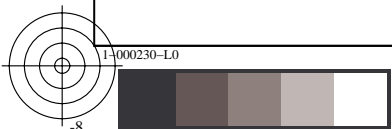
TUB registration: 20140801-YE61/YE61L0NP.PDF /.PS
TUB material: code=rh4ta
application for measurement of display or printer output, no separation



%Xn	Yn	Zn	X0	Y0	Z0	X1	Y1	Z1	DV	dE*ab	dE*76	dE*94	dE*CM	dE*00	dE*85	NR	L*0	a*0	b*0	C*0	h0	L*1	a*1	b*1	C*1	h1	CODE %
%1000*(CIEXYZ & DV) for all colours (a) of experiment, iimp=106, colour difference pairs VA_LV106, xchart3=1, xchart4=0 %																											
0095050	0100000	0108900	0031564	0016801	0008907	0032474	0016544	0020959	0004513	02958	02959	01400	01278	01440	10718	61000101	48	70	23	74	18	48	75	-5	75	355	(Y-Yn) %
0095050	0100000	0108900	0031564	0016801	0008907	0030157	0016753	0002527	0003475	03003	03007	01359	01721	01447	04629	61000102	48	70	23	74	18	48	65	53	84	39	(Yn-YN) %
0095050	0100000	0108900	0046533	0039404	0004835	0030157	0016753	0002527	0007809	04888	04888	02900	04223	03110	20982	61000103	69	27	75	80	70	48	65	53	84	39	(YN-Ny) %
0095050	0100000	0108900	0046533	0039404	0004835	0066702	0073903	0007494	0009141	04654	04653	02650	02645	02557	16221	61000104	69	27	75	80	70	89	-7	98	99	94	(Ny-N) %
0095050	0100000	0108900	0028031	0040716	0007177	0066703	0073927	0007609	0006787	04710	04710	02609	02303	02260	14989	61000105	70	-37	67	77	119	89	-7	98	98	94	(L-Ln) %
0095050	0100000	0108900	0028031	0040716	0007177	0009666	0020820	0006752	0008689	04144	04145	02449	02168	02114	15834	61000106	70	-37	67	77	119	53	-62	39	74	147	(Ln-LN) %

see similar files: <http://130.149.60.45/~farbmetrik/YE61/YE61.HTM>
 technical information: <http://www.ps.bam.de> or <http://130.149.60.45/~farbmetrik>

TUB registration: 20140801-YE61/YE61L0NP.PDF /.PS TUB material: code=rh4ta
 application for measurement of display or printer output, no separation



%Xn	Yn	Zn	X0	Y0	Z0	X1	Y1	Z1	DV	dE*ab	dE*76	dE*94	dE*CM	dE*00	dE*85	NR	L*0 a*0 b*0 C*0 h0	L*1 a*1 b*1 C*1 h1	CODE %
%1000*(CIEXYZ & DV) for all colours (a) of experiment, iimp=106, colour difference pairs VA_LV106, xchart3=1, xchart4=0 %																			
Minimum, maximum and average colour difference value																			
STRESS constant F and STRESS value S																			
iai+1 = 106, d_CIELABmina = 12.48, d_CIELABmaxa = 121.09, d_CIELABavea = 40.87																			
iai+1 = 106, CIELAB_Fa = 6.18, CIELAB_STRESSa = 19.1																			
iai+1 = 106, d_CIELCHmina = 12.48, d_CIELCHmaxa = 121.11, d_CIELCHavea = 40.88																			
iai+1 = 106, CIELCHFa = 6.18, CIELCHSTRESSa = 19.11																			
iai+1 = 106, d_C94LCHmina = 4.64, d_C94LCHmaxa = 72.88, d_C94LCHavea = 23.23																			
iai+1 = 106, C94LCHFa = 3.48, C94LCHSTRESSa = 23.93																			
iai+1 = 106, d_CMCLCHmina = 5.46, d_CMCLCHmaxa = 72.5, d_CMCLCHavea = 25.09																			
iai+1 = 106, CMCLCHFa = 3.74, CMCLCHSTRESSa = 22.38																			
iai+1 = 106, d_C00LCHmina = 4.1, d_C00LCHmaxa = 73.48, d_C00LCHavea = 22.51																			
iai+1 = 106, C00LCHFa = 3.38, C00LCHSTRESSa = 23.67																			
iai+1 = 106, d_C85LCHmina = 18.94, d_C85LCHmaxa = 583.87, d_C85LCHavea = 178.13																			
iai+1 = 106, C85LCHFa = 26.66, C85LCHSTRESSa = 23.98																			

see similar files: <http://130.149.60.45/~farbmetrik/YE61/YE61L0NP.PDF> / .PS
technical information: <http://www.ps.bam.de> or <http://130.149.60.45/~farbmetrik>

TUB registration: 20140801-YE61/YE61L0NP.PDF /.PS TUB material: code=rh4ta
application for measurement of display or printer output, no separation

see similar files: http://130.149.60.45/~farbmetrik/YE61/YE61L0NP.PDF /PS
technical information: http://www.ps.bam.de or http://130.149.60.45/~farbmetrik

Table with columns: %L*0, a*0, b*0, C*ab0, hab0, L*1, a*1, b*1, C*ab1, hab1, DV, dE*ab, dE*94, dE*CM, dE*00, dE*85, NR, L*0, a*0, b*0, C*0, h0, L*1, a*1, b*1, C*1, h1, CODE %

TUB registration: 20140801-YE61/YE61L0NP.PDF /PS
application for measurement of display or printer output, no separation
TUB material: code=rh4ta

see similar files: http://130.149.60.45/~farbmetrik/YE61/YE61.HTM
technical information: http://www.ps.bam.de or http://130.149.60.45/~farbmetrik

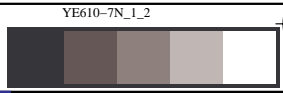
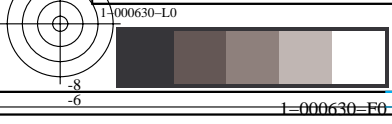
Table with columns: %L*0, a*0, b*0, C*ab0, hab0, L*1, a*1, b*1, C*ab1, hab1, DV, dE*ab, dE*94, dE*CM, dE*00, dE*85, NR, L*0, a*0, b*0, C*0, h0, L*1, a*1, b*1, C*1, h1, CODE %

TUB registration: 20140801-YE61/YE61L0NP.PDF /PS
application for measurement of display or printer output, no separation
TUB material: code=rh4ta

%L*0	a*0	b*0	C*ab0	hab0	L*1	a*1	b*1	C*ab1	hab1	DV	dE*ab	dE*94	dE*CM	dE*00	dE*85	NR	L*0	a*0	b*0	C*0	h0	L*1	a*1	b*1	C*1	h1	CODE %
%CIELAB data for all colour (a) of experiment, iimp=106, colour difference pairs VA_LV106, xchart3=1, xchart4=0 %																											
48.02	70.32	23.53	74.15	18.49	47.69	75.03	-5.67	75.25	355.6	4.51	29.58	14.0	12.78	14.4	107.1861000101	48	70	23	74	18	48	75	-5	75	355	(Y-Yn) %	
48.02	70.32	23.53	74.15	18.49	47.96	65.36	53.14	84.24	39.1	3.47	30.03	13.59	17.21	14.47	46.29	61000102	48	70	23	74	18	48	65	53	84	39	(Yn-YN) %
69.05	27.5	75.76	80.6	70.05	47.96	65.36	53.14	84.24	39.1	7.8	48.88	29.0	42.23	31.1	209.8261000103	69	27	75	80	70	48	65	53	84	39	(YN-Ny) %	
69.05	27.5	75.76	80.6	70.05	88.88	-7.73	98.83	99.13	94.4	9.14	46.54	26.5	26.45	25.57	162.2161000104	69	27	75	80	70	89	-7	98	99	94	(Ny-N) %	
69.98	-37.76	67.42	77.27	119.25	88.89	-7.77	98.43	98.74	94.5	6.78	47.1	26.09	23.03	22.6	149.8961000105	70	-37	67	77	119	89	-7	98	98	94	(L-Ln) %	
69.98	-37.76	67.42	77.27	119.25	52.76	-62.93	39.35	74.22	147.9	8.68	41.44	24.49	21.68	21.14	158.3461000106	70	-37	67	77	119	53	-62	39	74	147	(Ln-LN) %	

see similar files: http://130.149.60.45/~farbmetrik/YE61/YE61.HTM
 technical information: http://www.ps.bam.de or http://130.149.60.45/~farbmetrik

TUB registration: 20140801-YE61/YE61L0NP.PDF /.PS TUB material: code=rha4ta
 application for measurement of display or printer output, no separation



```
%L*0 a*0 b*0 C*ab0 hab0 L*1 a*1 b*1 C*ab1 hab1 DV dE*ab dE*94 dE*CM dE*00 dE*85 NR L*0 a*0 b*0 C*0 h0 L*1 a*1 b*1 C*1 h1 CODE %  
%CIELAB data for all colour (a) of experiment, iimp=106, colour difference pairs VA_LV106, xchart3=1, xchart4=0 %  
Minimum, maximum and average colour difference value  
STRESS constant F and STRESS value S  
iai+1 = 106, d_CIELABmina = 12.48, d_CIELABmaxa = 121.09, d_CIELABavea = 40.87  
iai+1 = 106, CIELAB_Fa = 6.18, CIELAB_STRESSa = 19.1  
  
iai+1 = 106, d_CIELCHmina = 12.48, d_CIELCHmaxa = 121.11, d_CIELCHavea = 40.88  
iai+1 = 106, CIELCHFa = 6.18, CIELCHSTRESSa = 19.11  
  
iai+1 = 106, d_C94LCHmina = 4.64, d_C94LCHmaxa = 72.88, d_C94LCHavea = 23.23  
iai+1 = 106, C94LCHFa = 3.48, C94LCHSTRESSa = 23.93  
  
iai+1 = 106, d_CMCLCHmina = 5.46, d_CMCLCHmaxa = 72.5, d_CMCLCHavea = 25.09  
iai+1 = 106, CMCLCHFa = 3.74, CMCLCHSTRESSa = 22.38  
  
iai+1 = 106, d_C00LCHmina = 4.1, d_C00LCHmaxa = 73.48, d_C00LCHavea = 22.51  
iai+1 = 106, C00LCHFa = 3.38, C00LCHSTRESSa = 23.67  
  
iai+1 = 106, d_C85LCHmina = 18.94, d_C85LCHmaxa = 583.87, d_C85LCHavea = 178.13  
iai+1 = 106, C85LCHFa = 26.66, C85LCHSTRESSa = 23.98
```

see similar files: <http://130.149.60.45/~farbmetrik/YE61/YE61.HTM>
technical information: <http://www.ps.bam.de> or <http://130.149.60.45/~farbmetrik>

TUB registration: 20140801-YE61/YE61L0NP.PDF /.PS TUB material: code=rha4ta
application for measurement of display or printer output, no separation