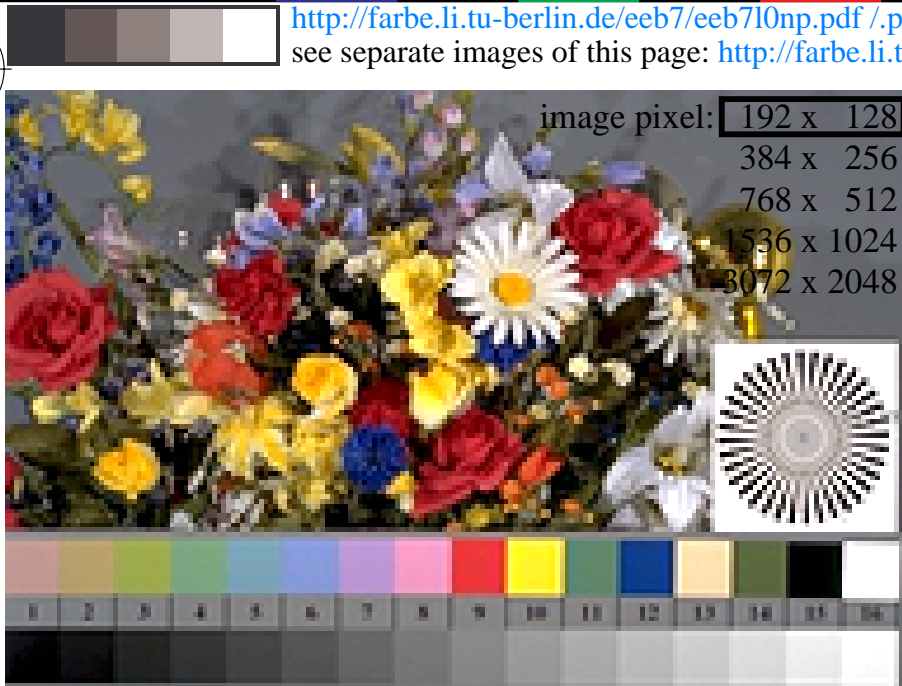


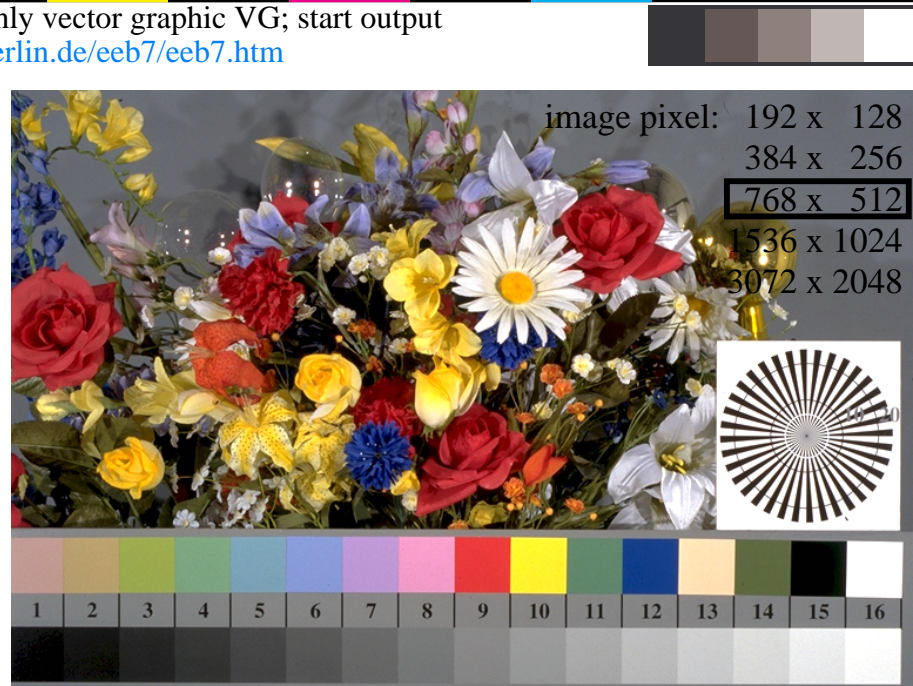
<http://farbe.li.tu-berlin.de/eeb7/eeb710np.pdf> / .ps; only vector graphic VG; start output
see separate images of this page: <http://farbe.li.tu-berlin.de/eeb7/eeb7.htm>

see similar files of the whole serie: <http://farbe.li.tu-berlin.de/eebs.htm>
technical information: <http://farbe.li.tu-berlin.de> or <http://color.li.tu-berlin.de>

TUB registration: 20230801-eeb7/eeb710np.pdf / .ps
application for evaluation and measurement of display or print output
TUB material: code=thata



eeb70-3n, Picture B1: Flower motif, 14 CIE-test colours and 16 grey steps (sf); PS operators *settransfer*, 3 *colorimage*



eeb71-3n, Picture B1: Flower motif, 14 CIE-test colours and 16 grey steps (sf); PS operators *settransfer*, 3 *colorimage*



eeb70-7n, Picture B1: Flower motif, 14 CIE-test colours and 16 grey steps (sf); PS operators *settransfer*, 3 *colorimage*



eeb71-7n, Picture B1: Flower motif, 14 CIE-test colours and 16 grey steps (sf); PS operators *settransfer*, 3 *colorimage*

TUB-test chart eeb7; Colour-image reproduction, change of image resolutions, contrast step C_{yp8}
ISO/IEC 15775 image, slide film (sf, +0,5 stop), PS operators: *settransfer*, 3 *colorimage* (rgb)