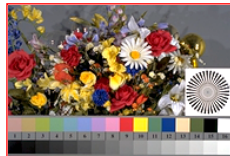


<http://farbe.li.tu-berlin.de/eec6/eec610n1.txt> /ps; only vector graphic VG; start output  
see separate images of this page: <http://farbe.li.tu-berlin.de/eec6/eec6.htm>

see similar files of the whole series: <http://farbe.li.tu-berlin.de/eec6/eec6.htm>  
technical information: <http://farbe.li.tu-berlin.de> or <http://color.li.tu-berlin.de>



TUB-test chart eec6; Best visual exposure of original test scene according to ISO/IEC 15775:2022  
Slide film (sf), +0,5 stop, 192 x 128 pixel,  $0,5 < \gamma < 2$ , quality:  $g^* = 90$ , red frames:  $\gamma = 1$  &  $0,77$

TUB registration: 20230801-eec6/eec610n1.txt /ps  
application for evaluation and measurement of display or print output

TUB material: code=ha4ta