

<http://farbe.li.tu-berlin.de/eec6/eec610np.pdf> /.ps; only vector graphic VG; start output see separate images of this page: <http://farbe.li.tu-berlin.de/eec6/eec6.htm>



ec60-1a, eeb60-7a, ANC40-6N; sf: +0,5 stop, 192 x 128 pixel, gamma = 0,47



ec60-2h, eeb60-7a, ANC40-6N; sf: +0,5 stop, 192 x 128 pixel, gamma = 0,55



ec61-1h, eeb60-7a, ANC40-6N; sf: +0,5 stop, 192 x 128 pixel, gamma = 1,00



ec61-2h, eeb60-7a, ANC40-6N; sf: +0,5 stop, 192 x 128 pixel, gamma = 1,08



ec60-3a, eeb60-7a, ANC40-6N; sf: +0,5 stop, 192 x 128 pixel, gamma = 0,62



ec60-4a, eeb60-7a, ANC40-6N; sf: +0,5 stop, 192 x 128 pixel, gamma = 0,70



ec61-3a, eeb60-7a, ANC40-6N; sf: +0,5 stop, 192 x 128 pixel, gamma = 1,17



ec61-4a, eeb60-7a, ANC40-6N; sf: +0,5 stop, 192 x 128 pixel, gamma = 1,29



ec60-5a, eeb60-7a, ANC40-6N; sf: +0,5 stop, 192 x 128 pixel, gamma = 0,77



ec60-6a, eeb60-7a, ANC40-6N; sf: +0,5 stop, 192 x 128 pixel, gamma = 0,84



ec61-5a, eeb60-7a, ANC40-6N; sf: +0,5 stop, 192 x 128 pixel, gamma = 1,42



ec61-6a, eeb60-7a, ANC40-6N; sf: +0,5 stop, 192 x 128 pixel, gamma = 1,60



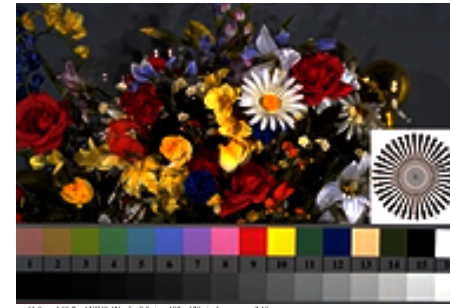
ec60-7a, eeb60-7a, ANC40-6N; sf: +0,5 stop, 192 x 128 pixel, gamma = 0,92



ec60-8a, eeb60-7a, ANC40-6N; sf: +0,5 stop, 192 x 128 pixel, gamma = 1,00



ec61-7a, eeb60-7a, ANC40-6N; sf: +0,5 stop, 192 x 128 pixel, gamma = 1,81



ec61-8a, eeb60-7a, ANC40-6N; sf: +0,5 stop, 192 x 128 pixel, gamma = 2,10

TUB-test chart eec6; Best visual exposure of original test scene according to ISO/IEC 15775:2022 Slide film (sf), +0,5 stop, 192 x 128 pixel, $0,5 \leq \gamma_r \leq 2$, quality: $g^* = 90$, red frames: $\gamma_r = 1$ & $0,77$

see similar files of the whole serie: <http://farbe.li.tu-berlin.de/eecs.htm> technical information: <http://farbe.li.tu-berlin.de> OR <http://color.li.tu-berlin.de>

TUB registration: 20230801-eec6/eec610np.pdf /.ps application for evaluation and measurement of display or print output

TUB material: code=rh4ta