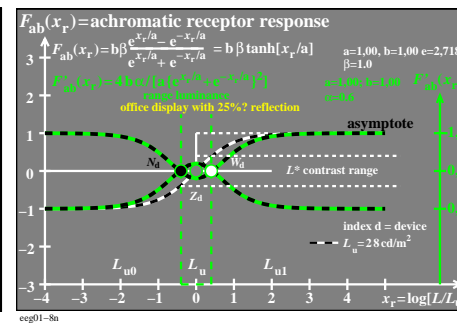
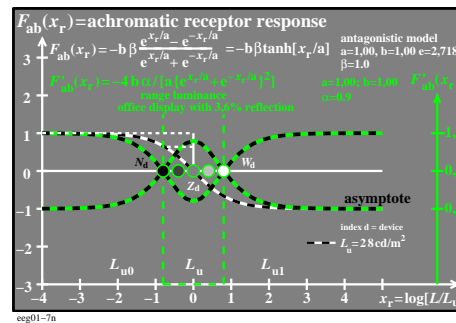
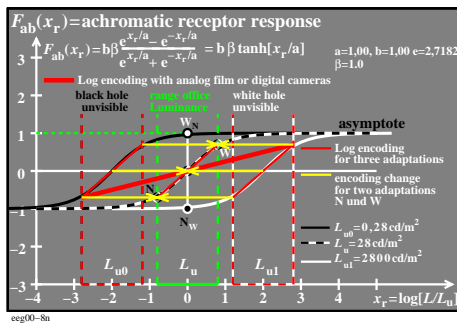
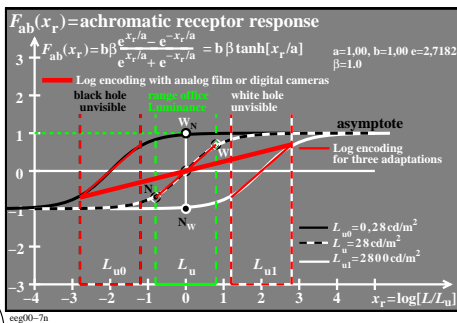
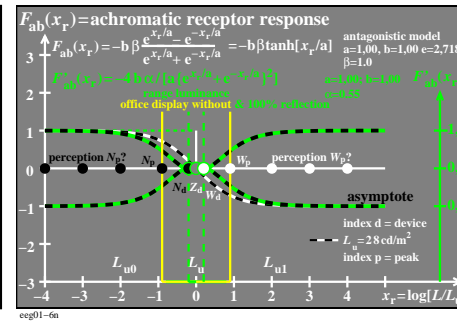
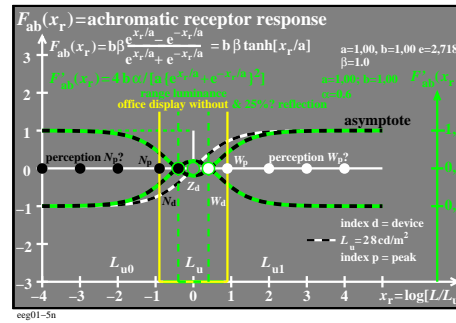
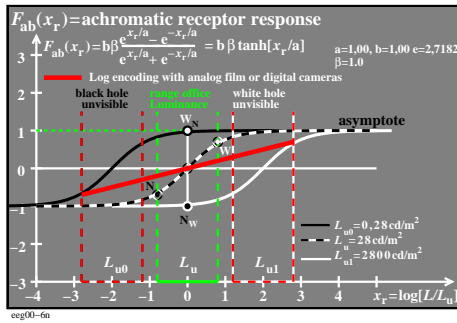
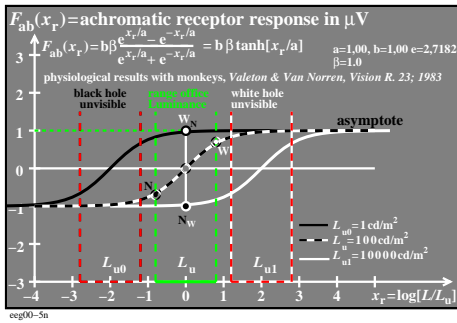
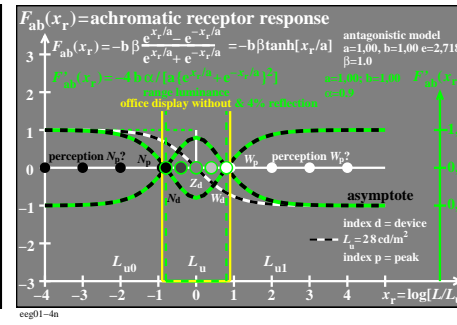
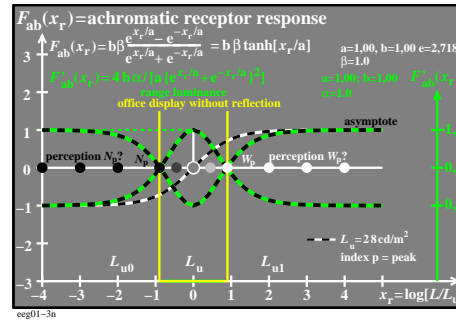
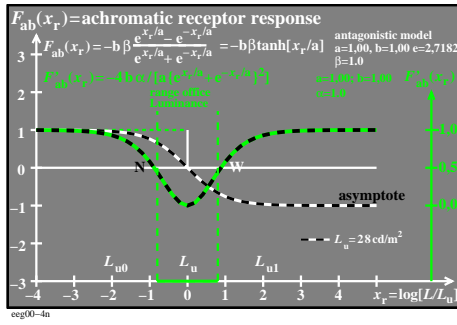
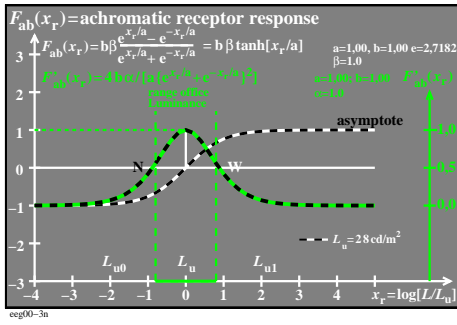
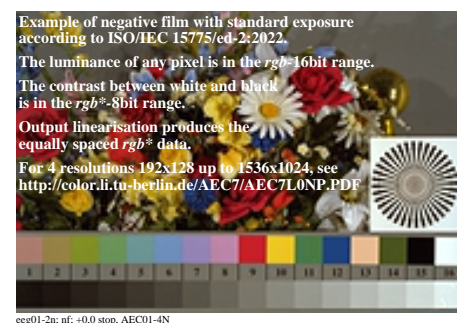
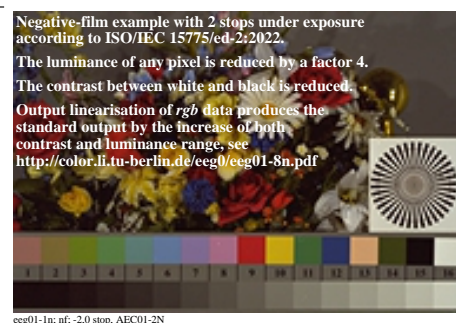
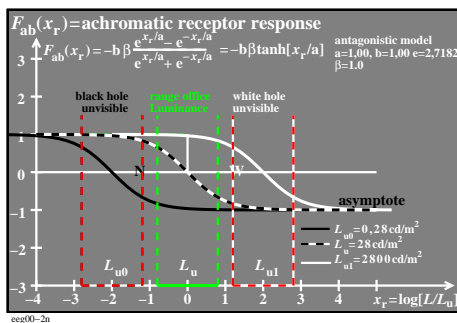
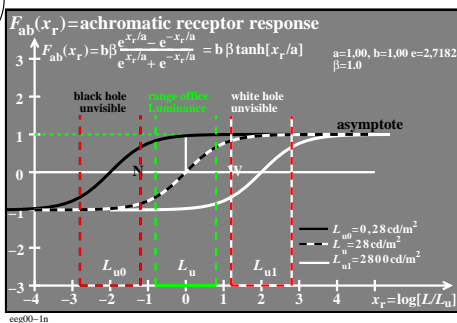


<http://farbe.li.tu-berlin.de/eeg0/eeg010na.txt> / .ps; only vector graphic VG; start output
 see separate images of this page: <http://farbe.li.tu-berlin.de/eeg0/eeg0.htm>

see similar files of the whole serie: <http://farbe.li.tu-berlin.de/eegs.htm>
 technical information: <http://farbe.li.tu-berlin.de> or <http://color.li.tu-berlin.de>

TUB registration: 20230701-eeg0/eeg010na.txt / .ps
 application for evaluation and measurement of display or print output
 TUB material: code=rh4t4



TUB-test chart eeg0; Analog and digital encoding and decoding of luminance LL/L_u
 Antagonistic receptor functions F_{ab} and derivation F'_{ab} for lightness L^* and discrimination ΔL^*