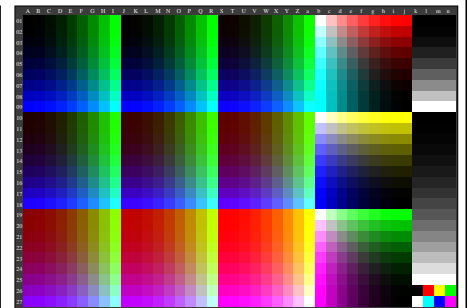
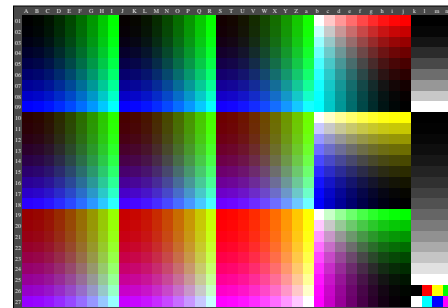
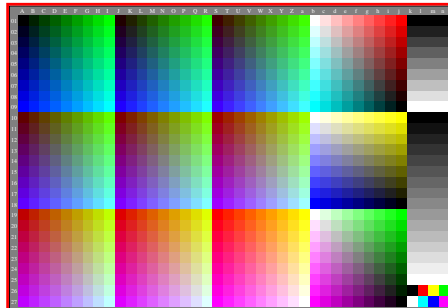
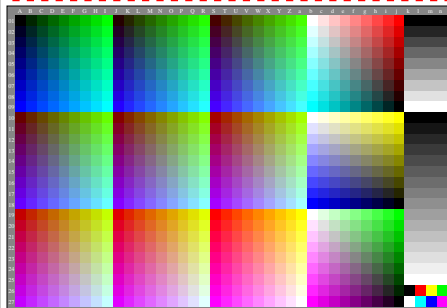
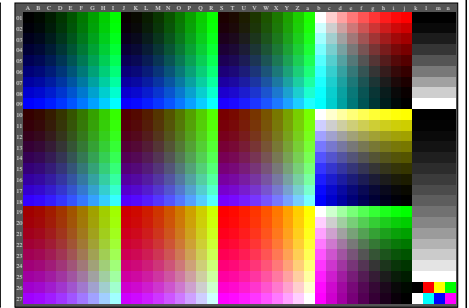
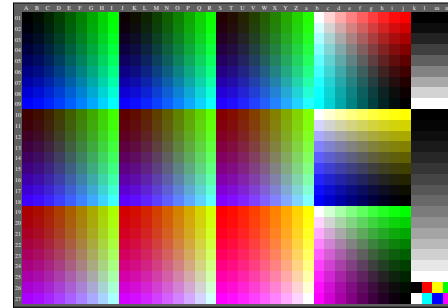
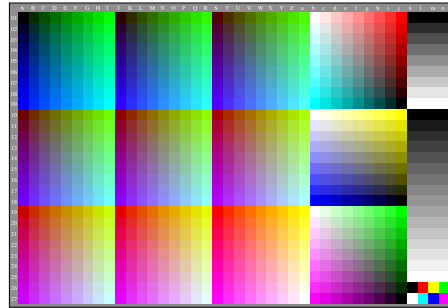
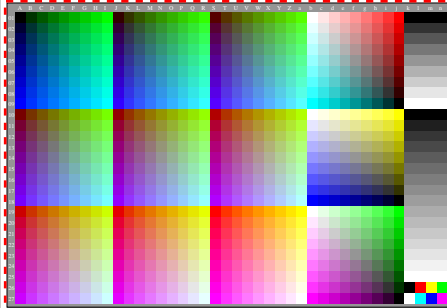
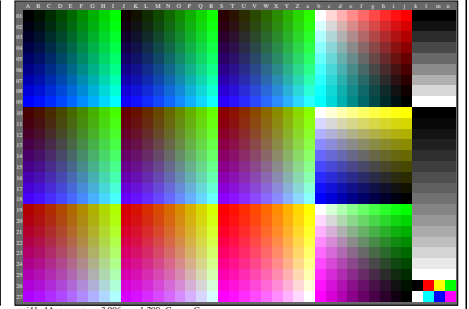
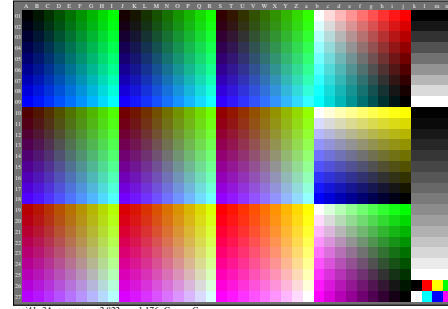
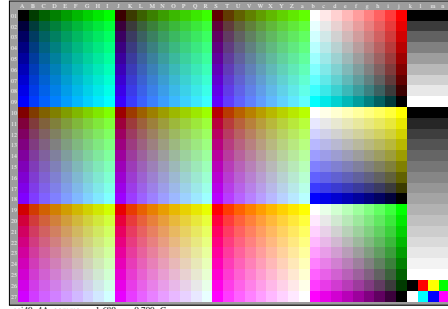
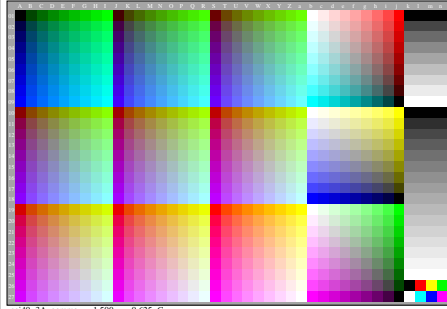
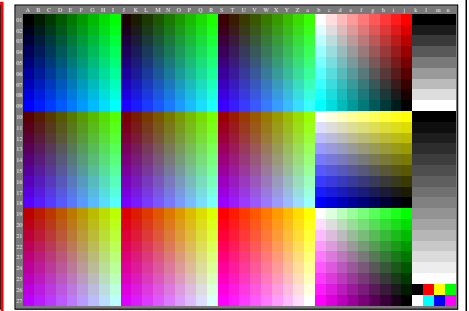
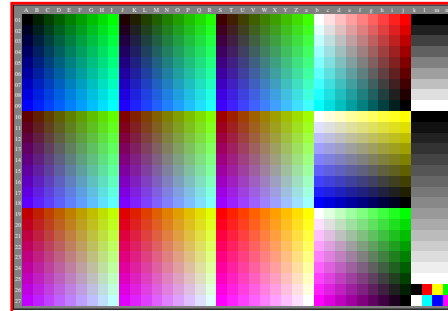
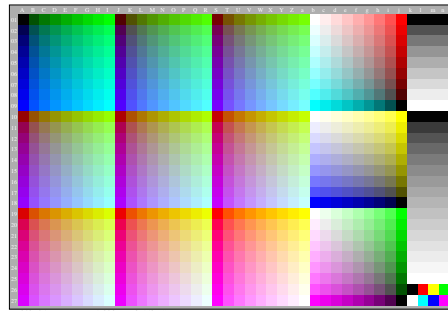
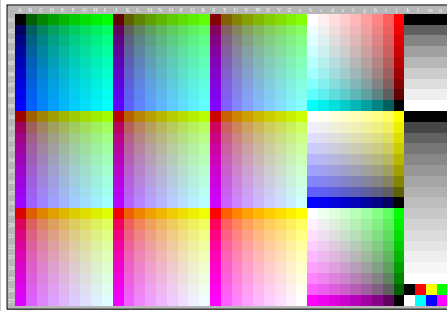


<http://farbe.li.tu-berlin.de/ei4/ei4l0np.pdf> / .ps; only vector graphic VG; start output
see separate images of this page: <http://farbe.li.tu-berlin.de/ei4/ei4.htm>

see similar files of the whole serie: <http://farbe.li.tu-berlin.de/eis.htm>
technical information: <http://farbe.li.tu-berlin.de> or <http://color.li.tu-berlin.de>

TUB registration: 20230701-ei4/ei4l0np.pdf / ps
application for evaluation and measurement of display or print output

TUB material: code=rh4ta



eei40-7n

TUB-test chart ei4; Test charts with 9 step colour series for ergonomic linearized display output
Gamma optimization for 15 ambient display reflections according to ISO 9241-306; 15 different γ_{rel}