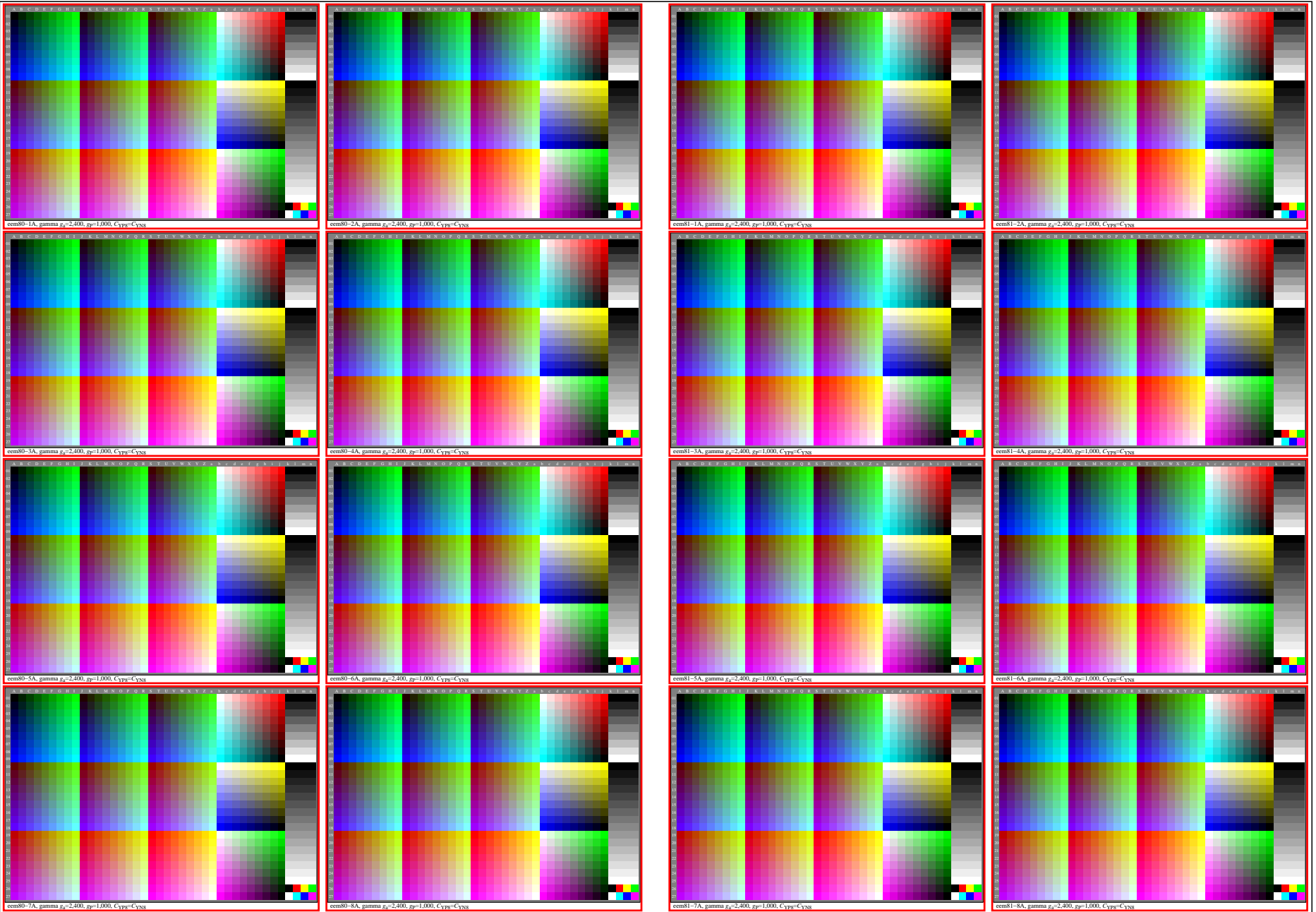


see gamma software and links to ISO-test charts <http://color.li.tu-berlin.de/eem1/eem1l0np.pdf>  
technical information: <http://farbe.li.tu-berlin.de> or <http://color.li.tu-berlin.de>

TUB registration: 20230615-eem8/eem8l0na.txt / .ps  
application for evaluation and measurement of display or print output

TUB material: code=rh4ta



eem80-7n

TUB-test chart eem8; Test charts with 9 step colour series for ergonomic linearized display output

Gamma optimization for 15 ambient display reflections according to ISO 9241-306; 15 equal  $\gamma_{rel}=0,775$