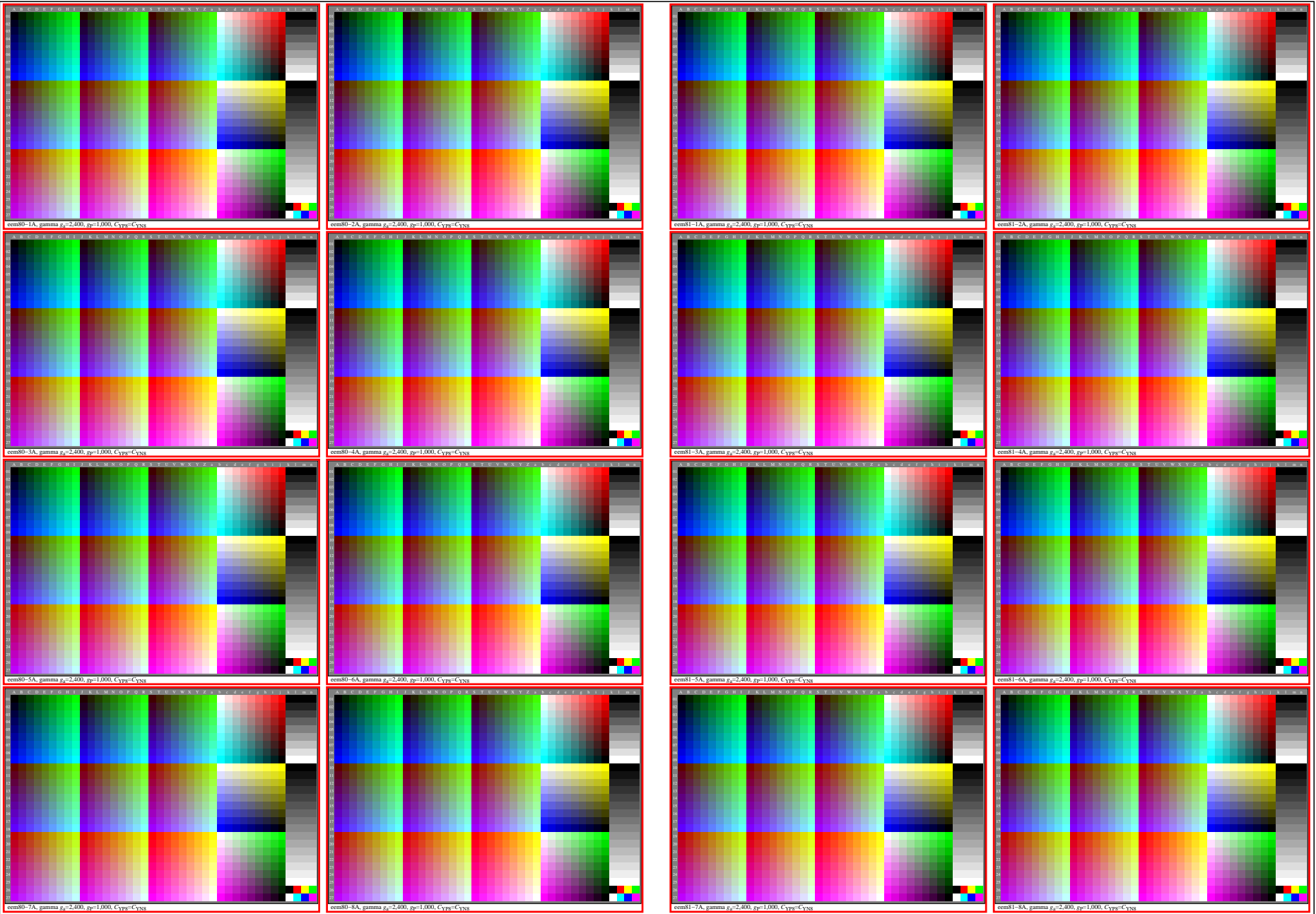


see gamma software and links to ISO-test charts <http://color.li.tu-berlin.de/eem1/eem1l0np.pdf>
technical information: <http://farbe.li.tu-berlin.de> or <http://color.li.tu-berlin.de>

TUB registration: 20230615-eem8/eem8l0np.pdf / .ps
application for evaluation and measurement of display or print output
TUB material: code=rh4ta



eem80-7n