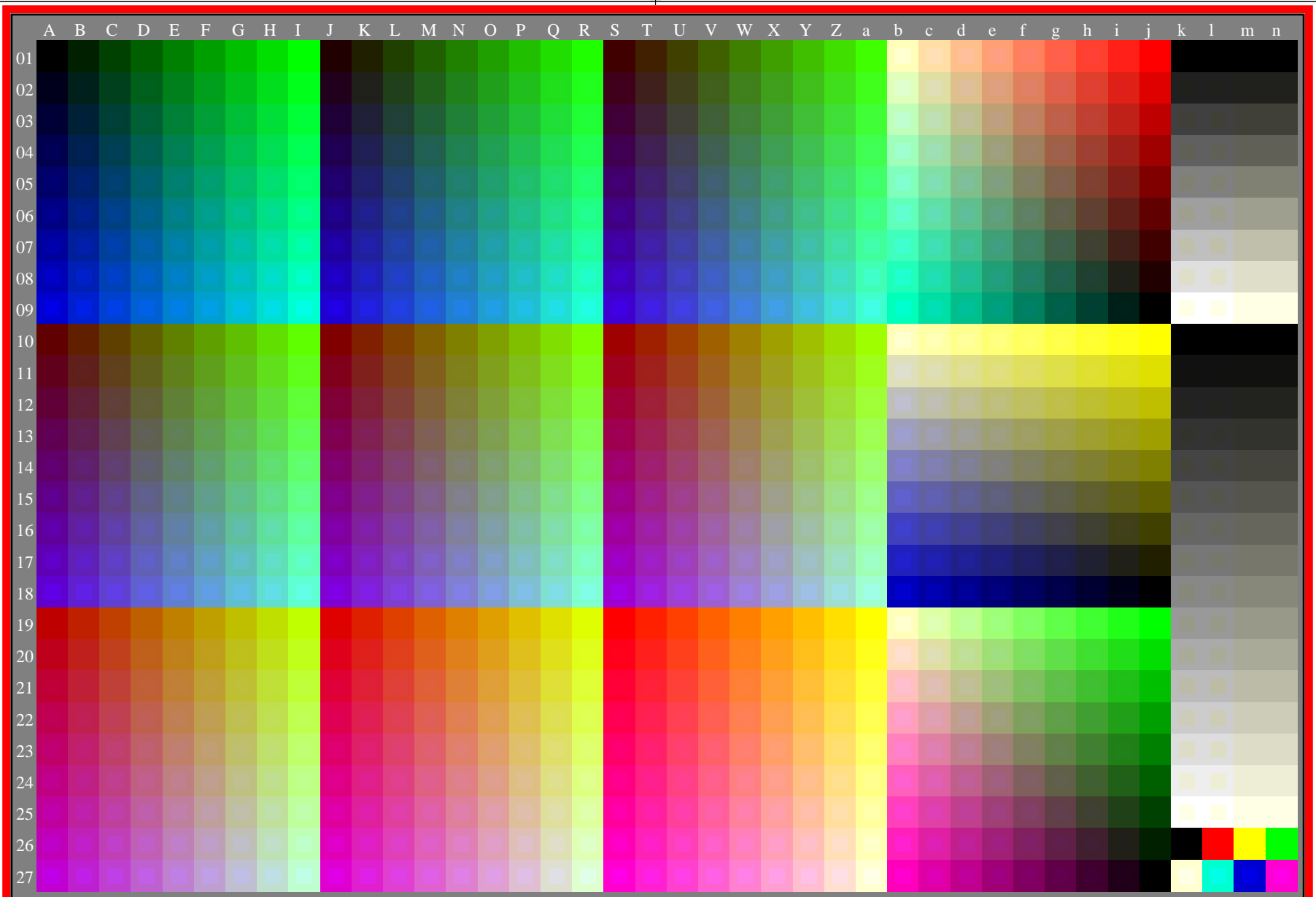


see gamma software and links to ISO-test charts <http://color.li.tu-berlin.de/eem1/eem1I0np.pdf>
technical information: <http://farbe.li.tu-berlin.de> or <http://color.li.tu-berlin.de>

TUB registration: 20230615-eem9/eem9I0np.pdf /.ps
application for evaluation and measurement of display or print output
TUB material: code=rhata4ta



eem90-7n, gamma $g_a=2,400$, $g_p=1,000$, $C_{YP8}=C_{YN8}$, Yellow colour tint