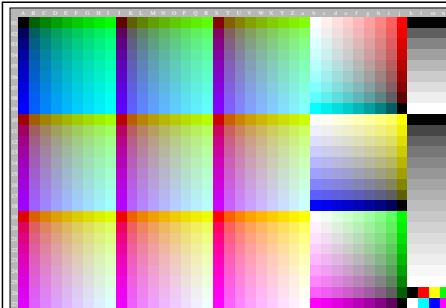
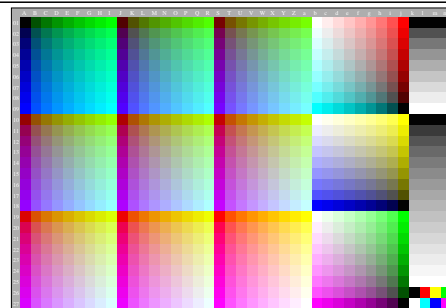


Gammastandardsoftware und Links zu ISO-Prüfvorlagen <http://farbe.li.tu-berlin.de/egm1l0np.pdf>
 Technische Information: <http://farbe.li.tu-berlin.de> oder <http://color.li.tu-berlin.de>

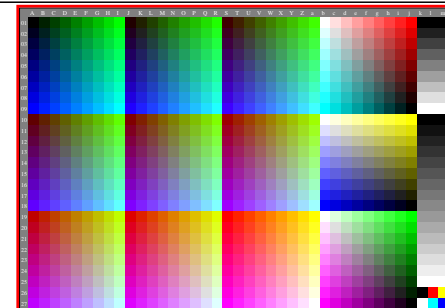
TUB-Registrierung: 20230615-egc4/egc4l0np.pdf / .ps
 Anwendung für Beurteilung und Messung von Display- oder Druck-Ausgabe
 TUB-Material: Code=rh4ta



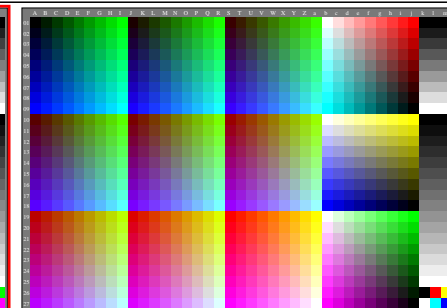
egc40-1A, Gamma $g_r=1,140$, $g_b=0,475$, C_{Yp1}



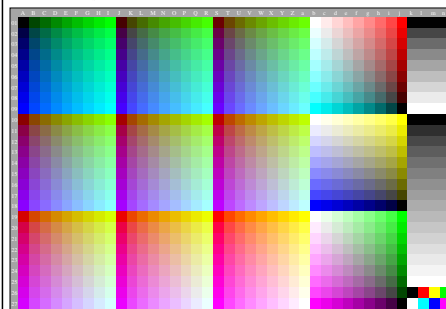
egc40-2A, Gamma $g_r=1,320$, $g_b=0,550$, C_{Yp2}



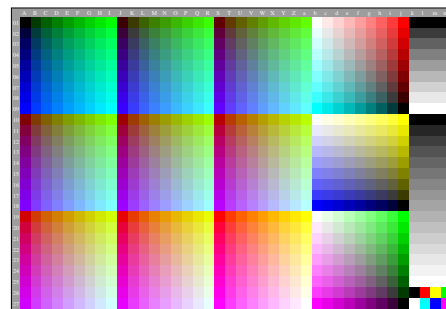
egc41-1A, Gamma $g_r=2,400$, $g_b=1,000$, $C_{Yp0-C_{Ys8}}$



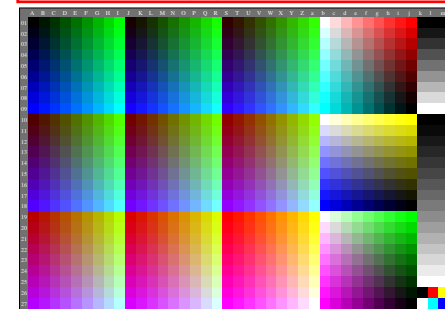
egc41-2A, Gamma $g_r=2,594$, $g_b=1,081$, $C_{Yp0-C_{Ys7}}$



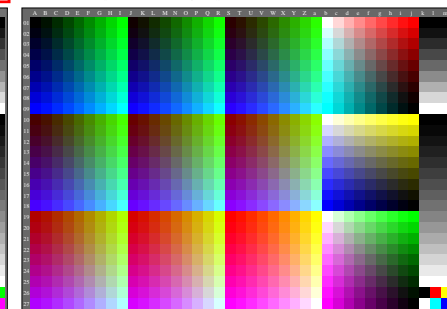
egc40-3A, Gamma $g_r=1,500$, $g_b=0,625$, C_{Yp1}



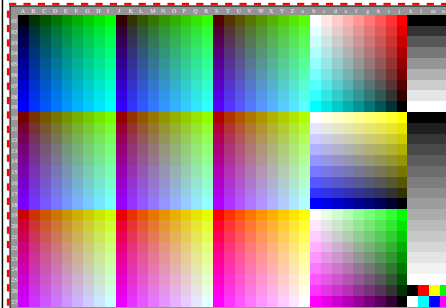
egc40-4A, Gamma $g_r=1,680$, $g_b=0,700$, C_{Yp4}



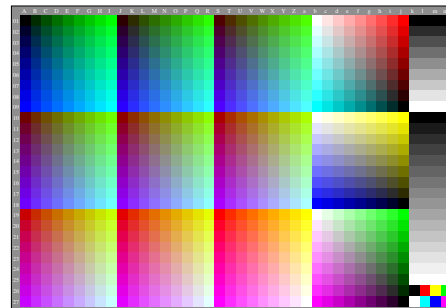
egc41-3A, Gamma $g_r=2,822$, $g_b=1,176$, $C_{Yp10-C_{Ys6}}$



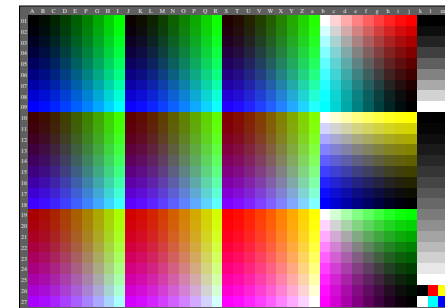
egc41-4A, Gamma $g_r=3,096$, $g_b=1,290$, $C_{Yp11-C_{Ys5}}$



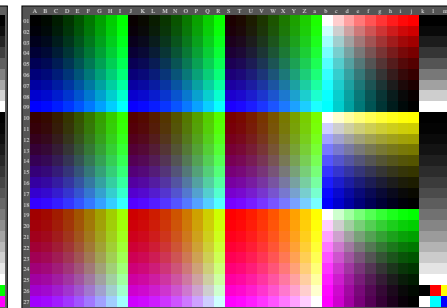
egc40-5A, Gamma $g_r=1,860$, $g_b=0,775$, C_{Yp1}



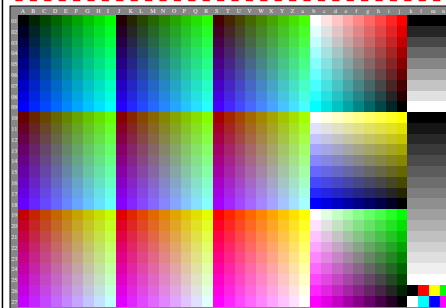
egc40-6A, Gamma $g_r=2,037$, $g_b=0,849$, C_{Yp6}



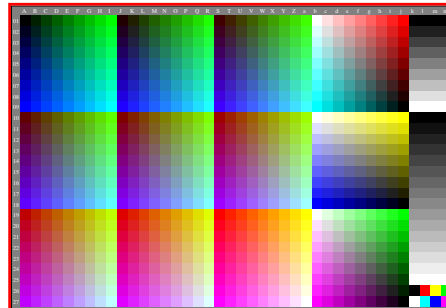
egc41-5A, Gamma $g_r=3,427$, $g_b=1,428$, $C_{Yp12-C_{Ys4}}$



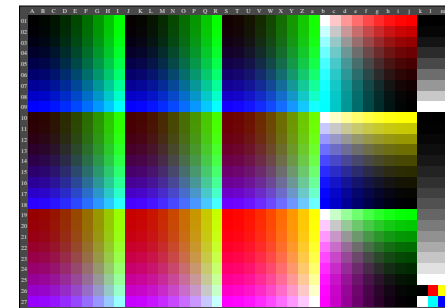
egc41-6A, Gamma $g_r=3,840$, $g_b=1,600$, $C_{Yp13-C_{Ys3}}$



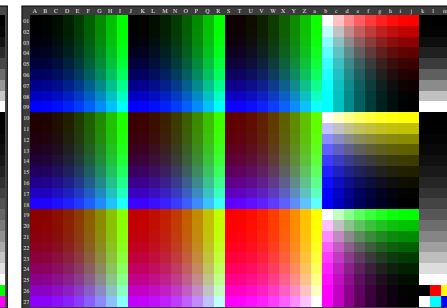
egc40-7A, Gamma $g_r=2,217$, $g_b=0,924$, C_{Yp7}



egc40-8A, Gamma $g_r=2,400$, $g_b=1,000$, $C_{Yp8-C_{Ys2}}$



egc41-7A, Gamma $g_r=4,363$, $g_b=1,818$, $C_{Yp14-C_{Ys2}}$



egc41-8A, Gamma $g_r=5,052$, $g_b=2,105$, $C_{Yp15-C_{Ys1}}$

egc40-7n