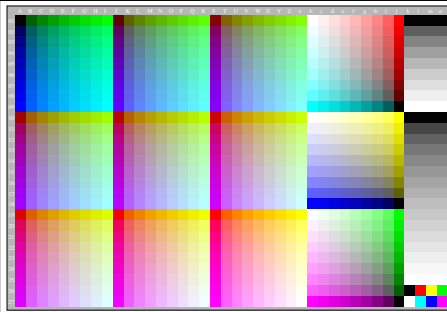


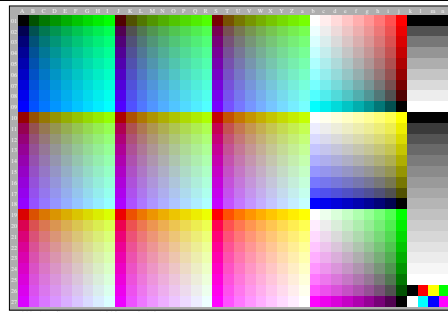
Siehe ähnliche Dateien der ganzen Serie: <http://farbe.li.tu-berlin.de/egis.htm>
 Technische Information: <http://farbe.li.tu-berlin.de> oder <http://color.li.tu-berlin.de>

TUB-Registrierung: 20230701-egi4/egi4l0np.pdf / .ps
 Anwendung für Beurteilung und Messung von Display- oder Druck-Ausgabe

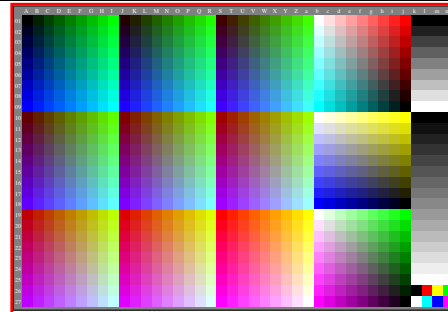
TUB-Material: Code=rh4ta



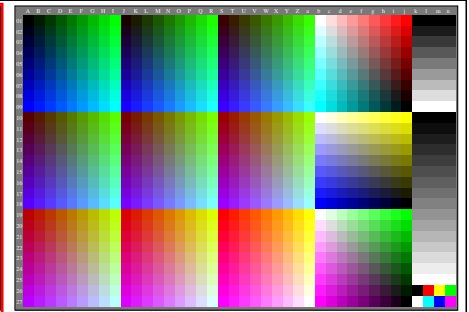
egi40-1A, Gamma $g_r=1.140$, $g_b=0.475$, C_{YPp}



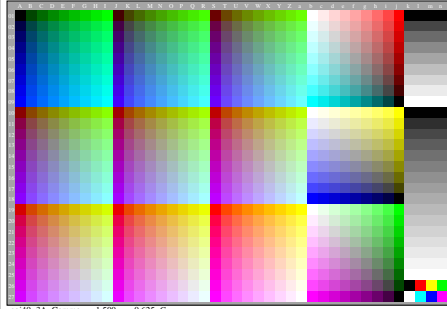
egi40-2A, Gamma $g_r=1.330$, $g_b=0.550$, C_{YPp}



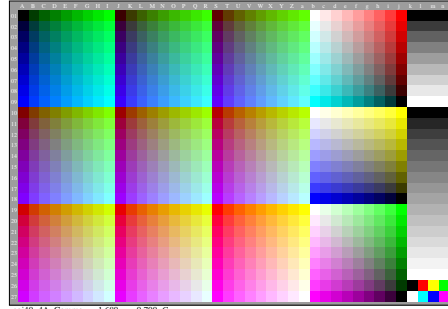
egi41-1A, Gamma $g_r=2.400$, $g_b=1.000$, C_{YPp-C_{YNb}}



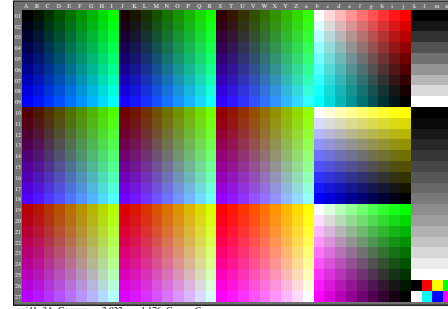
egi41-2A, Gamma $g_r=2.594$, $g_b=1.081$, C_{YPp-C_{YNb}}



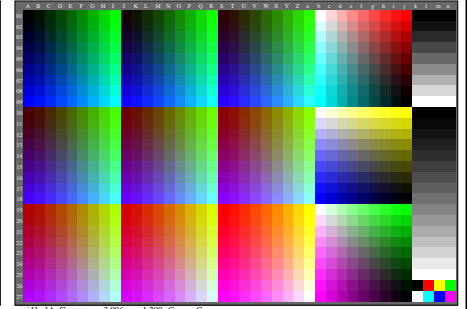
egi40-3A, Gamma $g_r=1.500$, $g_b=0.625$, C_{YPp}



egi40-4A, Gamma $g_r=1.680$, $g_b=0.700$, C_{YPp}



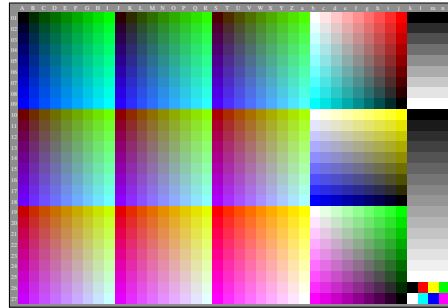
egi41-3A, Gamma $g_r=2.822$, $g_b=1.116$, C_{YPp-C_{YNb}}



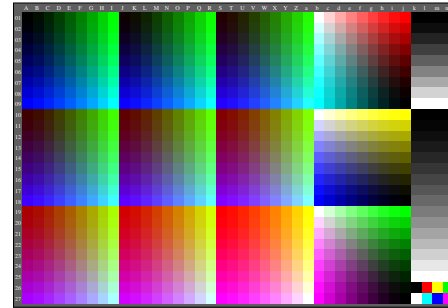
egi41-4A, Gamma $g_r=3.096$, $g_b=1.290$, C_{YPp-C_{YNb}}



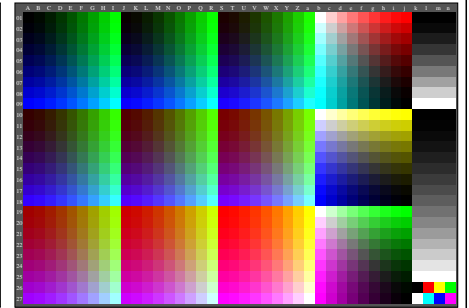
egi40-5A, Gamma $g_r=1.860$, $g_b=0.775$, C_{YPp}



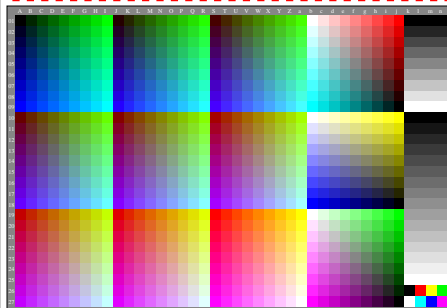
egi40-6A, Gamma $g_r=2.037$, $g_b=0.849$, C_{YPp}



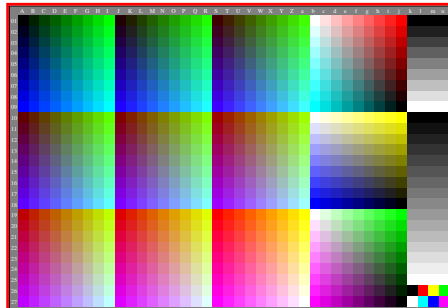
egi41-5A, Gamma $g_r=3.427$, $g_b=1.428$, C_{YPp-C_{YNb}}



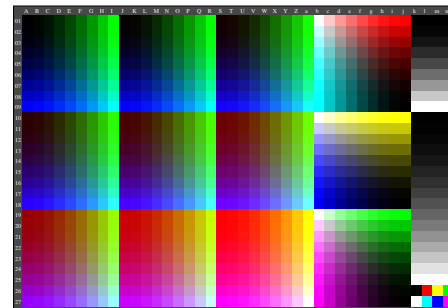
egi41-6A, Gamma $g_r=3.840$, $g_b=1.600$, C_{YPp-C_{YNb}}



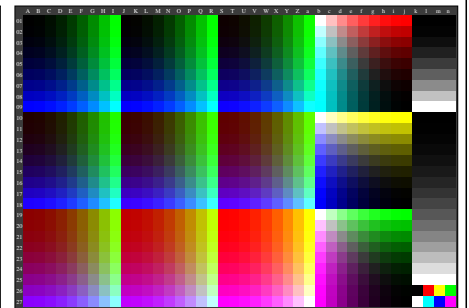
egi40-7A, Gamma $g_r=2.217$, $g_b=0.924$, C_{YPp}



egi40-8A, Gamma $g_r=2.400$, $g_b=1.000$, C_{YPp-C_{YNb}}



egi41-7A, Gamma $g_r=4.363$, $g_b=1.818$, C_{YPp-C_{YNb}}



egi41-8A, Gamma $g_r=5.052$, $g_b=2.105$, C_{YPp-C_{YNb}}

egi40-7n