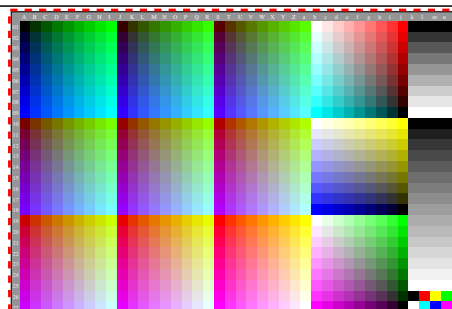
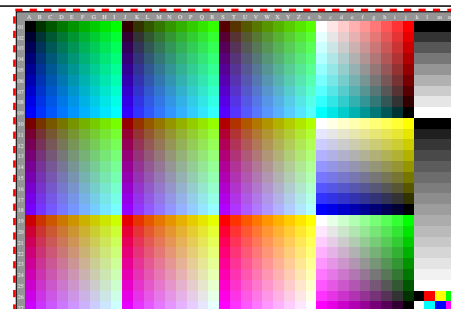


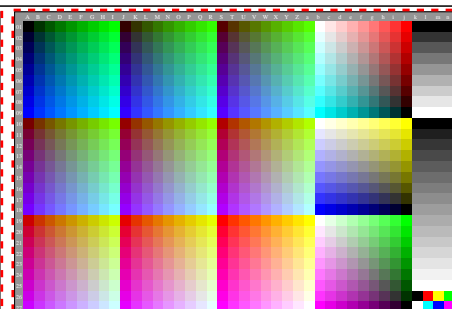
gg80-1A, Gamma_{gg}=1.860, γ =0.775, Cyps



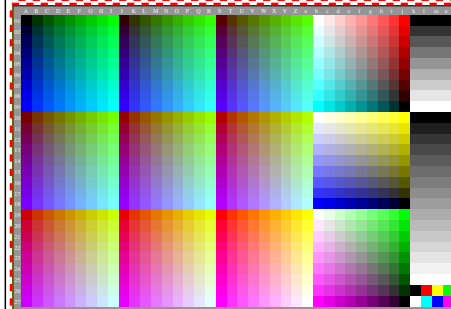
gg80-2A, Gamma_{gg}=1.860, γ =0.775, Cyps



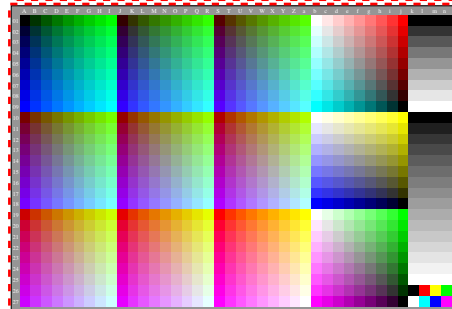
gg81-1A, Gamma_{gg}=1.860, γ =0.775, Cyps



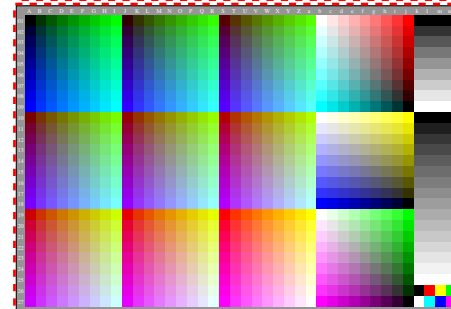
gg81-5A, Gamma_{gg}=1.860, γ =0.775, Cyps



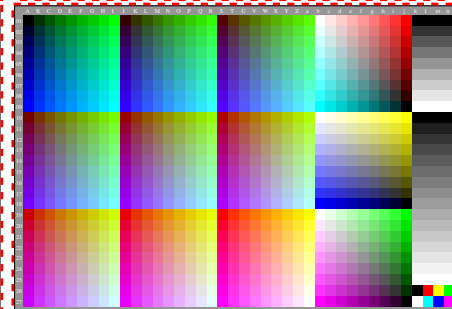
gg80-3A, Gamma_{gg}=1.860, γ =0.775, Cyps



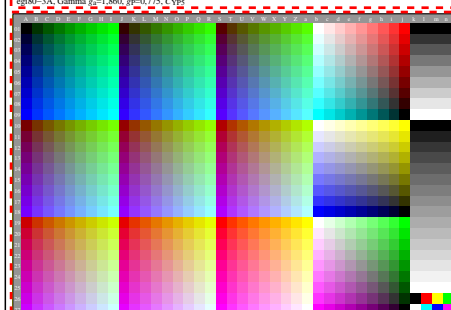
gg80-4A, Gamma_{gg}=1.860, γ =0.775, Cyps



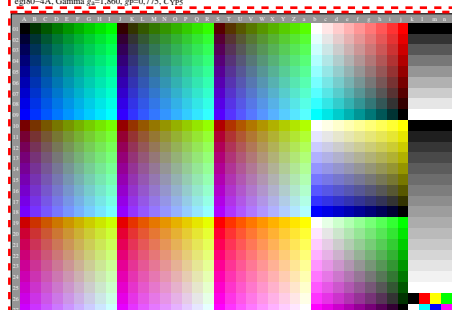
gg81-3A, Gamma_{gg}=1.860, γ =0.775, Cyps



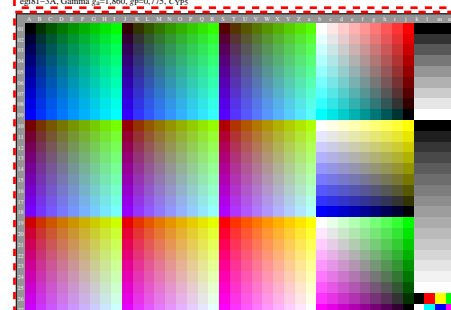
gg81-4A, Gamma_{gg}=1.860, γ =0.775, Cyps



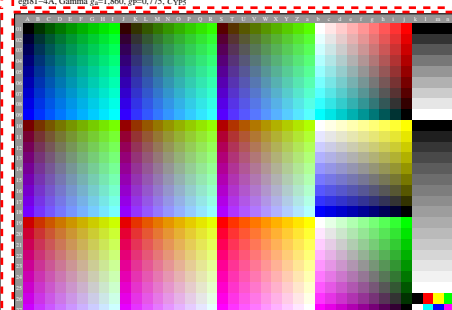
gg80-5A, Gamma_{gg}=1.860, γ =0.775, Cyps



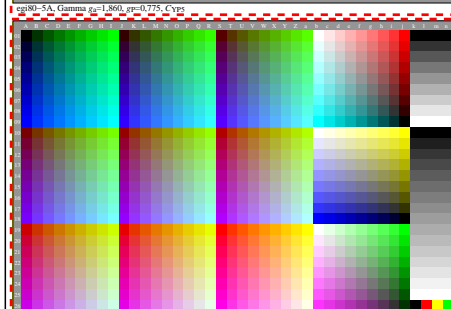
gg80-6A, Gamma_{gg}=1.860, γ =0.775, Cyps



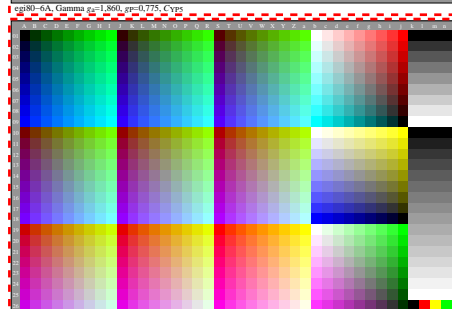
gg81-5A, Gamma_{gg}=1.860, γ =0.775, Cyps



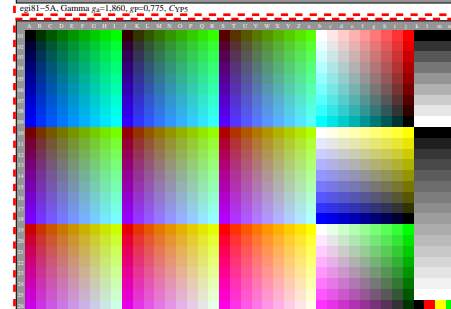
gg81-6A, Gamma_{gg}=1.860, γ =0.775, Cyps



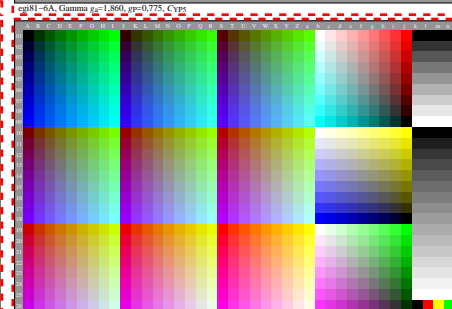
gg80-7A, Gamma_{gg}=1.860, γ =0.775, Cyps



gg80-8A, Gamma_{gg}=1.860, γ =0.775, Cyps



gg81-7A, Gamma_{gg}=1.860, γ =0.775, Cyps



gg81-8A, Gamma_{gg}=1.860, γ =0.775, Cyps