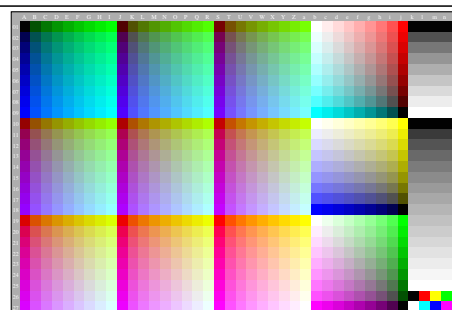
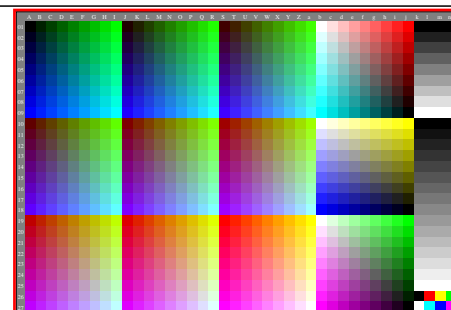


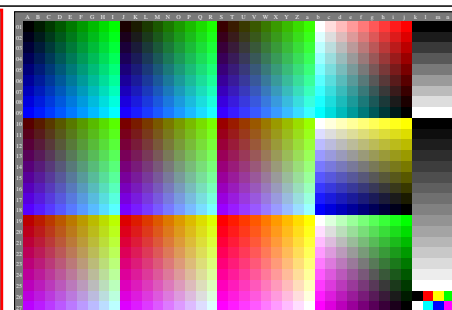
egm40-1A, Gamma $g_1=1.140$, $g_2=0.475$, C_{Yp1}



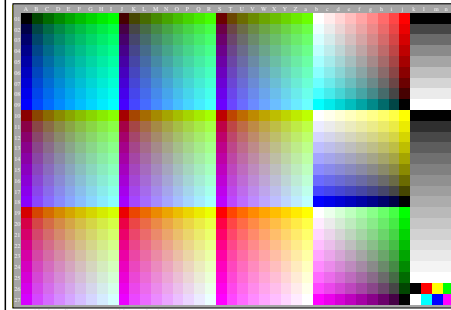
egm40-2A, Gamma $g_1=1.320$, $g_2=0.550$, C_{Yp2}



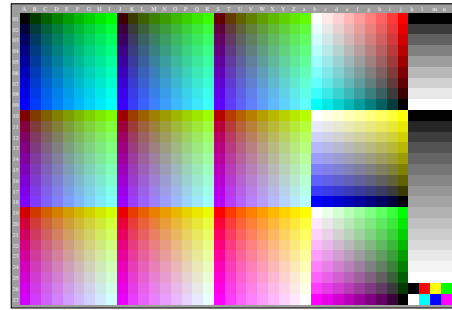
egm11-1A, Gamma $g_1=2.400$, $g_2=1.000$, C_{Yp1}-C_{Ys2}



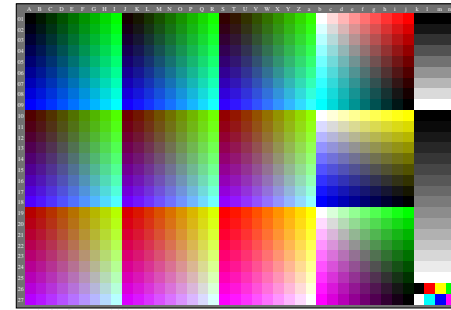
egm11-2A, Gamma $g_1=2.594$, $g_2=1.081$, C_{Yp1}-C_{Ys2}



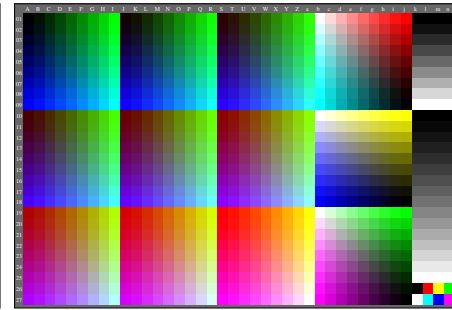
egm40-3A, Gamma $g_1=1.500$, $g_2=0.625$, C_{Yp1}



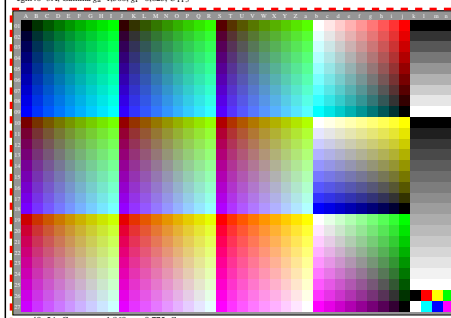
egm40-4A, Gamma $g_1=1.680$, $g_2=0.700$, C_{Yp1}



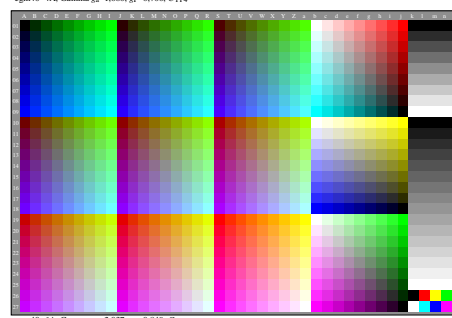
egm11-3A, Gamma $g_1=2.822$, $g_2=1.176$, C_{Yp1}-C_{Ys2}



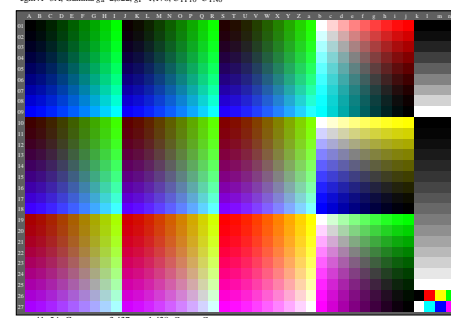
egm11-4A, Gamma $g_1=3.096$, $g_2=1.290$, C_{Yp1}-C_{Ys2}



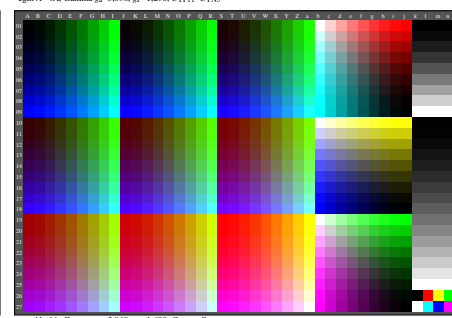
egm40-5A, Gamma $g_1=1.860$, $g_2=0.775$, C_{Yp1}



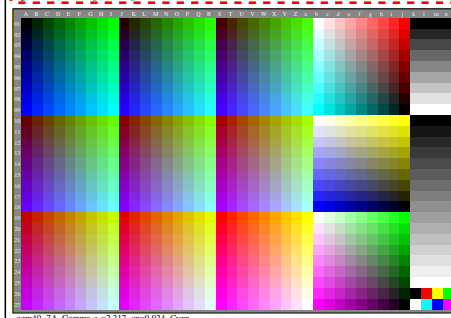
egm40-6A, Gamma $g_1=2.037$, $g_2=0.849$, C_{Yp1}



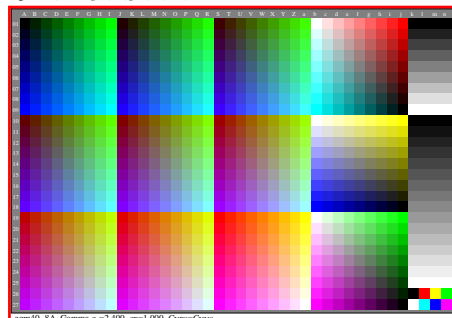
egm11-5A, Gamma $g_1=3.423$, $g_2=1.428$, C_{Yp1}-C_{Ys2}



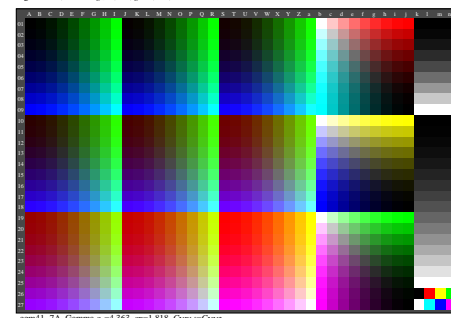
egm11-6A, Gamma $g_1=3.840$, $g_2=1.600$, C_{Yp1}-C_{Ys2}



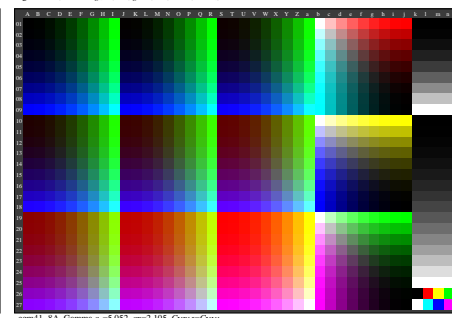
egm40-7A, Gamma $g_1=2.217$, $g_2=0.924$, C_{Yp1}



egm40-8A, Gamma $g_1=2.400$, $g_2=1.000$, C_{Yp1}-C_{Ys2}



egm11-7A, Gamma $g_1=3.363$, $g_2=1.818$, C_{Yp1}-C_{Ys2}



egm11-8A, Gamma $g_1=5.052$, $g_2=2.105$, C_{Yp1}-C_{Ys2}