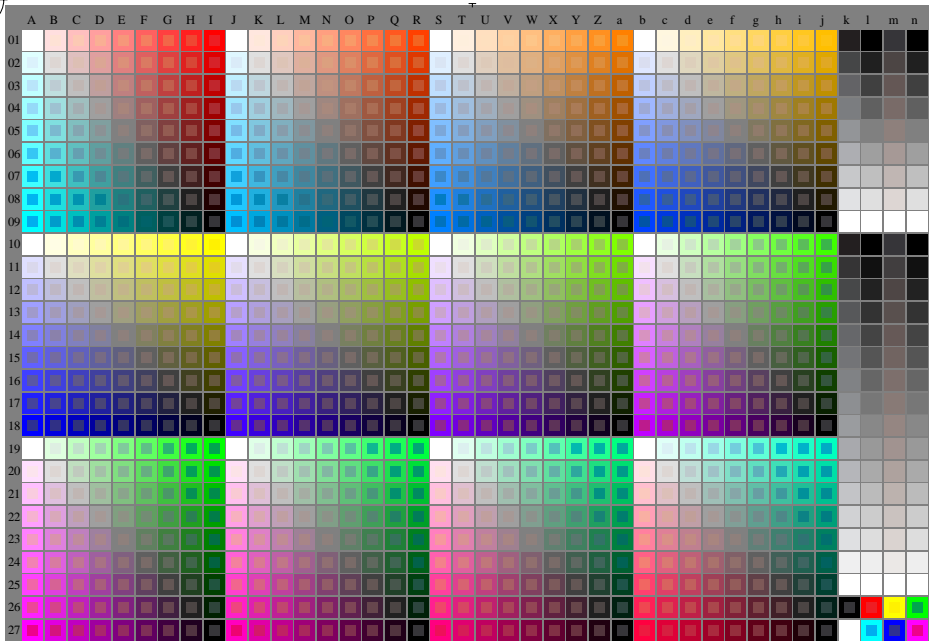


<http://farbe.li.tu-berlin.de/fei7/fei7l0n1.txt/.ps>; only vector graphic VG; start output
see separate images of this page: <http://farbe.li.tu-berlin.de/fei7/fei7.htm>

see similar files of the whole serie: <http://farbe.li.tu-berlin.de/feis.htm>
technical information: <http://farbe.li.tu-berlin.de/A33872E.html>
or <http://standards.iso.org/iso/9241/306/ed-2/index.html>



fei70-7n-030-0: Test chart 2o with 40x27=1080 colours; digital equidistant 9 or 16 step colour scales; Colour data in column (A-n): rgb / cmY0 (A_j + k26_n27), 000n (k), w (l), un0n (m), www (n), colorm = 0

TUB-test chart fei7; Test chart 2e_e0 with 40x27=1080 colours; DH
Digital equidistant 9 or 16 step colour scales

000n/w/cmy0/rgb
->rgb*d, 030-0:

TUB registration: 20240301-fei7/fei7l0n1.txt/.ps
application for evaluation and measurement of display or print output
TUB material: code=thadta