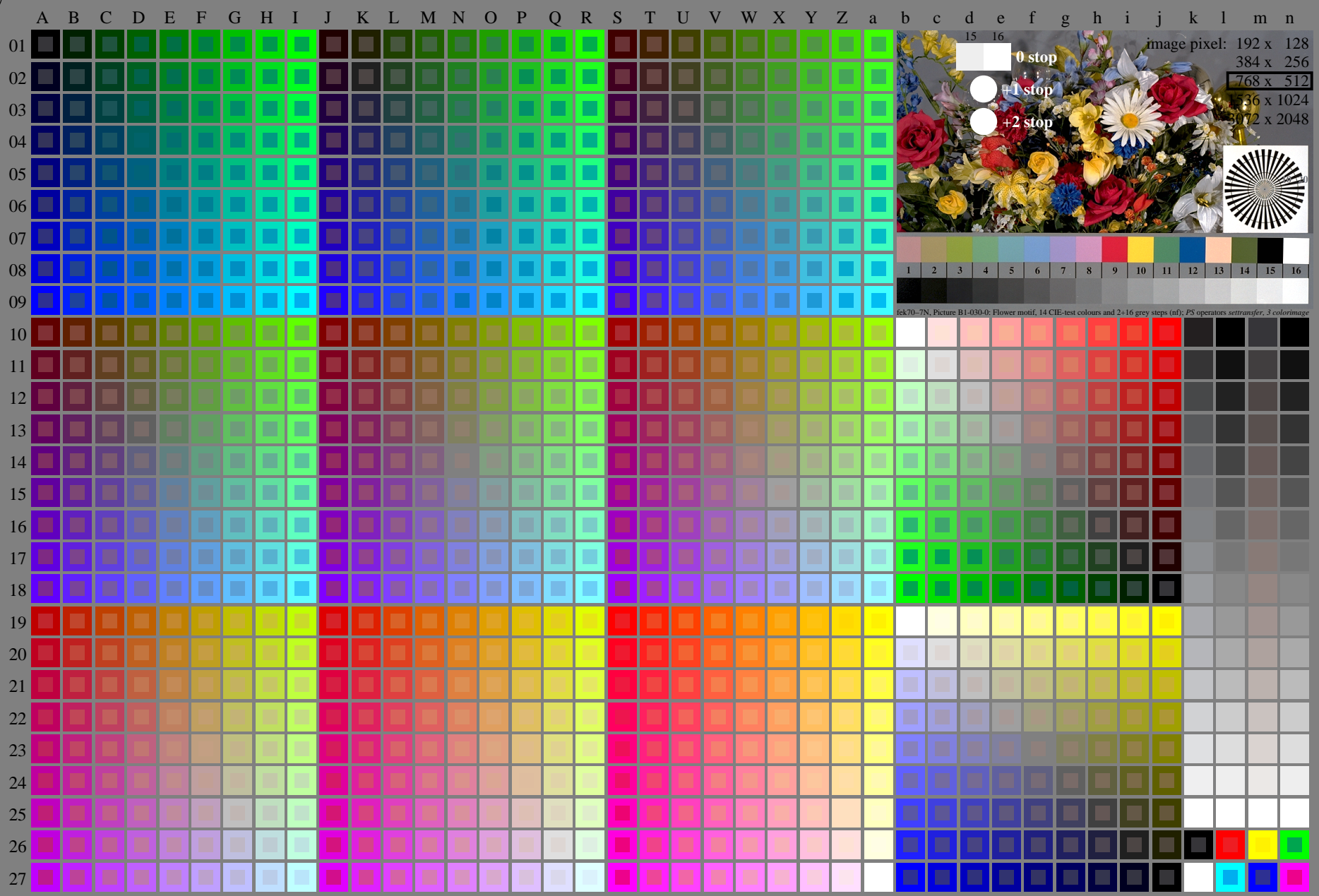


<http://farbe.li.tu-berlin.de/fek7/fek710np.pdf>; only vector graphic VG; start output  
see separate images of this page: <http://farbe.li.tu-berlin.de/fek7/fek7.htm>

see similar files of the whole series: <http://farbe.li.tu-berlin.de/feks.htm>  
technical information: <http://farbe.li.tu-berlin.de/A/33872E.html>  
or <http://standards.iso.org/iso/9241/506/ed-2/index.html>



fek70-7N, Page 1/16, Test chart 2G with 40x27=1080 colours; digital equidistant 9 or 16 step colour scales; Colour data in column (A-n): rgb + cmy0 (A\_j + k26\_n27), 000n (k), w (l), nnn0 (m), www (n), colorm = 0, xchart = 0, pchart = 0

TUB-test chart fek7; fek7: Test chart uh\_d08 with 40x27=1080 colours; DH  
Digital equidistant 9 or 16 step colour scales, L-HDR;  $\gamma_R=1,0$

000n/w/cmy0/rgb  
->rgb\*\_d, 030-0:

TUB registration: 20240301-fek7/fek710np.pdf / ps  
application for evaluation and measurement of display or print output

TUB material: code=rh4ta

http://farbe.li.tu-berlin.de/fek710np.pdf / .ps; only vector graphic VG; start output

see separate images of this page: http://farbe.li.tu-berlin.de/fek7/fek7.htm

	A	B	C	D	E	F	G	H	I	J	K	L	M	N	O	P	Q	R	S	T	U	V	W	X	Y	Z	a	b	c	d	e	f	g	h	i	j	k	l	m	n					
01	0000 A01	0009 B01	0018 C01	0027 D01	0036 E01	0045 F01	0054 G01	0063 H01	0072 I01	0081 J01	0090 K01	0099 L01	0108 M01	0117 N01	0126 O01	0135 P01	0144 Q01	0153 R01	0162 S01	0171 T01	0180 U01	0189 V01	0198 W01	0207 X01	0216 Y01	0225 Z01	0234 a01																		
02	0.00	0.125	0.25	0.375	0.5	0.625	0.75	0.875	1.0	0.00	0.125	0.25	0.375	0.5	0.625	0.75	0.875	1.0	0.00	0.125	0.25	0.375	0.5	0.625	0.75	0.875	1.0	0.00	0.125	0.25	0.375	0.5	0.625	0.75	0.875	1.0	0.00	0.125	0.25	0.375	0.5	0.625	0.75	0.875	1.0

see similar files of the whole series: http://farbe.li.tu-berlin.de/feks.htm  
technical information: http://farbe.li.tu-berlin.de/A/33872E.html  
or http://standards.iso.org/iso/9241/306/ed-2/index.html

TUB registration: 20240301-fek7/fek710np.pdf / .ps  
application for evaluation and measurement of display or print output

TUB material: code=r4a14

fek70-70. Page 2/16. Test chart G with 40x27=1080 colours; digital equidistant 9 or 16 step colour scales; Colour data in column (A-n): rgb(A.j + k26.n27), 000n(k), w(l), nnn0(m), www(n), colorm = 0, xchart = 0, pchart = 1

TUB-test chart fek7; fek7: Test chart un\_d08 with 40x27=1080 colours; DH 0000n/w/cmy0/rgb  
Digital equidistant 9 or 16 step colour scales, L-HDR; γR=1.0 ->rgb\*\_d, 030-1:

see similar files of the whole series: <http://farbe.li.tu-berlin.de/feks.htm>  
 technical information: <http://farbe.li.tu-berlin.de/A/33872E.html>  
 or <http://standards.iso.org/iso/9241/306/ed-2/index.html>

TUB registration: 20240301-fek7/fek710np.pdf / ps  
 application for evaluation and measurement of display or print output  
 TUB material: code=rh4ta

i	LAB*ref	l*out	LAB*out	LAB*out/c-ref	$\Delta E^*$	Start output S1
1	0.0	0.0	0.0	0.0	0.0	0.01
2	6.36	0.0	0.07	6.36	0.0	0.01
3	12.72	0.0	0.13	12.72	0.0	0.01
4	19.08	0.0	0.2	19.08	0.0	0.01
5	25.44	0.0	0.27	25.44	0.0	0.01
6	31.8	0.0	0.33	31.8	0.0	0.01
7	38.16	0.0	0.4	38.16	0.0	0.01
8	44.52	0.0	0.47	44.52	0.0	0.01
9	50.89	0.0	0.53	50.89	0.0	0.01
10	57.25	0.0	0.6	57.25	0.0	0.01
11	63.61	0.0	0.67	63.61	0.0	0.01
12	69.97	0.0	0.73	69.97	0.0	0.01
13	76.33	0.0	0.8	76.33	0.0	0.01
14	82.69	0.0	0.87	82.69	0.0	0.01
15	89.05	0.0	0.93	89.05	0.0	0.01
16	95.41	0.0	1.0	95.41	0.0	0.01
17	0.0	0.0	0.0	0.0	0.0	0.01
18	23.85	0.0	0.25	23.85	0.0	0.01
19	47.71	0.0	0.5	47.71	0.0	0.01
20	71.56	0.0	0.75	71.56	0.0	0.01
21	95.41	0.0	1.0	95.41	0.0	0.01

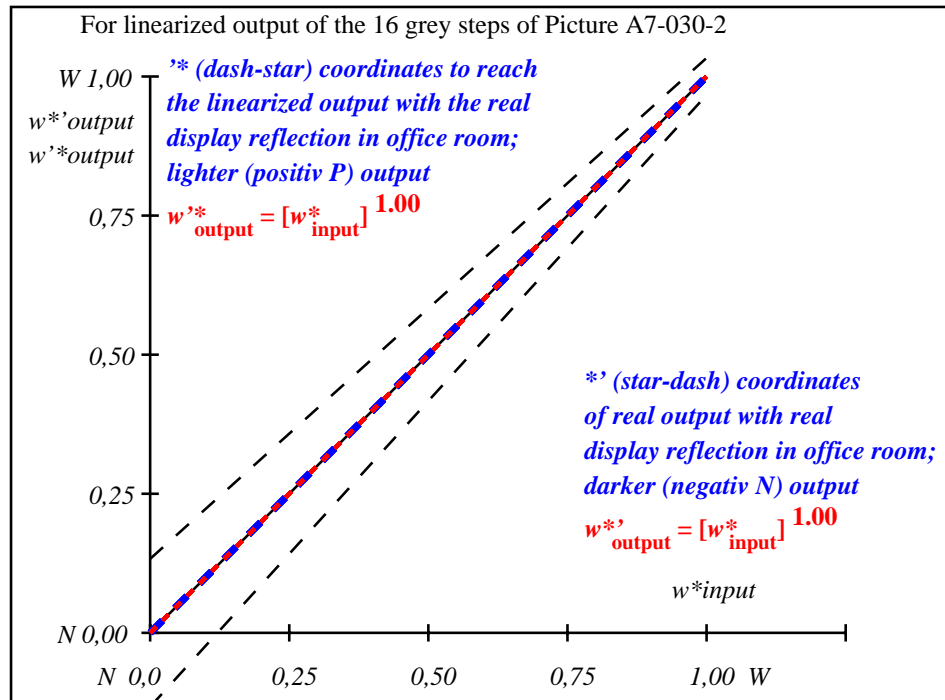
Specification according to ISO/IEC 15775 Annex G and DIN 33866-1 Annex G

Mean lightness difference (16 steps)  
 $\Delta E^*_{CIELAB} = 0.0$

Mean lightness difference (5 steps)  
 $\Delta L^*_{CIELAB} = 0.0$

Mean colour reproduction index:  $R^*_{ab,m} = 100$

fek70-3N-030-2: File: Measure unknown; Device: Device unknown; Date: Date unknown



fek71-3N-030-2: File: Measure unknown; Device: Device unknown; Date: Date unknown

$L^*/Y^*_{intended}$ (absolute)	0.0/0.0	6.4/0.7	12.7/1.5	19.1/2.8	25.4/4.6	31.8/7.0	38.2/10.2	44.5/14.2	50.9/19.2	57.2/25.2	63.6/32.3	70.0/40.7	76.3/50.4	82.7/61.6	89.0/74.3	95.4/88.6
$w^* w^* w^*$ setrgb gp=1.00																
No. and Hex code	00;F	01;E	02;D	03;C	04;B	05;A	06;9	07;8	08;7	09;6	10;5	11;4	12;3	13;2	14;1	15;0
$w^* = L^*_{CIELAB,r}$ (relative)																
$w^*_{intended}$	0,000	0,067	0,133	0,200	0,267	0,333	0,400	0,467	0,533	0,600	0,667	0,733	0,800	0,867	0,933	1,000
$w^*_{out}$	0,0	0,067	0,133	0,2	0,267	0,333	0,4	0,467	0,533	0,6	0,667	0,733	0,8	0,867	0,933	1,0

fek70-7N-030-2: 16 visual equidistant  $L^*$ -grey steps; PS operator:  $w^* w^* w^*$  setrgbcolor