

<http://farbe.fh-berlin.de/FEK8/FEK806L.txt/>; ps; only vector graphic VG; start output
see separate images of this page: <http://farbe.fh-berlin.de/FEK8/FEK8.htm>

see similar files of the whole serie: <http://farbe.fh-berlin.de/FEK8.htm>
technical information: <http://farbe.fh-berlin.de/A33732.html>
or <http://www.fh-berlin.de/2/index.html>

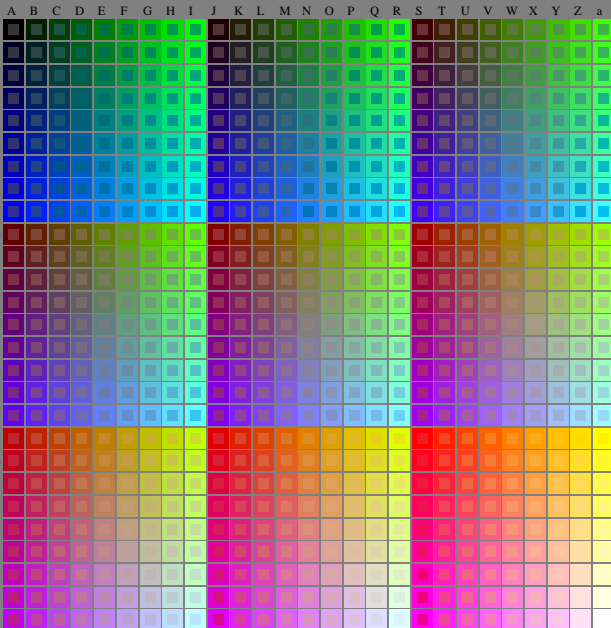


image pixel: 192 x 128
384 x 256
768 x 512
136 x 1024
112 x 2048

0 stop
+1 stop
+2 stop

1 2 3 4 5 6 7 8 9 10 11 12 13 14 15 16

FEK8-7N, Pagina 01-010-0, Format: psmt, 10 CMYK not colors and 2-16 gray steps left, PS operators automatic, 2 columns

TUB registration: 20240301-fek8/fek810n1.txt/.ps
application for evaluation and measurement of display or print output
TUB material: code=thadta

fek80-7N, Page 1/16, Test chart 2G with 40x27=1080 colours; digital equidistant 9 or 16 step colour scales; Colour data in column (A-n): rgb + cmy0 (A, j + k26_n27), 000n (k), w (l), nnn0 (m), www (n), colorm = 0, xchart = 0, pchart = 0

TUB-test chart fek8; fek8: Test chart uh_d08 with 40x27=1080 colours; DH
Digital equidistant 9 or 16 step colour scales, L-HDR; $\gamma_R=0,80$

000n/w/cmy0/rgb
->rgb*_d_030-0: