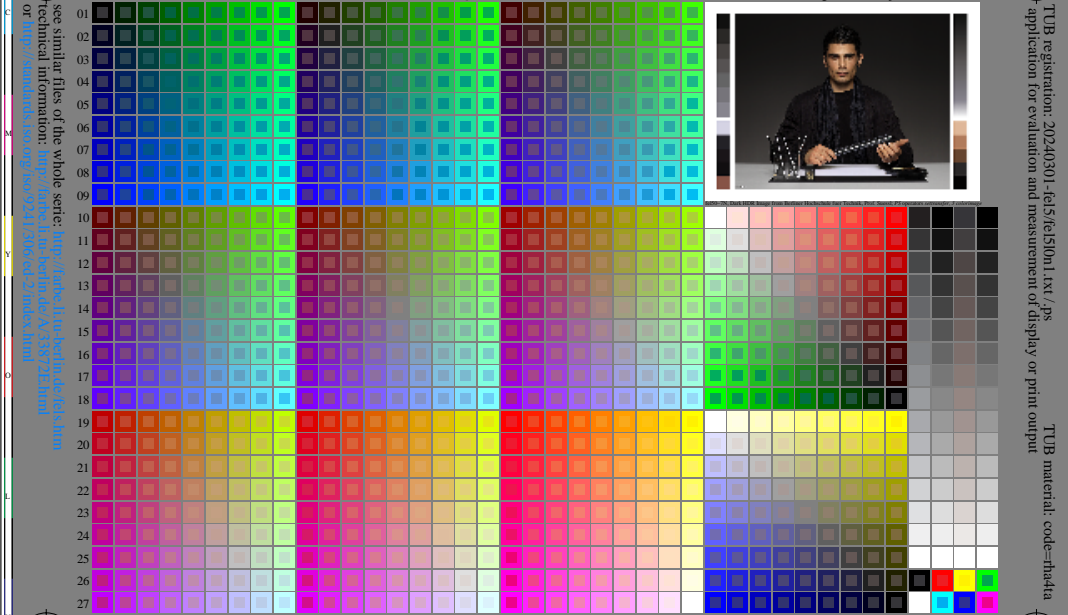


<http://farbe.li.tu-berlin.de/fel5/fel50n1.txt/ps>; only vector graphic VG; start output  
see separate images of this page: <http://farbe.li.tu-berlin.de/fel5/fel5.htm>

see similar files of the whole serie: <http://farbe.li.tu-berlin.de/fel5.htm>  
technical information: <http://farbe.li.tu-berlin.de/A33972.html>  
or <http://www.rwth-aachen.de/2/index.html>

TUB registration: 20240301-fel5/fel510n1.txt/ps  
application for evaluation and measurement of display or print output  
TUB material: code=thadta

A B C D E F G H I J K L M N O P Q R S T U V W X Y Z a b c d e f g h i j k l m n



fel50-7N, Page 1/16, Test chart 2G with 40x27=1080 colours; digital equidistant 9 or 16 step colour scales; Colour data in column (A-n):  $rgb + cmy0(A, j + k26_n27)$ , 000n (k), w (l), nm0 (m), www (n), colorn = 0, xchart = 0, pchart = 0

TUB-test chart fel5; fel5: Test chart ul\_d09 with 40x27=1080 colours; DH  
Digital equidistant 9 or 16 step colour scales, D-HDR;  $\gamma_R=0,9$

000n/w/cmy0/rgb  
->rgb\*\_d\_030-0: