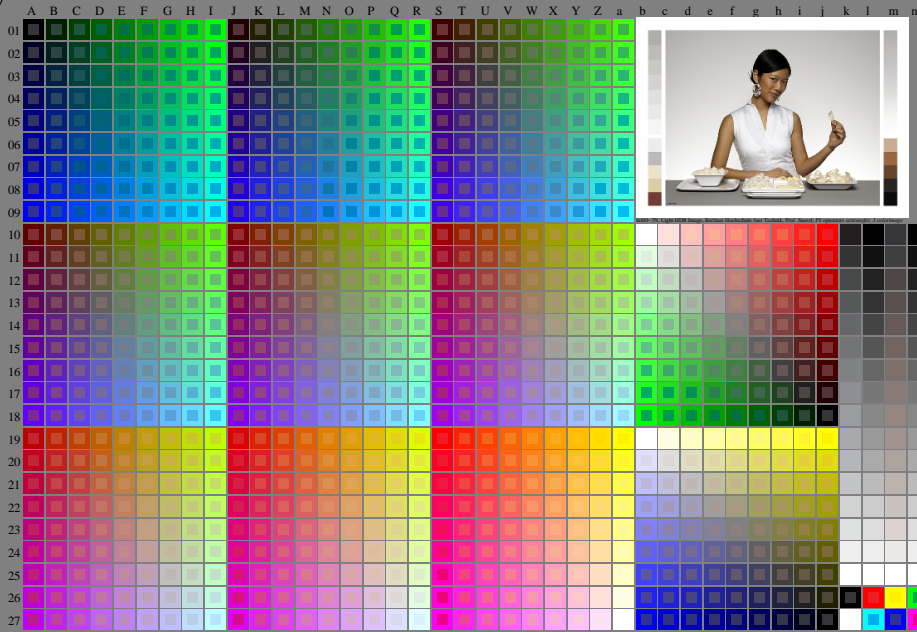


<http://farbe.li.tu-berlin.de/fel6/fel60n1.txt/ps>; only vector graphic VG; start output  
see separate images of this page: <http://farbe.li.tu-berlin.de/fel6/fel6.htm>

see similar files of the whole serie: <http://farbe.li.tu-berlin.de/fel6.htm>  
technical information: <http://farbe.li.tu-berlin.de/A33972.html>  
or <http://www.fraunhofer.org/109241/5896ed-2/index.html>

TUB registration: 20240301-fel6/fel60n1.txt/ps  
application for evaluation and measurement of display or print output

TUB material: code=thd-tia



fel60-7N, Page 1/16, Test chart 2G with 40x27=1080 colours; digital equidistant 9 or 16 step colour scales; Colour data in column (A-n):  $rgb + cmy0(A_j + k26_n27)$ , 000n (k), w (l), nm0 (m), www (n), colorn = 0, xchart = 0, pchart = 0

TUB-test chart fel6; fel6: Test chart uh\_d08 with 40x27=1080 colours; DH  
Digital equidistant 9 or 16 step colour scales, L-HDR;  $\gamma_R=0,8$

000n/w/cmy0/rgb  
->rgb\*\_d\_030-0: