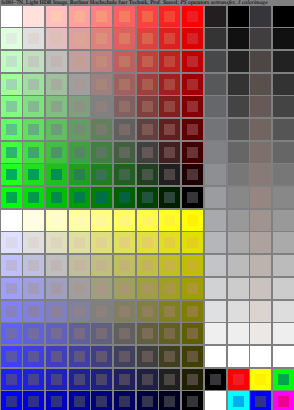
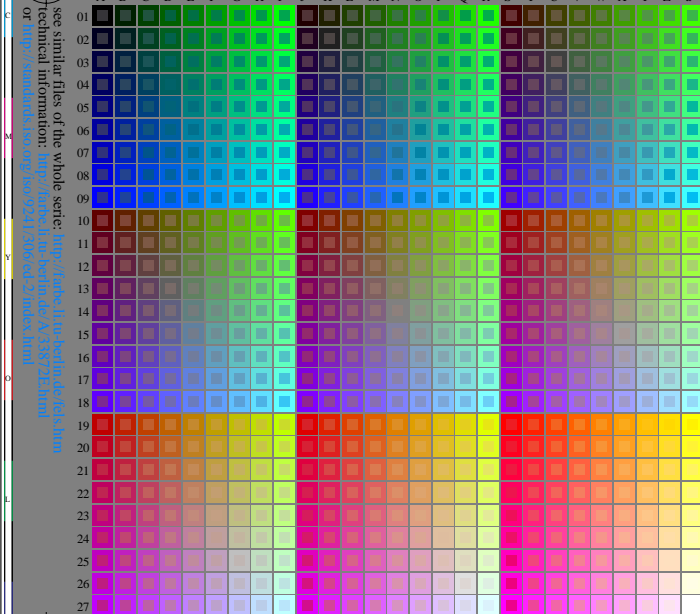


<http://farbe.li.tu-berlin.de/fel8/fel80n1.txt/ps>; only vector graphic VG; start output  
see separate images of this page: <http://farbe.li.tu-berlin.de/fel8/fel8.htm>

see similar files of the whole serie: <http://farbe.li.tu-berlin.de/fel8.htm>  
technical information: <http://farbe.li.tu-berlin.de/A33972.html>  
or <http://www.rwth-aachen.de/2/index.html>

TUB registration: 20240301-fel8/fel80n1.txt/ps  
application for evaluation and measurement of display or print output  
TUB material: code=thd-tla

A B C D E F G H I J K L M N O P Q R S T U V W X Y Z a b c d e f g h i j k l m n



fel80-7N, Page 1/16, Test chart 2G with 40x27=1080 colours; digital equidistant 9 or 16 step colour scales; Colour data in column (A-n): rgb + cmy0 (A..j + k26\_n27), 000n (k), w (l), nm0 (m), www (n), colorn = 0, xchart = 0, pchart = 0

TUB-test chart fel8; fel8: Test chart uh\_e10 with 40x27=1080 colours; DH  
Digital equidistant 9 or 16 step colour scales, L-HDR;  $\gamma_R=1,0$

000n/w/cmy0/rgb  
->rgb\*\_d.030-0: