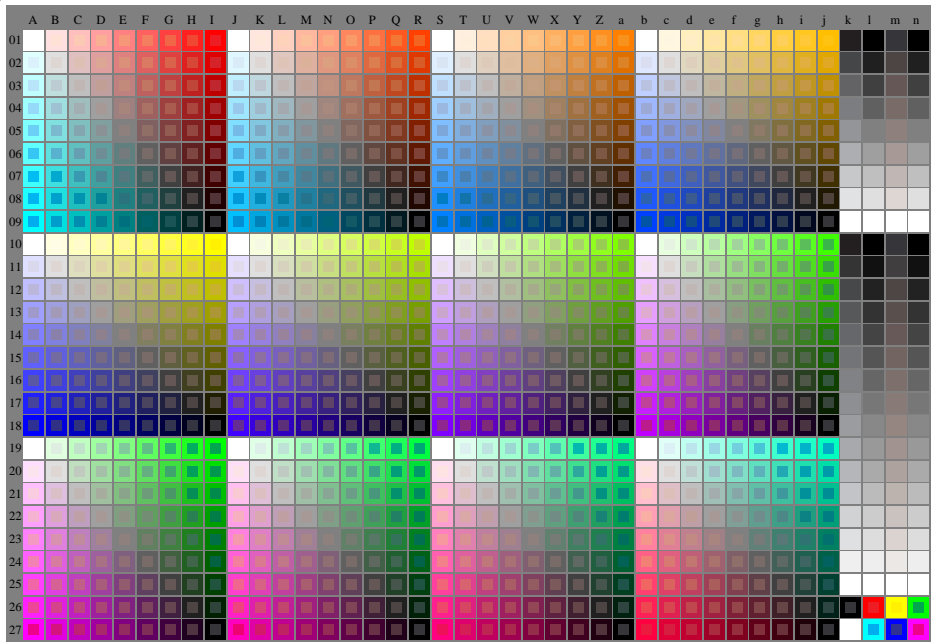


<http://farbe.li.tu-berlin.de/feu5/feu510n1.txt> / .ps; start output, Page 1/1

n: No Output Linearization (OL) data in File (f), Startup (s) or Device (d)

see similar files of the whole serie: <http://farbe.li.tu-berlin.de/feu5/hm>  
technical information: <http://farbe.li.tu-berlin.de> or <http://color.li.tu-berlin.de>



feu50-7n, 1/3, Test chart O with 40x27=1080 colours; digital equidistant 9 or 16 step colour scales; Colour data in column (A-n):  $rgb + cm\dot{y}\theta (A_j + k26_n27), 000n (k), w (l), nnn\theta (m), www (n), color\dot{m} = 0, separation = A$

TUB-test chart feu5; Colorimetric system O

40x27=1080 colours for output or measurement:

input:  $(rgb/000n/w/nnn\theta/www)_d \rightarrow olv*_d$

output: no change compared to input

TUB registration: 20240201-feu5/feu510n1.txt / .ps  
application for evaluation and measurement of display or print output

TUB material code=thadta