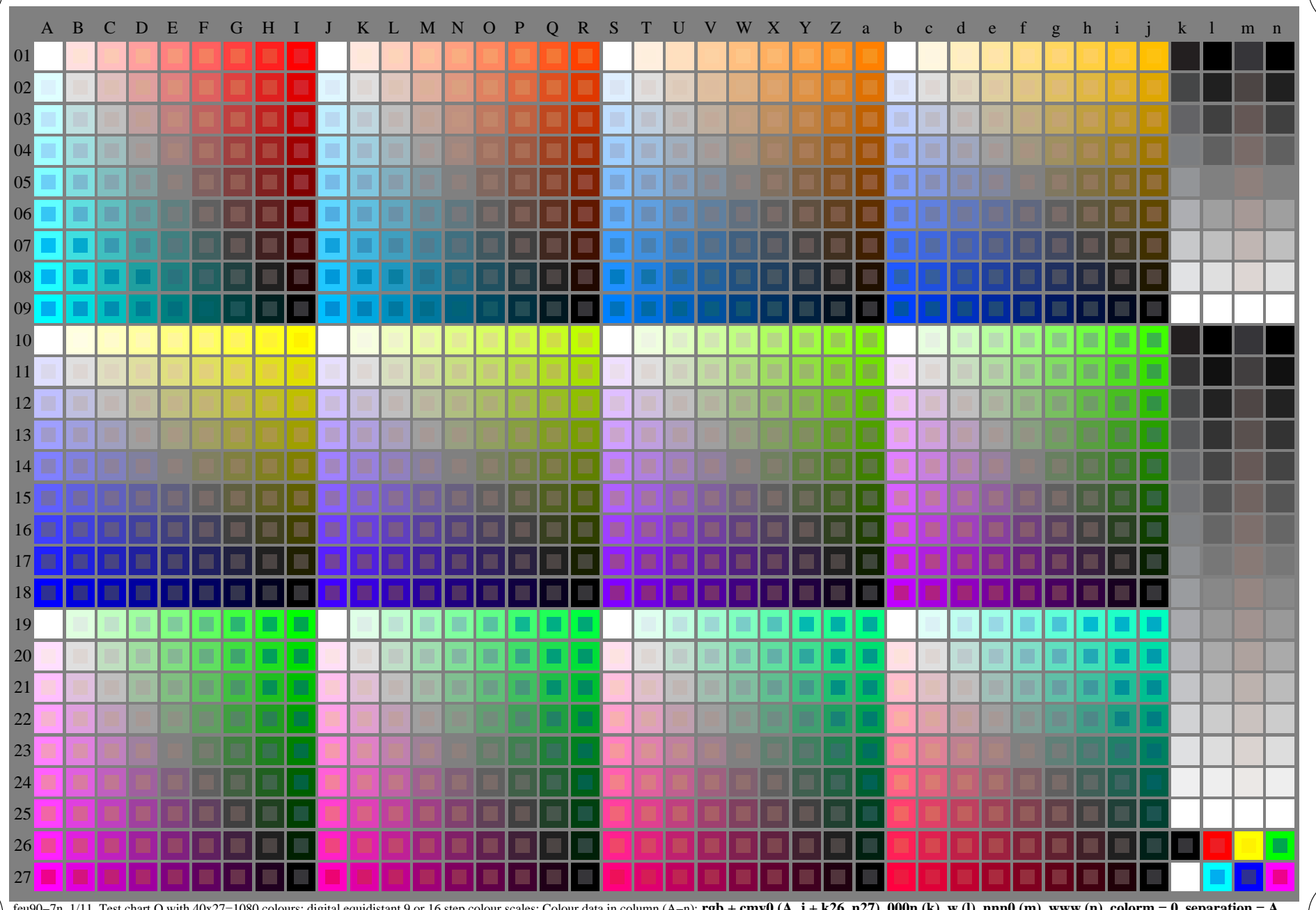
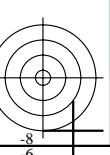
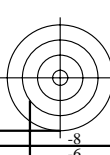


see similar files of the whole serie: <http://farbe.li.tu-berlin.de/feus.htm>  
technical information: <http://farbe.li.tu-berlin.de> or <http://color.li.tu-berlin.de>

TUB registration: 20240201-feu9/feu910np.pdf /.ps  
application for evaluation and measurement of display or print output  
TUB material: code=rh4ta

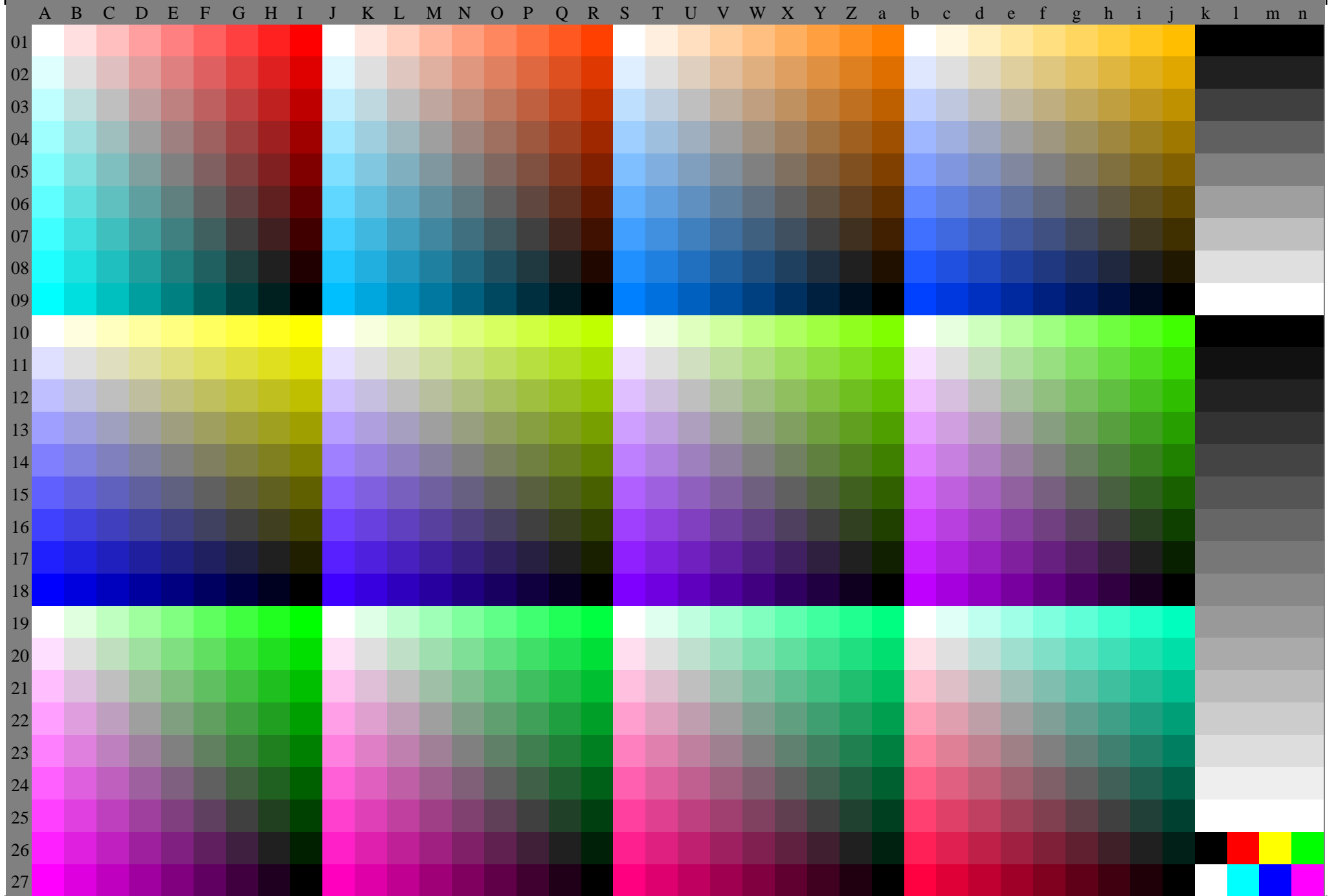


feu90-7n, 1/11, Test chart O with 40x27=1080 colours; digital equidistant 9 or 16 step colour scales; Colour data in column (A-n):  $\text{rgb} + \text{cmy0} (A\_j + k26\_n27), \text{000n} (k), \text{w} (l), \text{nnn0} (m), \text{www} (n), \text{colorm} = 0, \text{separation} = A$   
TUB-test chart feu9; Colorimetric system O  
40x27=1080 colours for output or measurement:  
input:  $(\text{rgb}/\text{000n}/\text{w}/\text{nnn0}/\text{www})_d \rightarrow \text{olv}*_d$   
output: no change compared to input



A grid of 27 rows and 36 columns of numerical data. The columns are labeled A through n. The rows are labeled 01 through 27. Each cell contains a set of three numerical values, likely representing color components for a specific row and column.

Feu90-7n, 211, Test chart O with 40x27=1080 colours; digital equidistant 9 or 16 step colour scales; Colour data in (A~n):  $rgb(A_j + k26_{n27}, 000n(k), 1, n), n(n), w(w), w(w), color = 0, separation = F$

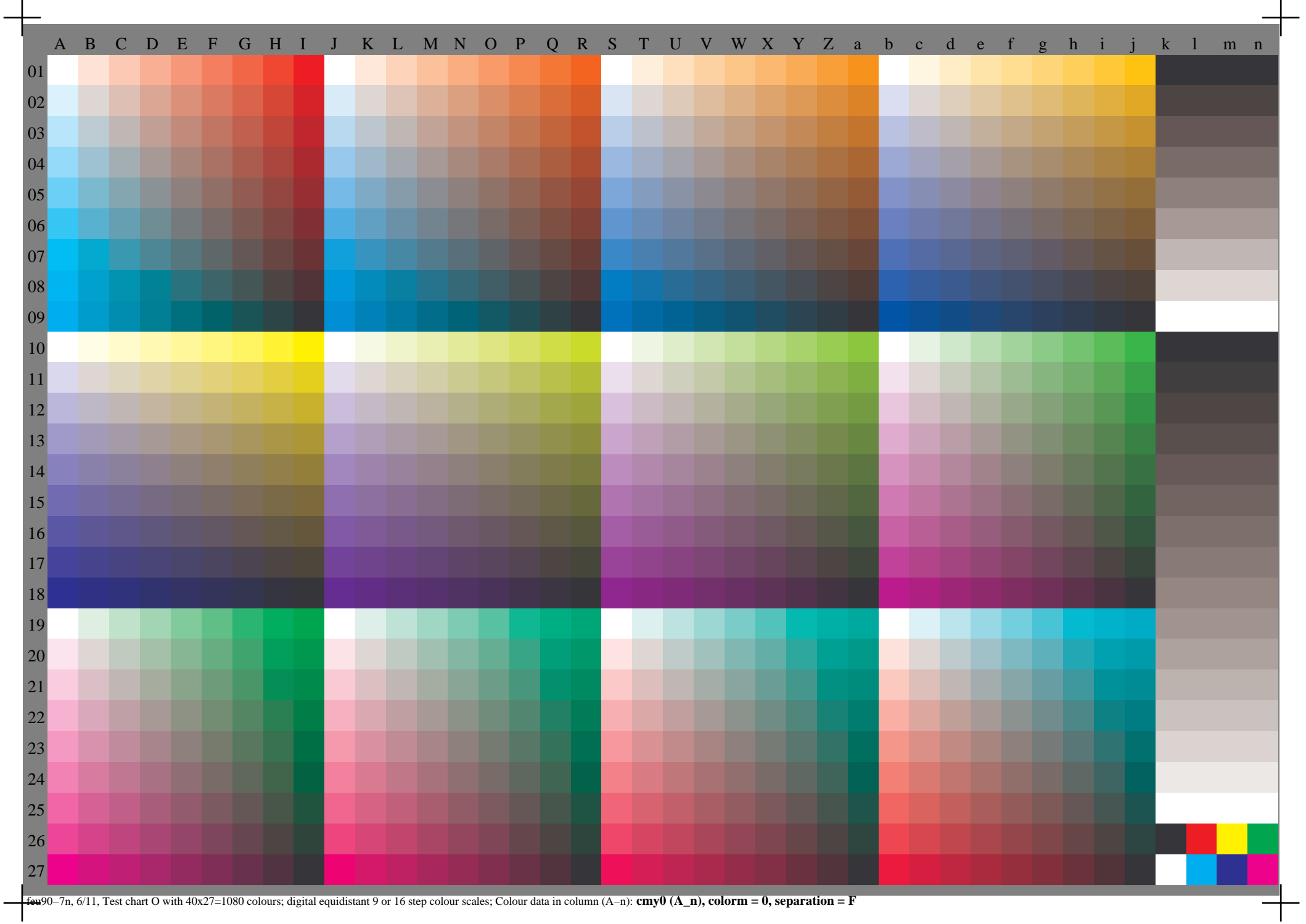


311, Test chart O with 40x27=1080 colours; digital equidistant 9 or 16 step colour scales; Colour data in column (A\_n), colorm = 0, separation = F

Table with 28 rows (01-27) and 56 columns (A-Z, a-z). Each cell contains a percentage value. Row 01-02 are red, row 09 is blue, and row 18 is yellow. The values in the table represent color calibration data for a test chart.

Feu90-7n, 4/11, Test chart C with 40x27=1080 colours; digital equidistant 9 or 16 step colour scales; Colour data in column (A-n): **rgb** (A\_n), **colorm = C**, **separation = F**







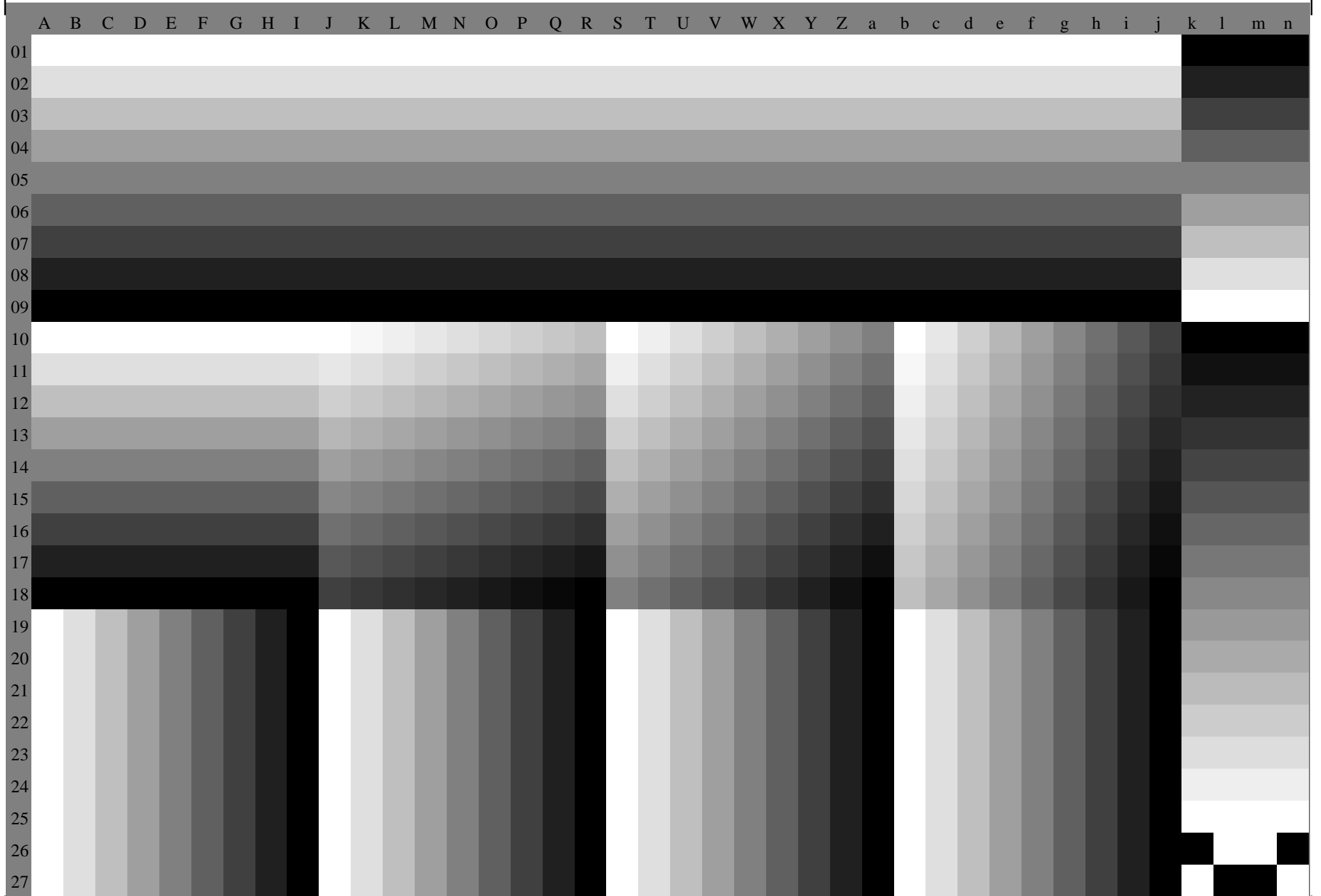


Fig 90-7n, 8/11, Test chart O with 40x27=1080 colours; digital equidistant 9 or 16 step colour scales; Colour data in column (A-n): **c(A\_n), colorm = 0, separation = C**



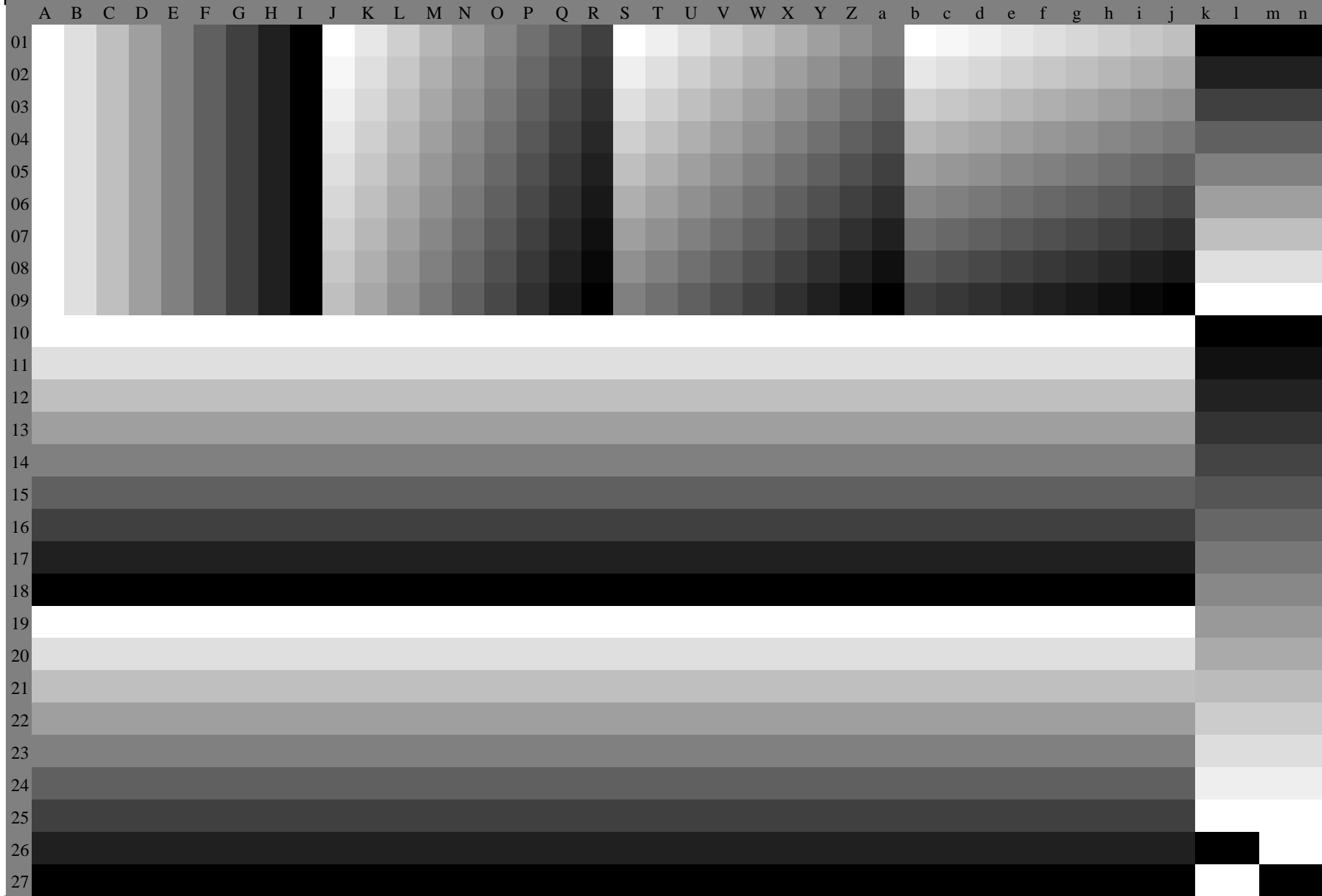


Fig. 90-7n, 9/11, Test chart O with 40x27=1080 colours; digital equidistant 9 or 16 step colour scales; Colour data in column (A-n): **m (A\_n), colorm = 0, separation = M**

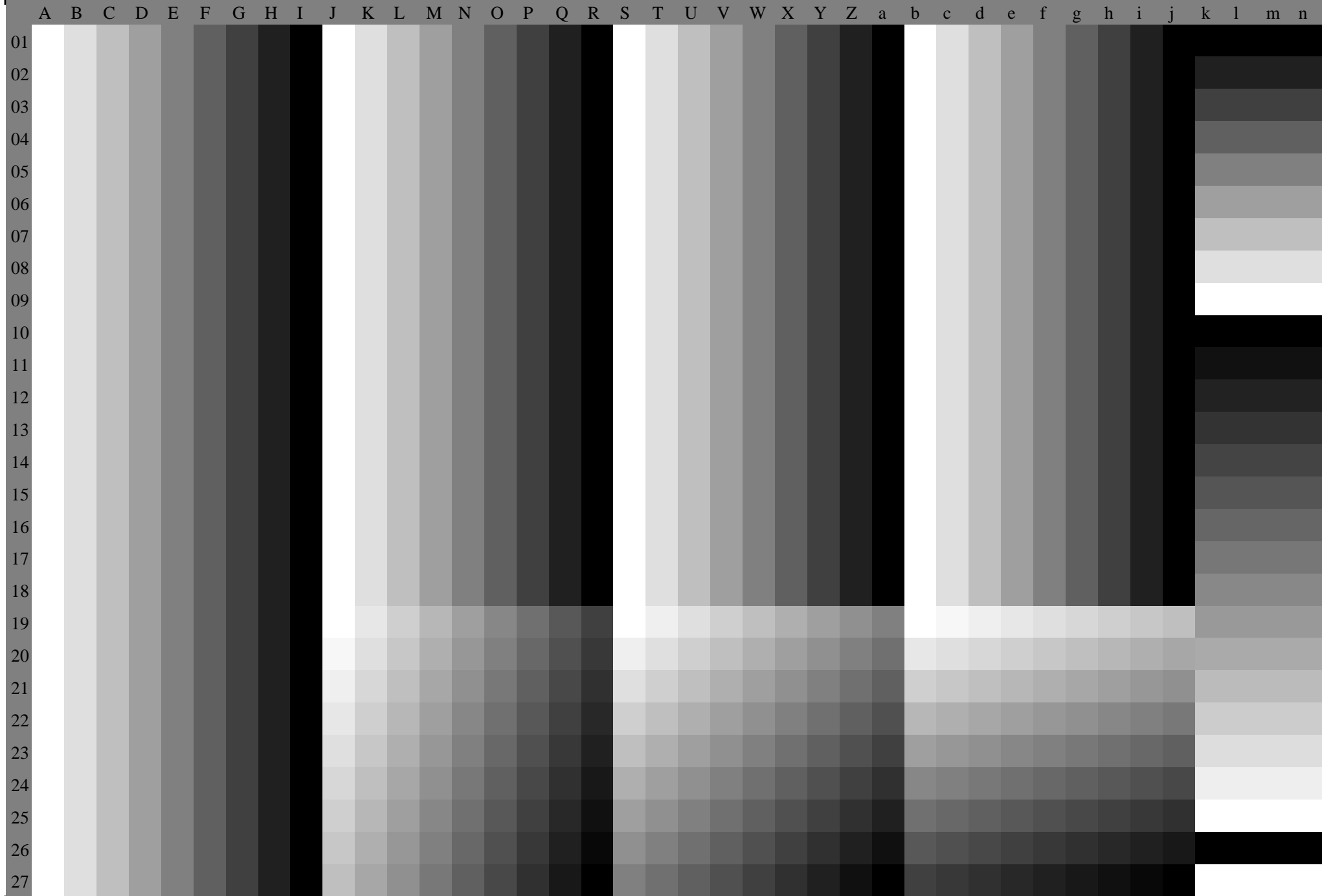


Fig. 90-7n, 10/11, Test chart O with 40x27=1080 colours; digital equidistant 9 or 16 step colour scales; Colour data in column (A-n): **y (A\_n), colorm = 0, separation = Y**

A B C D E F G H I J K L M N O P Q R S T U V W X Y Z a b c d e f g h i j k l m n

01  
02  
03  
04  
05  
06  
07  
08  
09  
10  
11  
12  
13  
14  
15  
16  
17  
18  
19  
20  
21  
22  
23  
24  
25  
26  
27