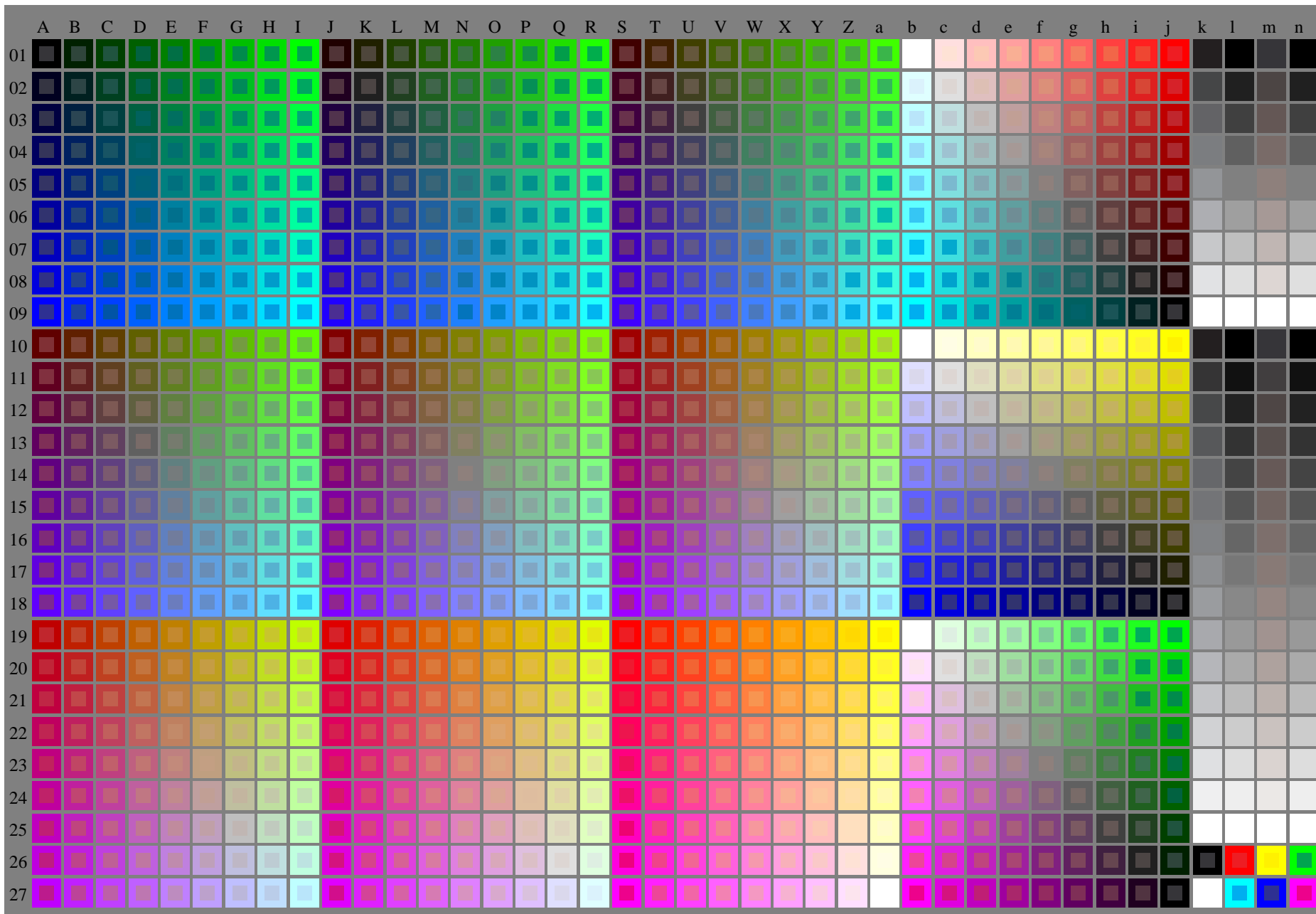


see similar files of the whole serie: <http://farbe.li.tu-berlin.de/fevs.htm>
technical information: <http://farbe.li.tu-berlin.de> or <http://color.li.tu-berlin.de>

TUB registration: 20240201-fev8/fev810np.pdf /.ps
application for evaluation and measurement of display or print output

TUB material: code=rh4ta



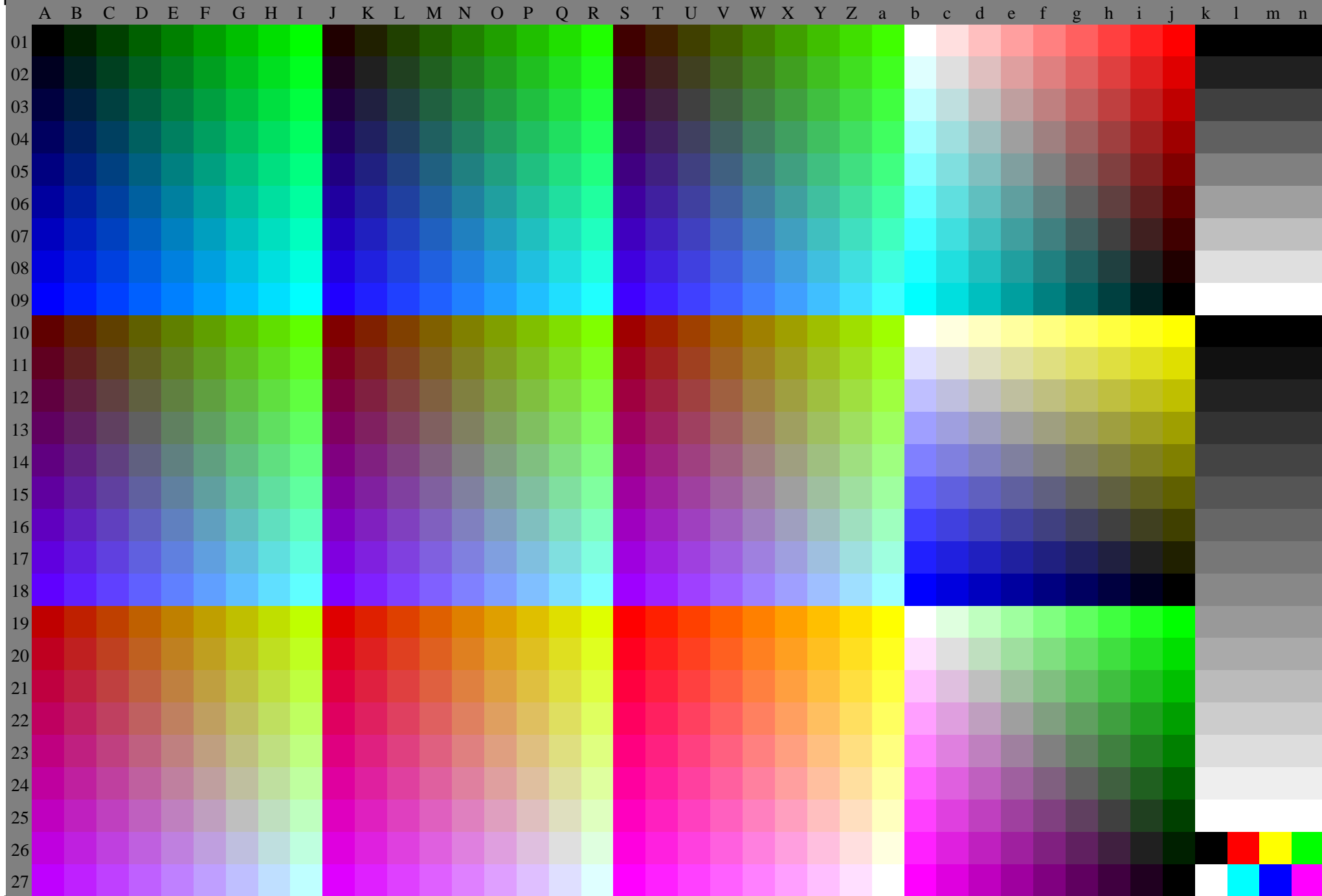
fev80-7n, 1/11, Test chart G with 40x27=1080 colours; digital equidistant 9 or 16 step colour scales; Colour data in column (A-n): $rgb + cmy0 (A_j + k26_n27), 000n (k), w (l), nnn0 (m), www (n), colorm = 0, separation = A$

TUB-test chart fev8; Colorimetric system G

40x27=1080 colours for output or measurement:

input: $(rgb/000n/w/nnn0/www)_d \rightarrow rgb*_d$

output: no change compared to input



Form 80-7n, 3/11, Test chart G with 40x27=1080 colours; digital equidistant 9 or 16 step colour scales; Colour data in column (A_n), colorm = 0, separation = F



Form 80-7n, 6/11, Test chart G with 40x27=1080 colours; digital equidistant 9 or 16 step colour scales; Colour data in column (A_n), colorm = 0, separation = F

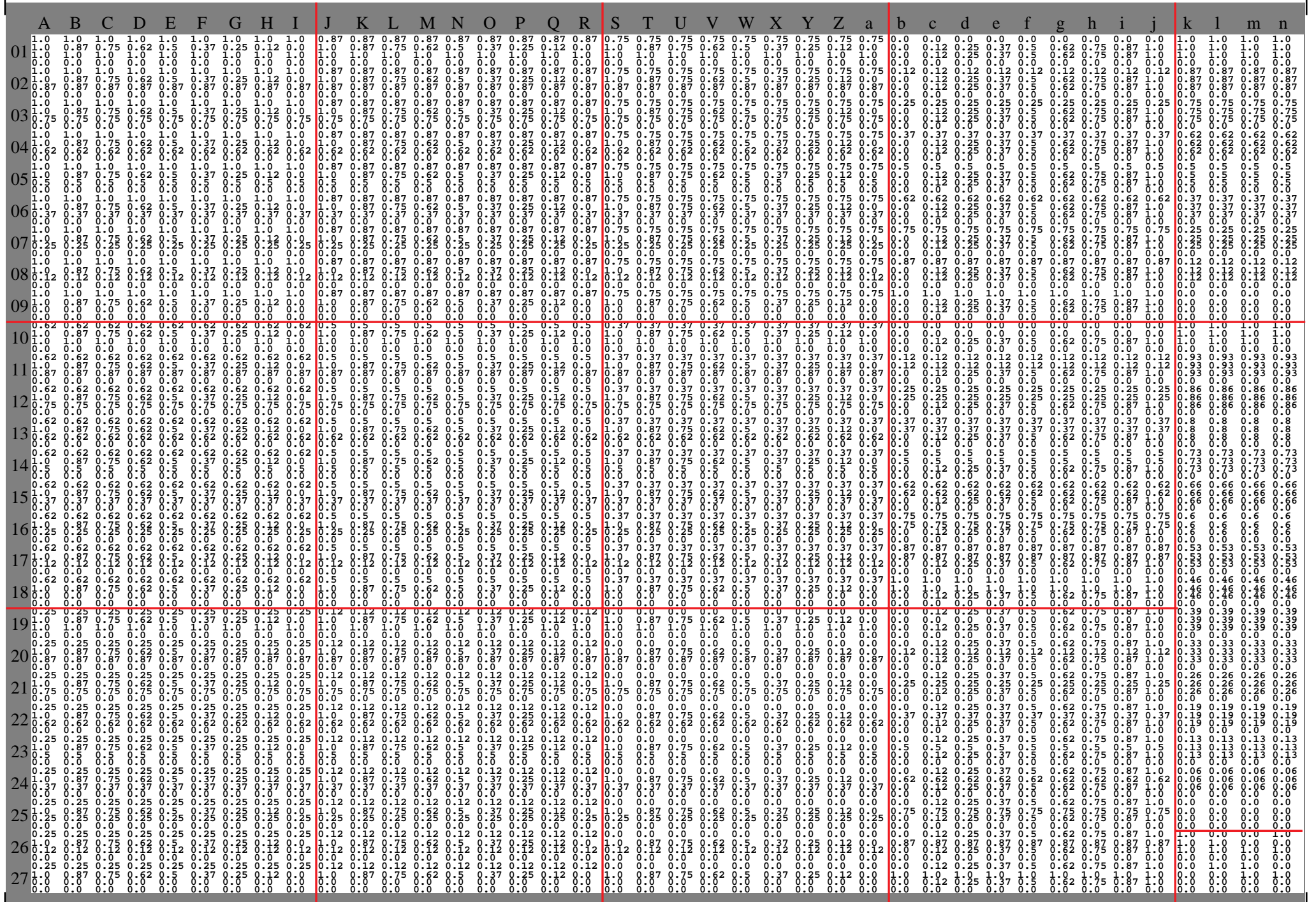


Fig 80-7n, 7/11, Test chart G with 40x27=1080 colours; digital equidistant 9 or 16 step colour scales; Colour data in column (A-n): **cmY0 (A_n), colorm = 0, separation = F**

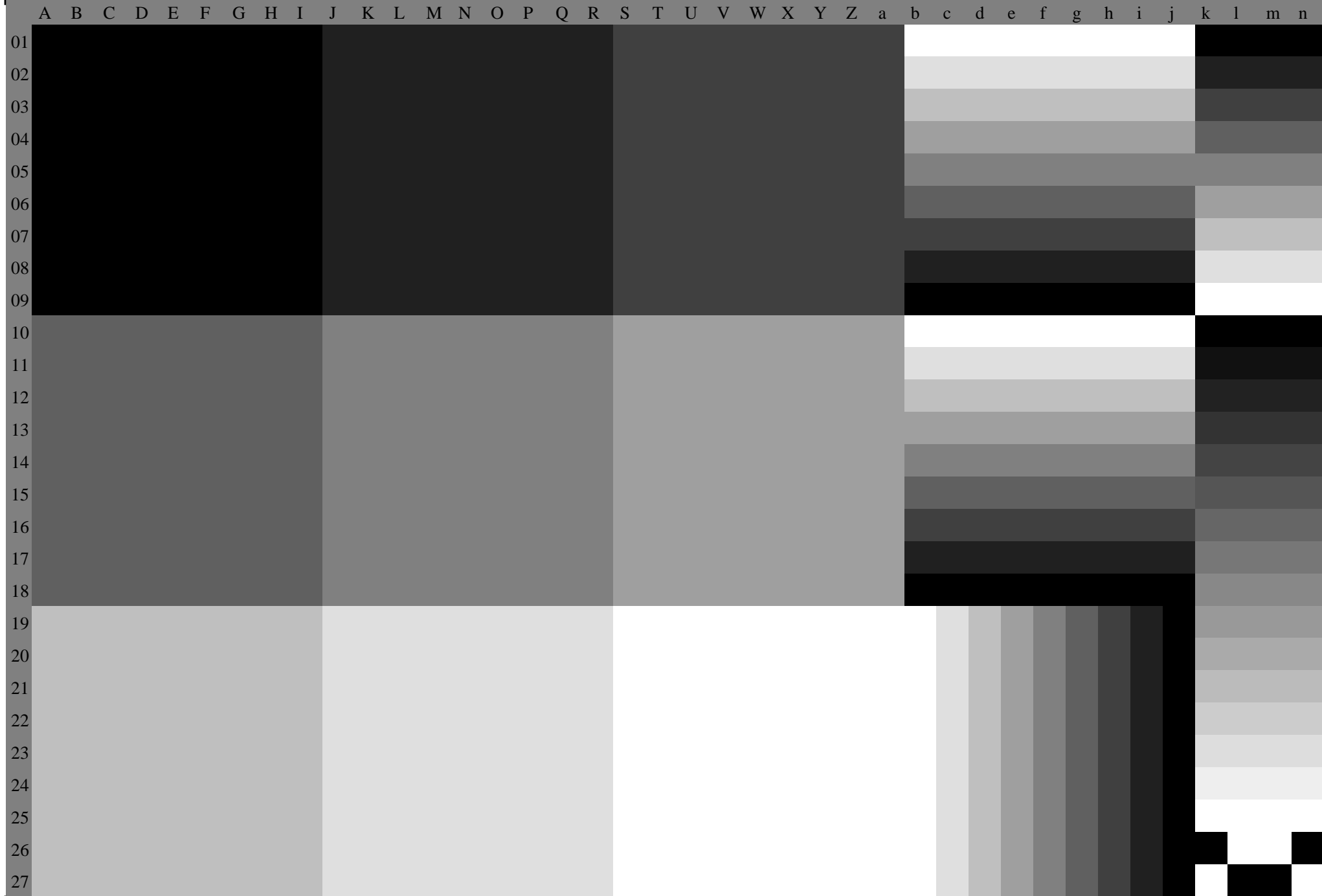
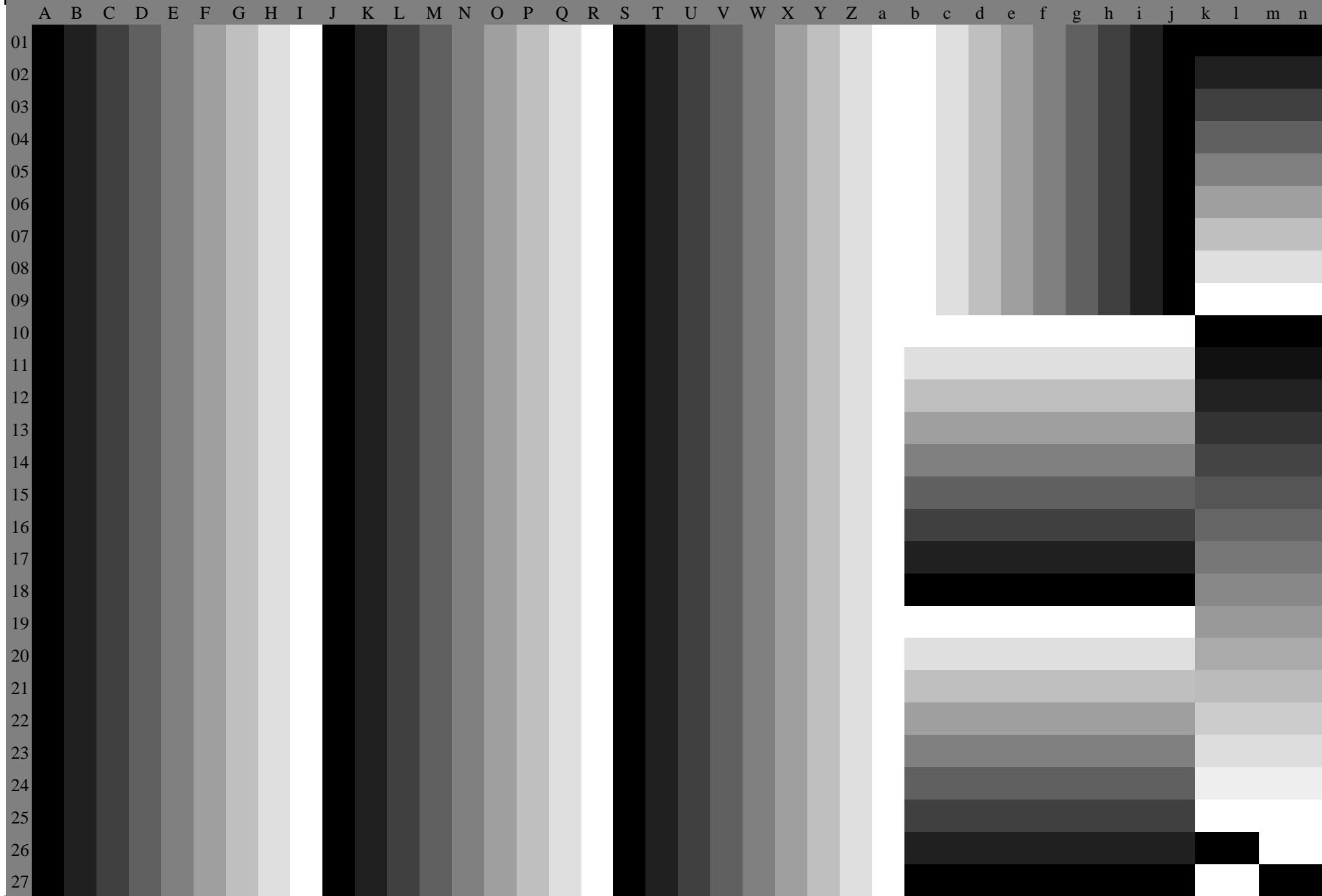
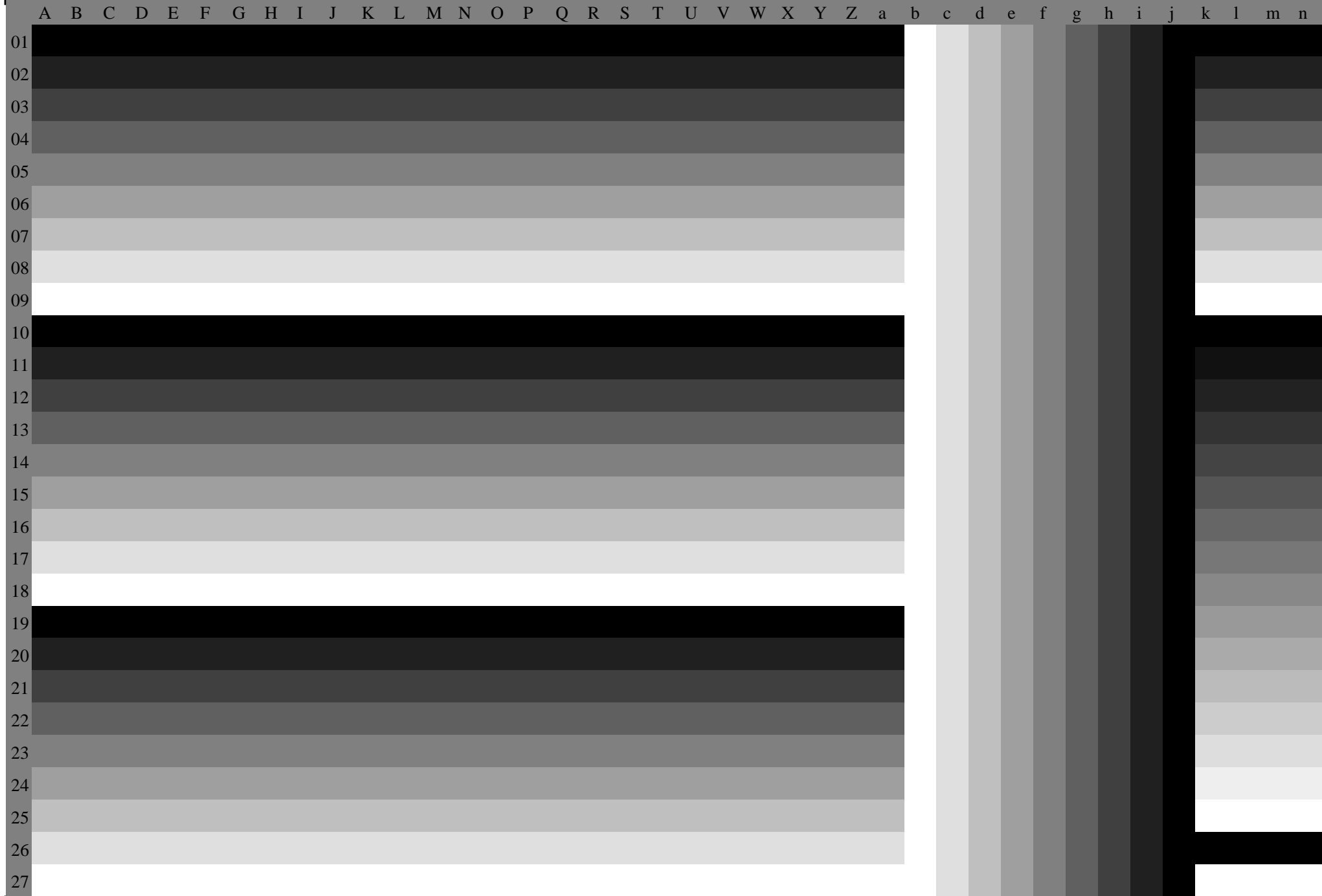


Fig. 80-7n, 8/11, Test chart G with 40x27=1080 colours; digital equidistant 9 or 16 step colour scales; Colour data in column (A-n): **c(A_n), colorm = 0, separation = C**



For 80-7n, 9/11, Test chart G with 40x27=1080 colours; digital equidistant 9 or 16 step colour scales; Colour data in column (A-n): **m (A_n), colorm = 0, separation = M**



ISO 10128-7n, 10/11, Test chart G with 40x27=1080 colours; digital equidistant 9 or 16 step colour scales; Colour data in column (A-n): **y (A_n), colorm = 0, separation = Y**

A B C D E F G H I J K L M N O P Q R S T U V W X Y Z a b c d e f g h i j k l m n

01
02
03
04
05
06
07
08
09
10
11
12
13
14
15
16
17
18
19
20
21
22
23
24
25
26
27