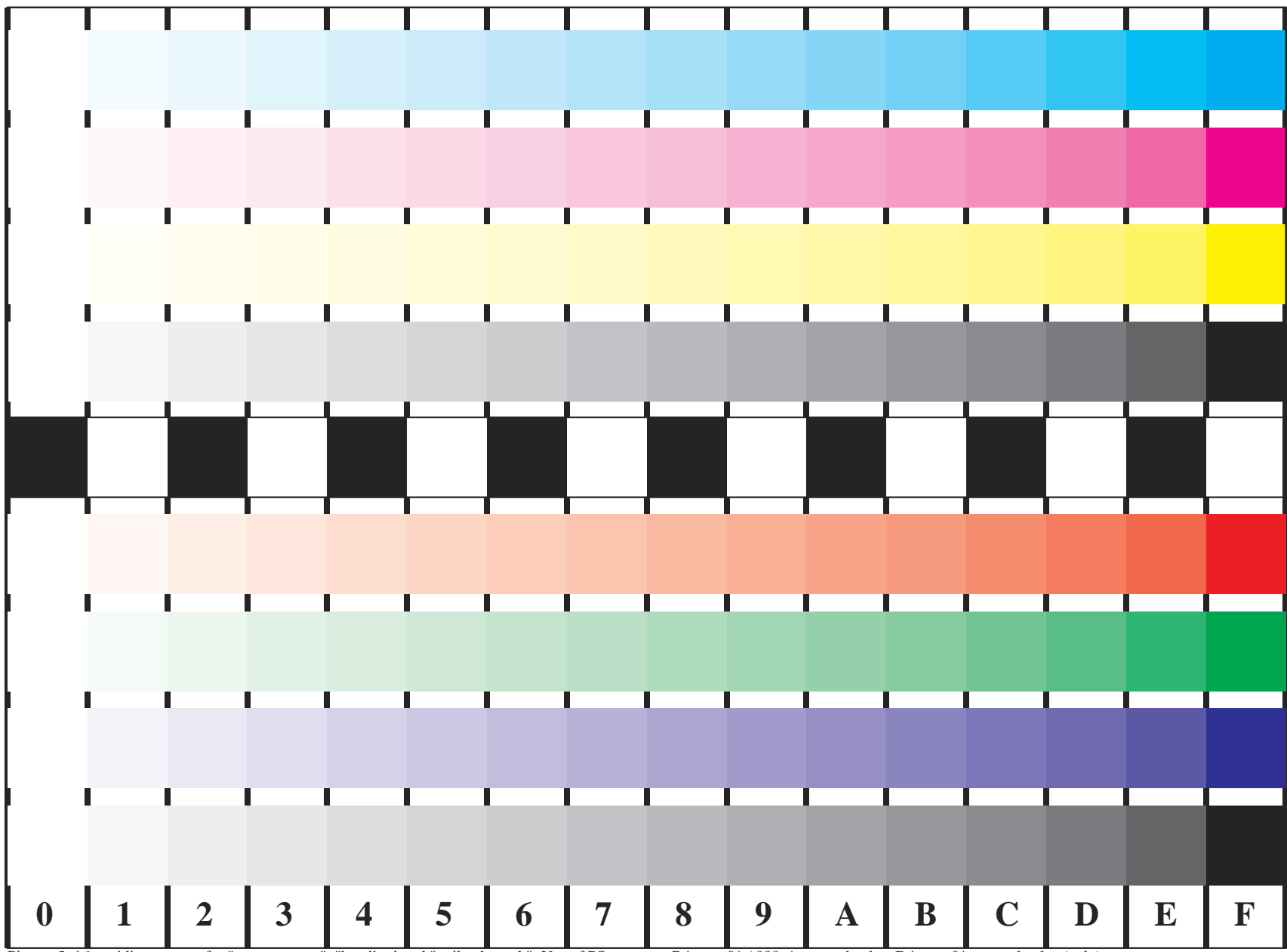
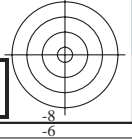
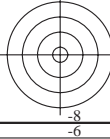


See for similar files: <http://www.ps.bam.de/BE16/>  
 Technical information: <http://www.ps.bam.de/BE16/>  
 Version 2.0, io=0,0; iORS; oORS, CIELAB

BAM registration: 20040501-BE16/10Q/Q16E00FP.PS/.PDF BAM material: code=rh4ta  
 application for relative yield and reproduction properties of chromatic printers  
 /BE16 Form: I/3, Serie: I/1, Page: 1 Page count: 1



Picture 5: 16 equidistant steps for "measurement", "banding" and "strike through"; Use of PS operator; B4:  $cm\dot{y}0^* / 000n^*$  setcmycolor; D4:  $cm\dot{y}0^*$  setcmycolor (only)

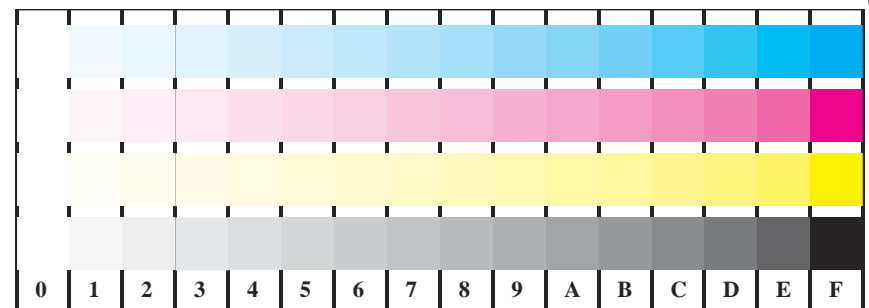


See for similar files: <http://www.ps.bam.de/BE16/>  
 Technical information: <http://www.ps.bam.de/BE16/>  
 Version 2.0, io=0,0; iORS; oORS, CIELAB

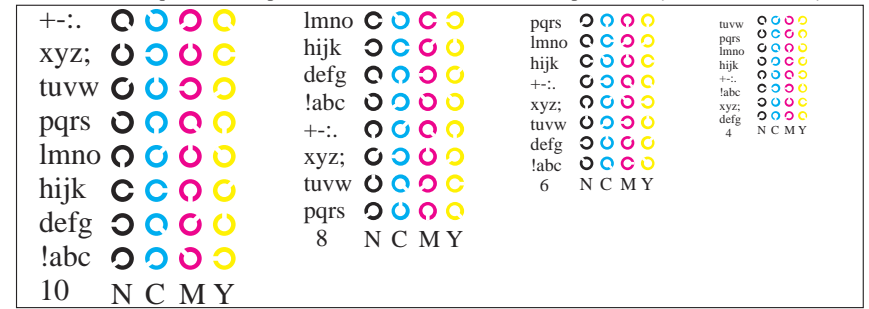
BAM registration: 20040501-BE16/10Q/Q16E01FP.PS/.PDF  
 application for relative yield and reproduction properties of chromatic printers  
 BAM material: code=rh4ta



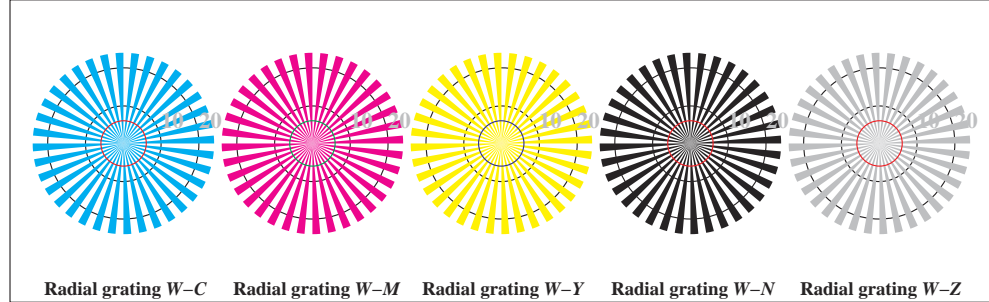
Picture B1: Colours CMYNOLVA for homogeneity and gost images; PS operator  $cm\dot{y}0^*/000n^*$  setcmykcolor



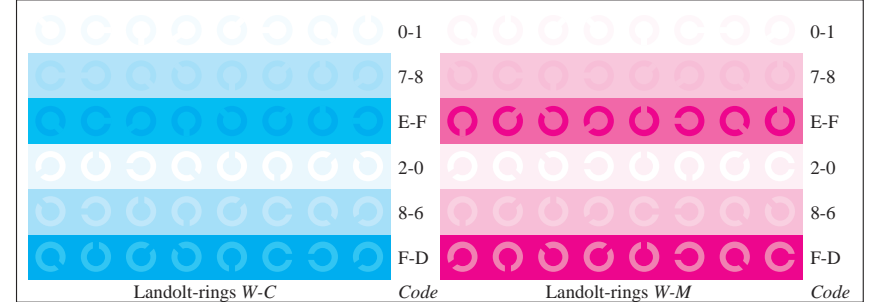
Picture B4: 16 equidistant steps W-C, W-M, W-Y and W-N; PS operator  $cm\dot{y}0^*/000n^*$  setcmykcolor



Picture B5: Script and Landolt-rings N, M, C and Y; Use of PS operator  $cm\dot{y}0^*/000n^*$  setcmykcolor



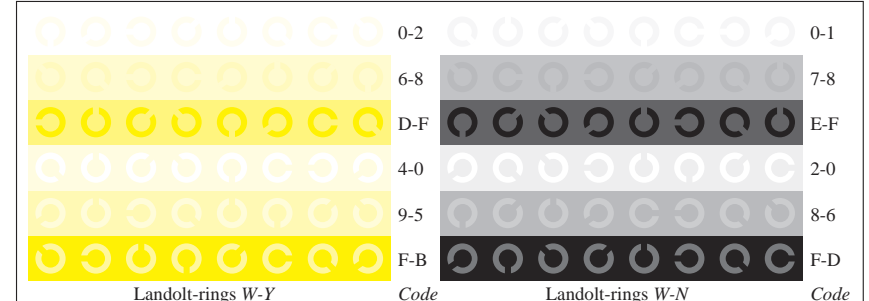
Picture B2: Radial gratings W-C, W-M, W-Y, W-N, and W-Z; PS operator  $cm\dot{y}0^*/000n^*$  setcmykcolor



Picture B6: Landolt-rings W-C and W-M; Use of PS operator  $cm\dot{y}0^*/000n^*$  setcmykcolor



Picture B3: 14 CIE-test colours and 2 + 16 grey steps; Use of PS operator  $cm\dot{y}0^*/000n^*$  setcmykcolor

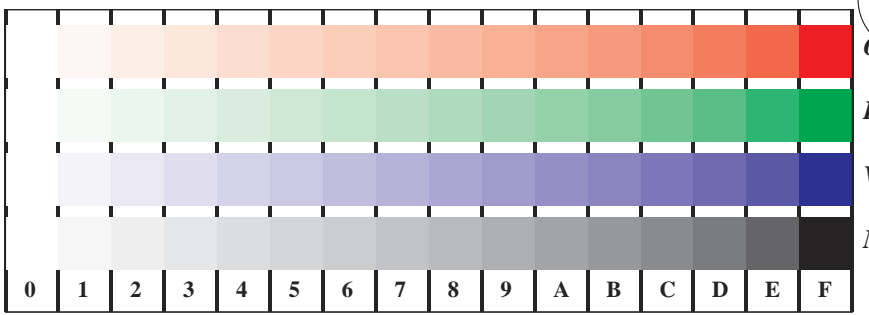


Picture B7: Landolt-rings W-Y and W-N; Use of PS operator  $cm\dot{y}0^*/000n^*$  setcmykcolor

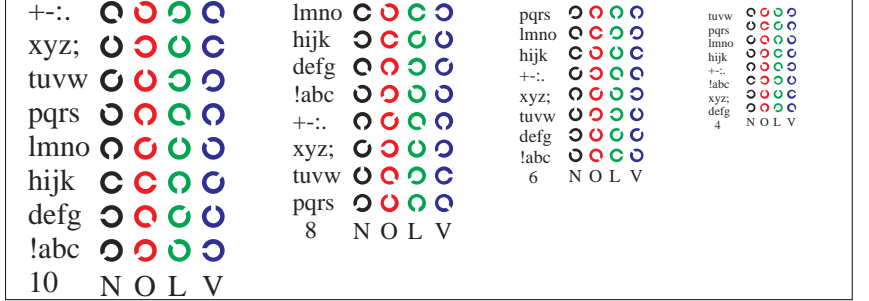
BAM-test chart no. BE16 Step: S2  
 Color reproduction properties of ISO/IEC TR 19797 and 24705  
 input:  $cm\dot{y}0^*/000n^*$  setcmykcolor  
 output:  $cm\dot{y}0^*/000n^*$  setcmykcolor



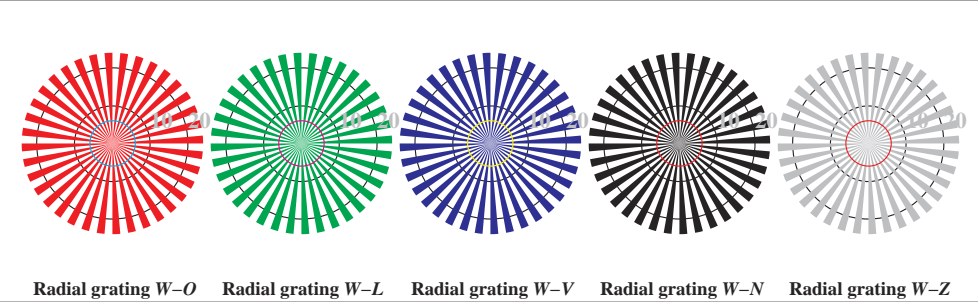
Picture D1: Colours CMYNOLVA<sub>w</sub> for homogeneity and gost images; PS operator *cmly0\*/000n\* setcmlycolor*



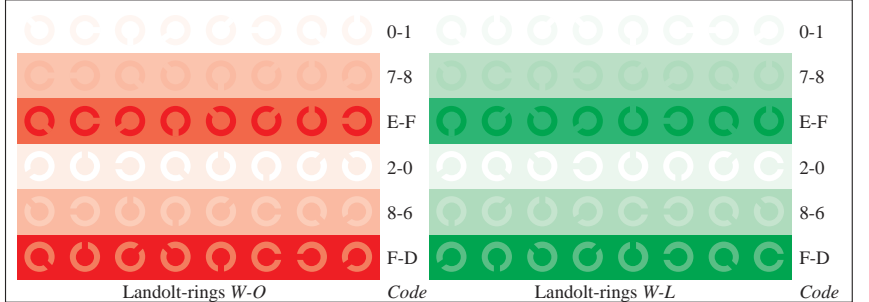
Picture D4: 16 equidistant steps W-O, W-L, W-V and W-N; Use of PS operator *cmly0\* setcmlycolor* (only)



Picture D5: Script and Landolt-rings N, O, L and V; Use of PS operator *cmly0\* setcmlycolor* (only)



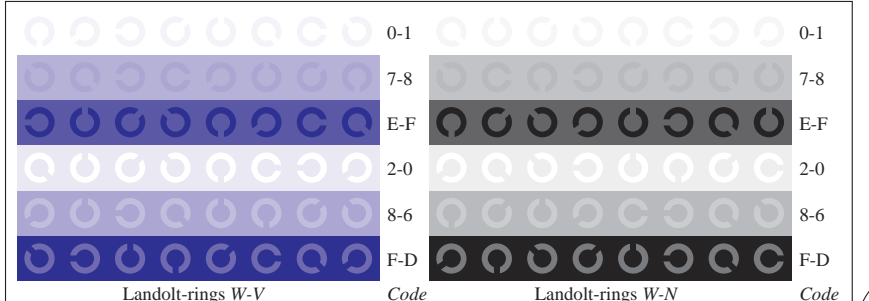
Picture D2: Radial gratings W-O, W-L, W-V, W-N, and W-Z; PS operator *cmly0\* setcmlycolor* (only)



Picture D6: Landolt-rings W-O and W-L; Use of PS operator *cmly0\* setcmlycolor* (only)



Picture D3: 14 CIE-test colours and 2 + 16 grey steps; Use of PS operator *cmly0\* setcmlycolor* (only)



Picture D7: Landolt-rings W-V and W-N; Use of PS operator *cmly0\* setcmlycolor* (only)