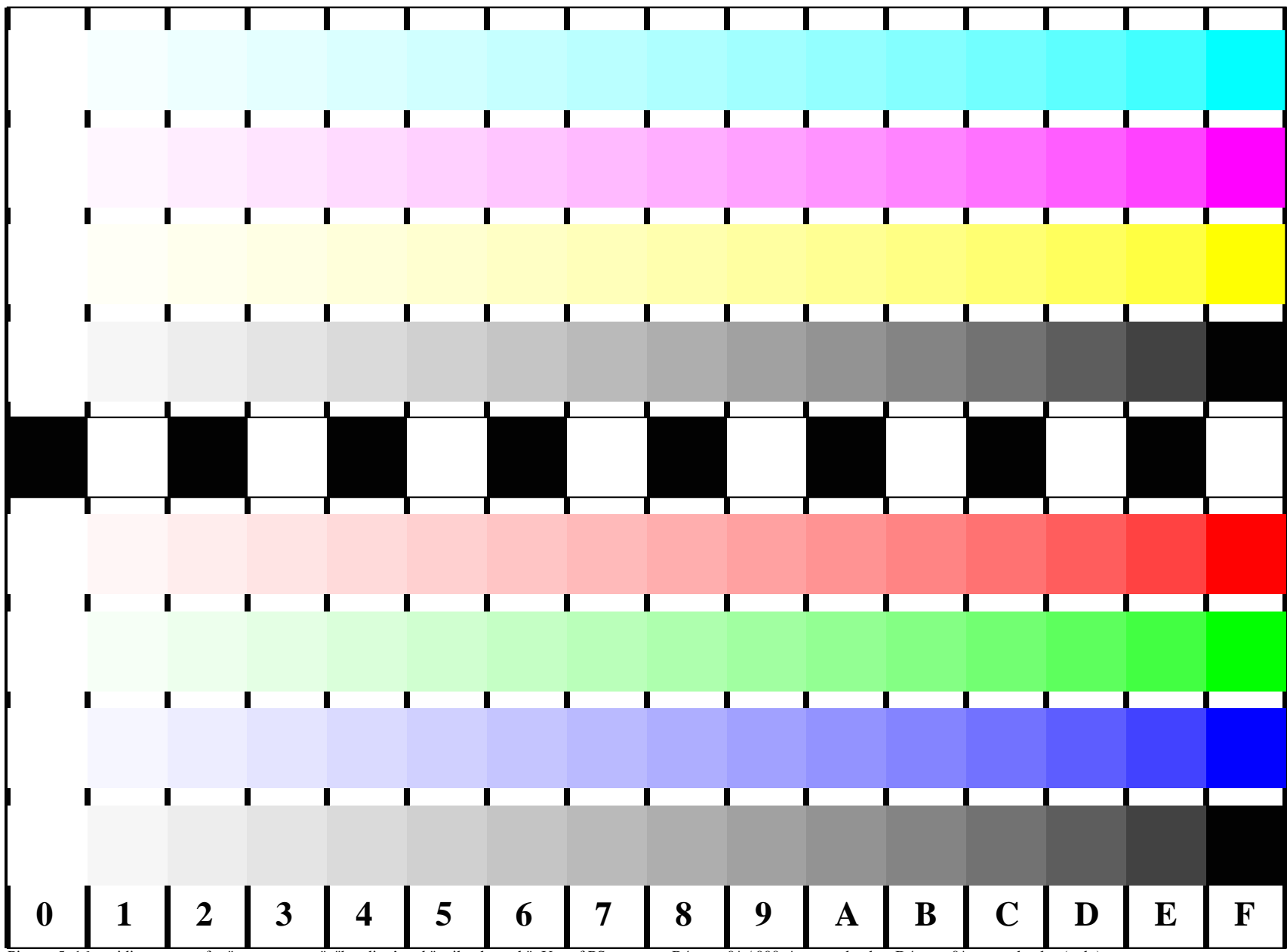


See for similar files: <http://www.ps.bam.de/BE16/>
 Technical information: <http://www.ps.bam.de>
 Version 2.0, io=0,3; iORS; oORS, CIELAB

BAM registration: 20040501-BE16/10Q/Q16E00FP.PS/.PDF BAM material: code=rh4ta
 application for relative yield and reproduction properties of chromatic printers
 /BE16 Form: I/3, Serie: I/1, Page: 1 Page count: 1



Picture 5: 16 equidistant steps for "measurement", "banding" and "strike through"; Use of PS operator; B4: cmy0* / 000n* setcmycolor; D4: cmy0* setcmycolor (only)

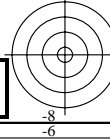
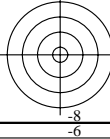
BAM-test chart no. BE16

Step: S2

input: cmy0* / 000n* setcmycolor

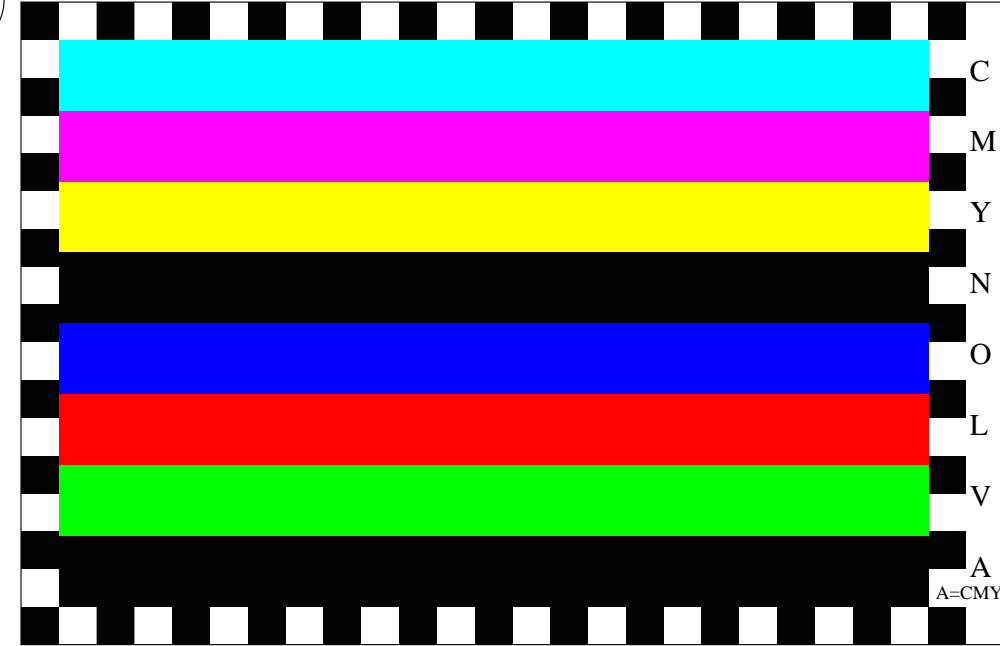
Color reproduction properties of ISO/IEC TR 19797 and 24705

output: olv* / www* setrgbcolor

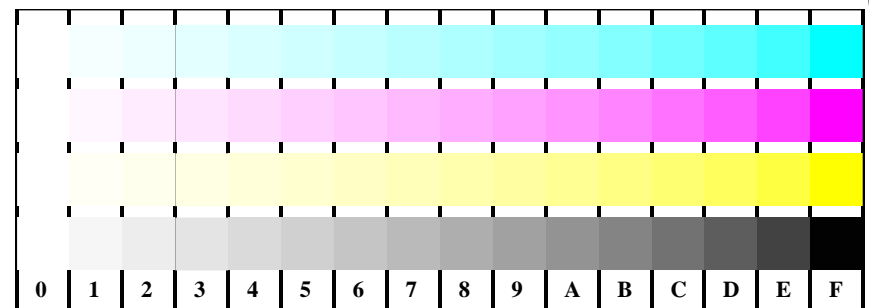


See for similar files: <http://www.ps.bam.de/BE16/>
 Technical information: <http://www.ps.bam.de/BE16/>
 Version 2.0, io=0,3; iORS; oORS, CIELAB

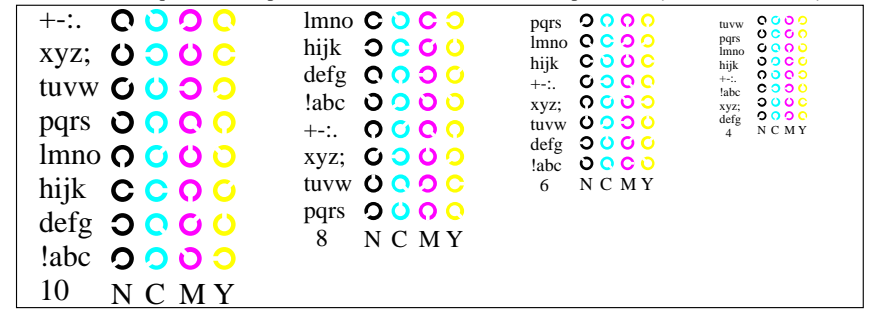
BAM registration: 20040501-BE16/10Q/Q16E01FP.PS/.PDF BAM material: code=rh4ta
 application for relative yield and reproduction properties of chromatic printers
 /BE16/ Form: 2/3, Seite: 1/1, Page: 2 Page count: 2



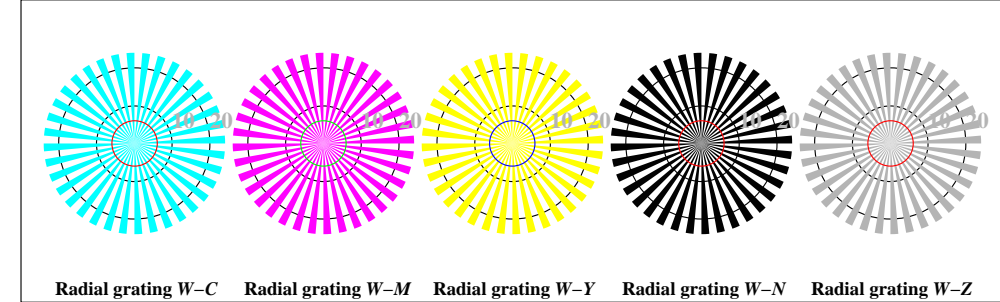
Picture B1: Colours CMYKOLVA for homogeneity and ghost images; PS operator $cm\dot{y}0^*/000n^* setcmykcolor$



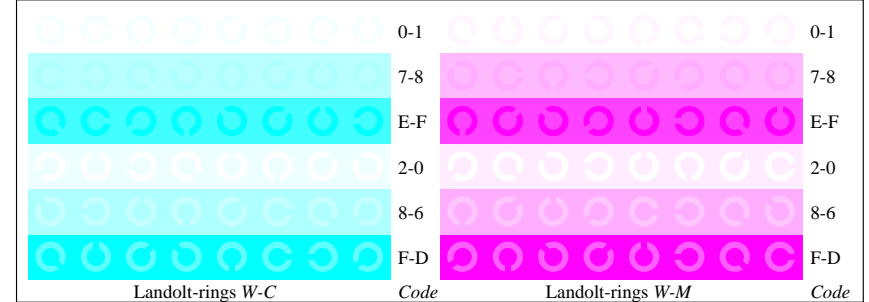
Picture B4: 16 equidistant steps W-C, W-M, W-Y and W-N; PS operator $cm\dot{y}0^*/000n^* setcmykcolor$



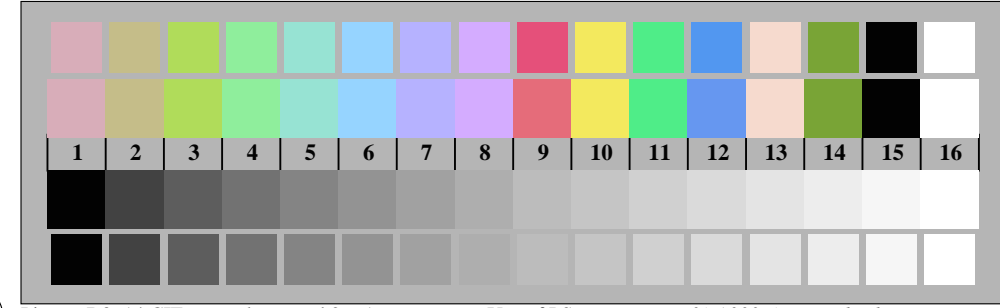
Picture B5: Script and Landolt-rings N, M, C and Y; Use of PS operator $cm\dot{y}0^*/000n^* setcmykcolor$



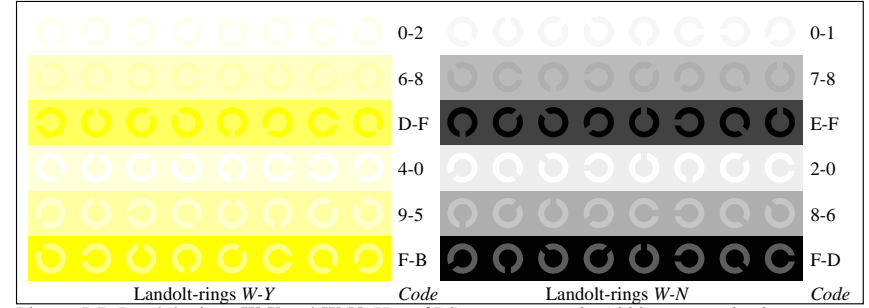
Picture B2: Radial gratings W-C, W-M, W-Y, W-N, and W-Z; PS operator $cm\dot{y}0^*/000n^* setcmykcolor$



Picture B6: Landolt-rings W-C and W-M; Use of PS operator $cm\dot{y}0^*/000n^* setcmykcolor$



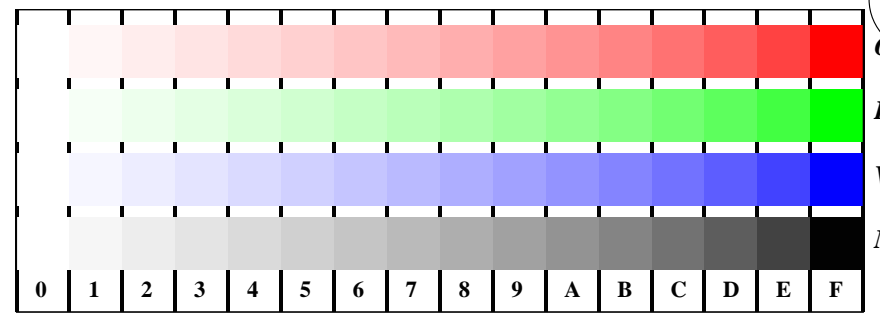
Picture B3: 14 CIE-test colours and 2 + 16 grey steps; Use of PS operator $cm\dot{y}0^*/000n^* setcmykcolor$



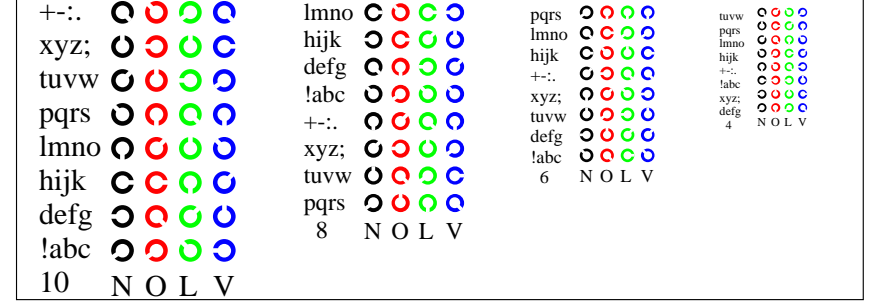
Picture B7: Landolt-rings W-Y and W-N; Use of PS operator $cm\dot{y}0^*/000n^* setcmykcolor$



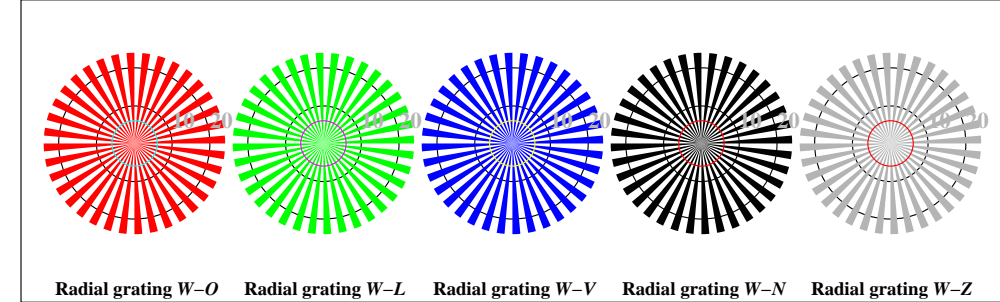
Picture D1: Colours CMYNOLVA_w for homogeneity and gost images; PS operator *cmly0*/000n* setcmkcolor*



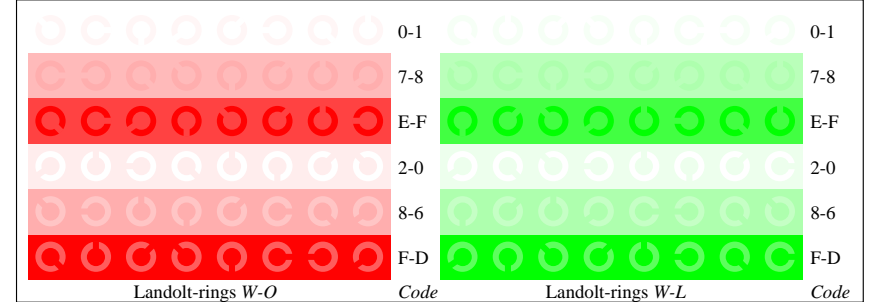
Picture D4: 16 equidistant steps W-O, W-L, W-V and W-N; Use of PS operator *cmly0* setcmkcolor* (only)



Picture D5: Script and Landolt-rings N, O, L and V; Use of PS operator *cmly0* setcmkcolor* (only)



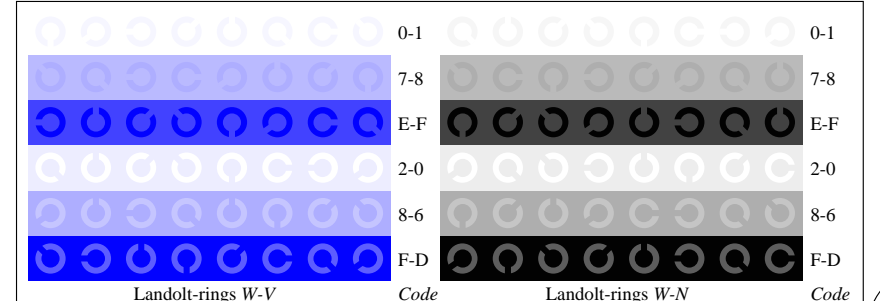
Picture D2: Radial gratings W-O, W-L, W-V, W-N, and W-Z; PS operator *cmly0* setcmkcolor* (only)



Picture D6: Landolt-rings W-O and W-L; Use of PS operator *cmly0* setcmkcolor* (only)



Picture D3: 14 CIE-test colours and 2 + 16 grey steps; Use of PS operator *cmly0* setcmkcolor* (only)



Picture D7: Landolt-rings W-V and W-N; Use of PS operator *cmly0* setcmkcolor* (only)