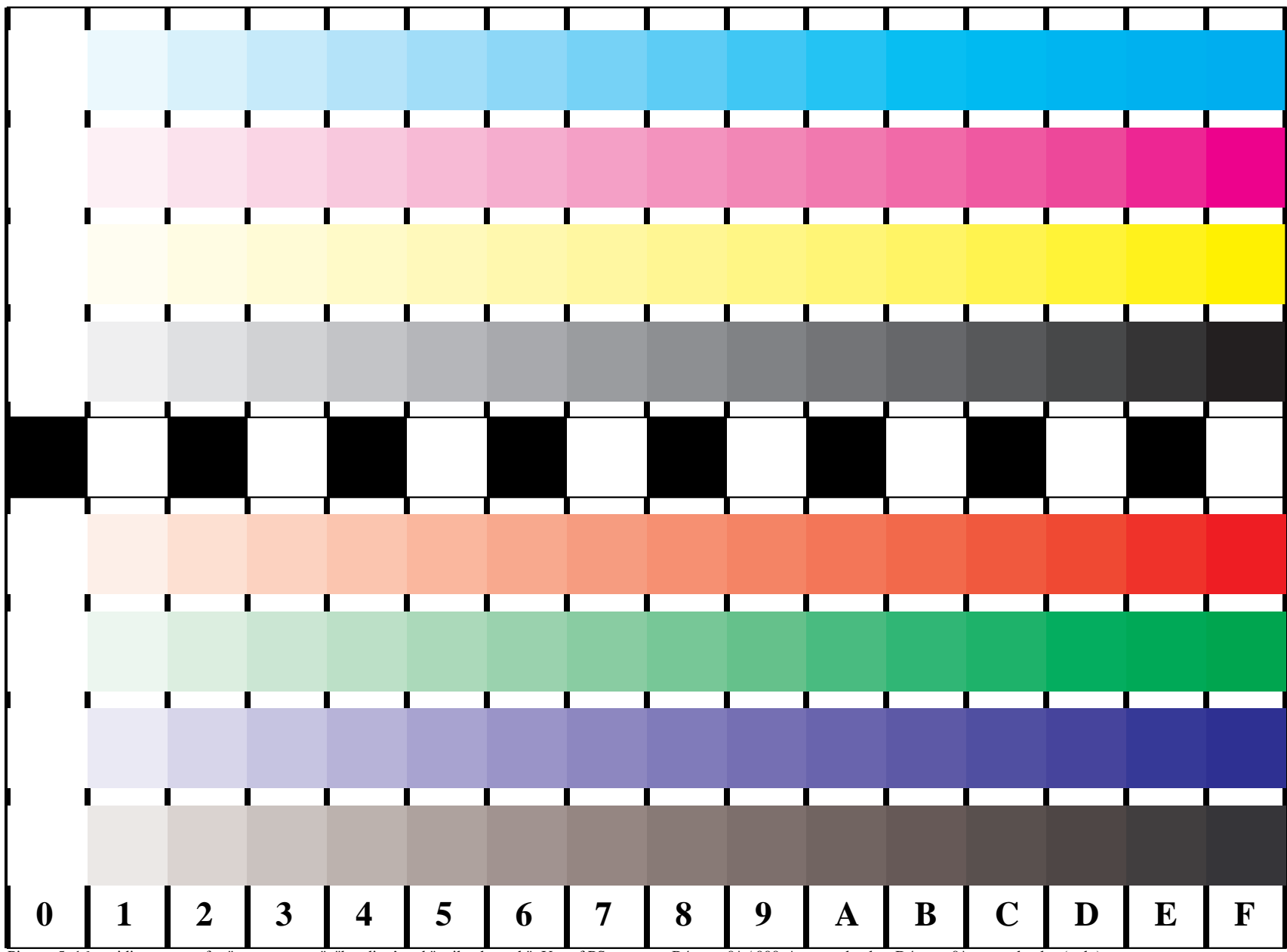


See for similar files: <http://www.ps.bam.de/BE16/>
 Technical information: <http://www.ps.bam.de> Version 2.0, io=0,0

BAM registration: 20040501-BE16/10Q/Q16E00NP.PS/.PDF BAM material: code=rh4ta
 application for relative yield and reproduction properties of chromatic printers
 /BE16 Form: I/3, Serie: I/1, Page: 1 Page count: 1



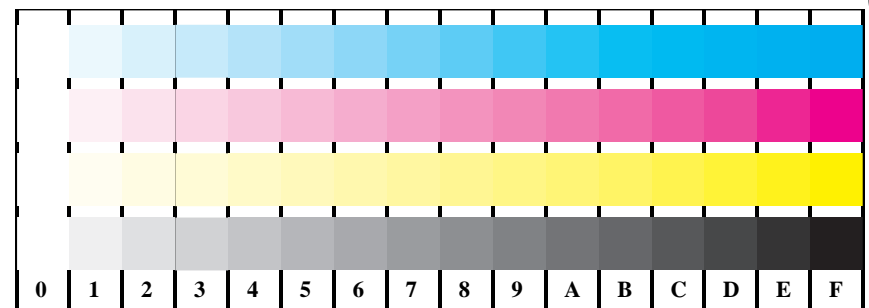
Picture 5: 16 equidistant steps for "measurement", "banding" and "strike through"; Use of PS operator; B4: $cmy0^* / 000n^*$ setcmycolor; D4: $cmy0^*$ setcmycolor (only)

See for similar files: <http://www.ps.bam.de/BE16/>
 Technical information: <http://www.ps.bam.de>
 Version 2.0, io=0,0

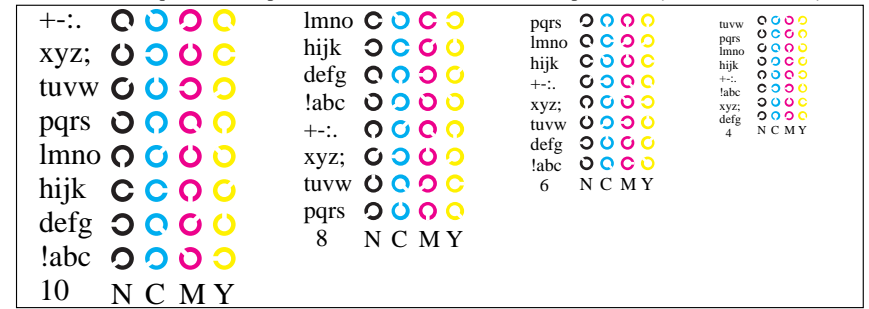
BAM registration: 20040501-BE16/10Q/Q16E01NP.PS/.PDF
 application for relative yield and reproduction properties of chromatic printers
 /BE16/ Form: 2/3, Seite: 1/1, Page: 2 Page count: 2



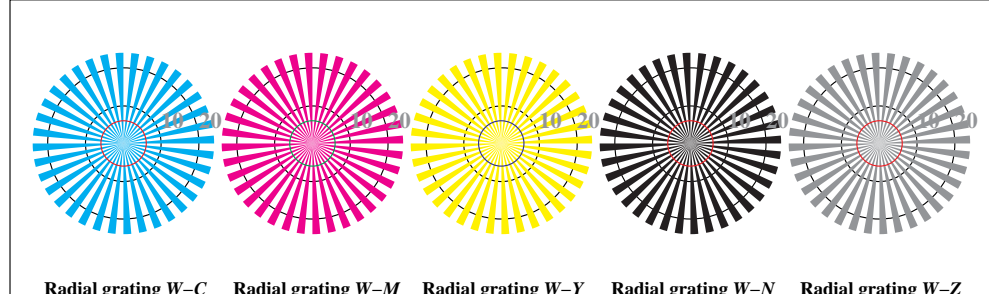
Picture B1: Colours CMYKOLVA for homogeneity and gost images; PS operator $cm\dot{y}0^*/000n^*$ setcmykcolor



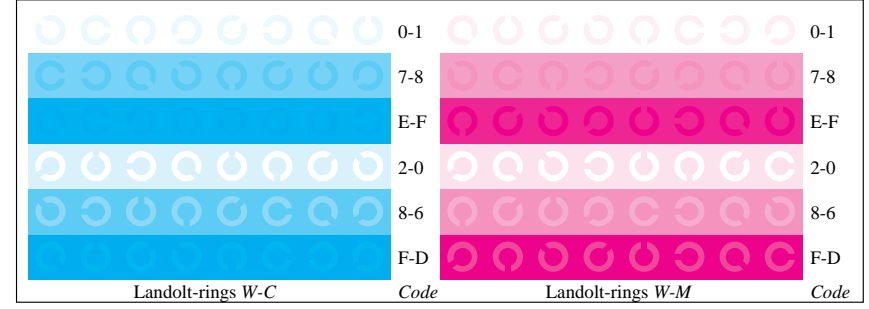
Picture B4: 16 equidistant steps W-C, W-M, W-Y and W-N; PS operator $cm\dot{y}0^*/000n^*$ setcmykcolor



Picture B5: Script and Landolt-rings N, M, C and Y; Use of PS operator $cm\dot{y}0^*/000n^*$ setcmykcolor



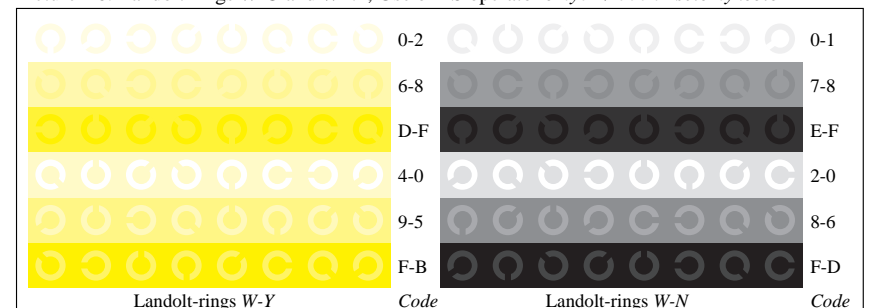
Picture B2: Radial gratings W-C, W-M, W-Y, W-N, and W-Z; PS operator $cm\dot{y}0^*/000n^*$ setcmykcolor



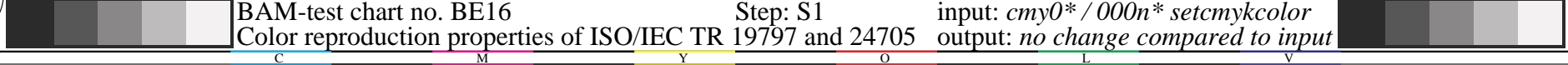
Picture B6: Landolt-rings W-C and W-M; Use of PS operator $cm\dot{y}0^*/000n^*$ setcmykcolor



Picture B3: 14 CIE-test colours and 2 + 16 grey steps; Use of PS operator $cm\dot{y}0^*/000n^*$ setcmykcolor



Picture B7: Landolt-rings W-Y and W-N; Use of PS operator $cm\dot{y}0^*/000n^*$ setcmykcolor



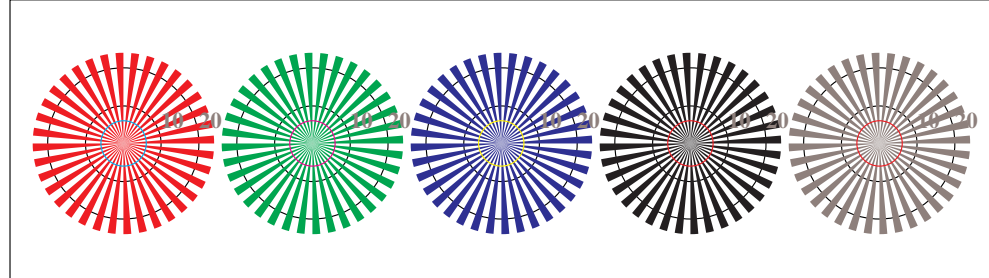
BAM-test chart no. BE16 Step: S1
 Color reproduction properties of ISO/IEC TR 19797 and 24705
 input: $cm\dot{y}0^*/000n^*$ setcmykcolor output: no change compared to input

See for similar files: <http://www.ps.bam.de/BE16/>
 Technical information: <http://www.ps.bam.de>
 Version 2.0, io=0,0

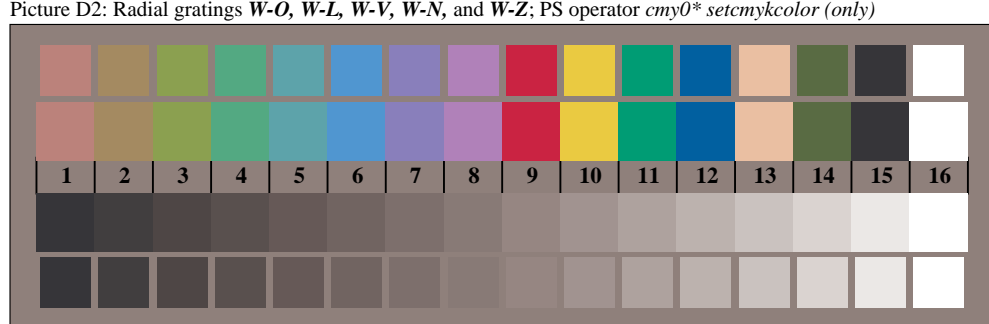
BAM registration: 20040501-BE16/10Q/Q16E02NP.PS/.PDF
 application for relative yield and reproduction properties of chromatic printers
 /BE16/ Form: 33, Seite: 1/1, Page: 3 Page count: 3



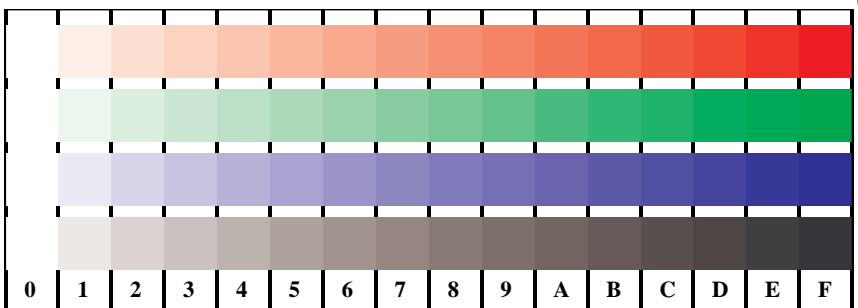
Picture D1: Colours CMYNOLVA_w for homogeneity and ghost images; PS operator *cmY0*/1000n* setcmYcolor* (only)



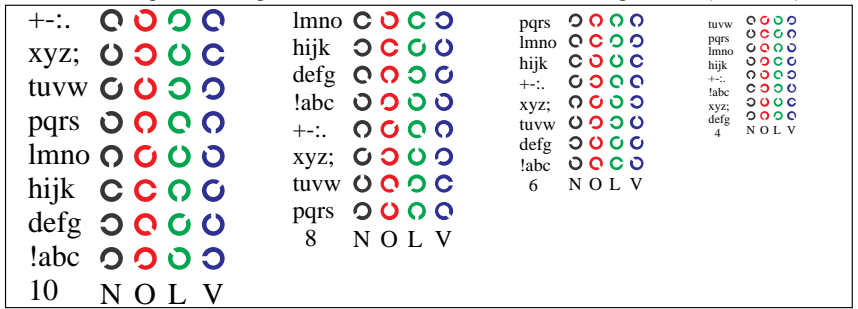
Picture D2: Radial gratings W-O, W-L, W-V, W-N, and W-Z; PS operator *cmY0* setcmYcolor* (only)



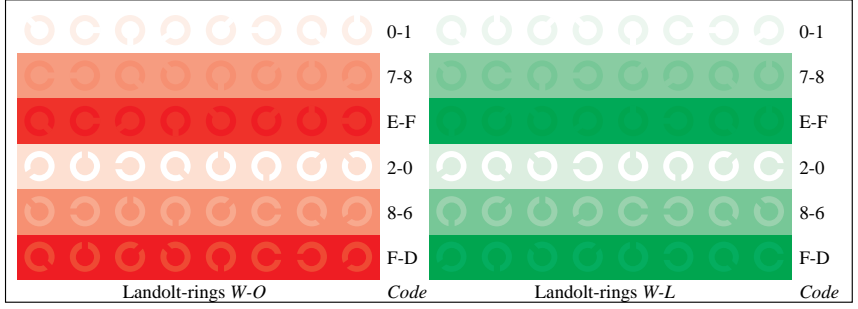
Picture D3: 14 CIE-test colours and 2 + 16 grey steps; Use of PS operator *cmY0* setcmYcolor* (only)



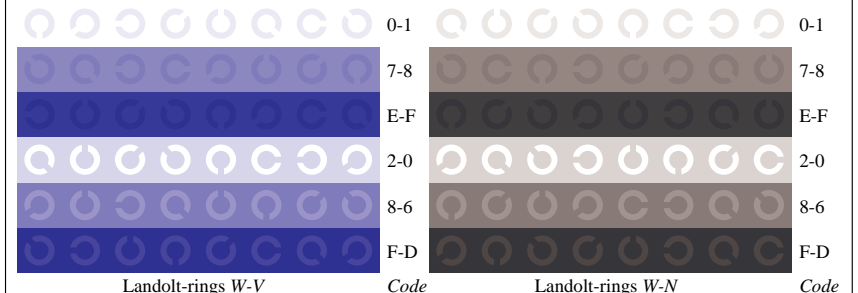
Picture D4: 16 equidistant steps W-O, W-L, W-V and W-N; Use of PS operator *cmY0* setcmYcolor* (only)



Picture D5: Script and Landolt-rings N, O, L and V; Use of PS operator *cmY0* setcmYcolor* (only)



Picture D6: Landolt-rings W-O and W-L; Use of PS operator *cmY0* setcmYcolor* (only)



Picture D7: Landolt-rings W-V and W-N; Use of PS operator *cmY0* setcmYcolor* (only)