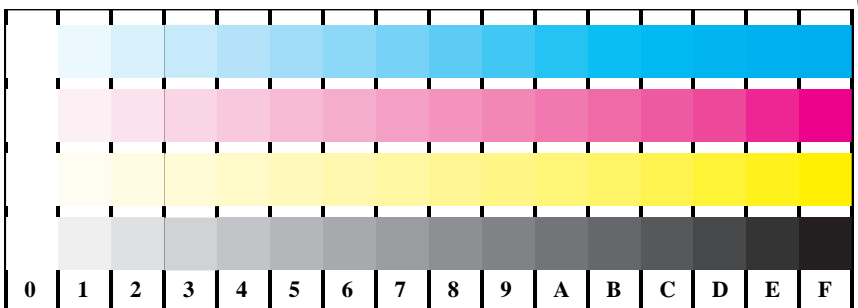


See for similar files: <http://www.ps.bam.de/BE16/>
Technical information: <http://www.ps.bam.de>

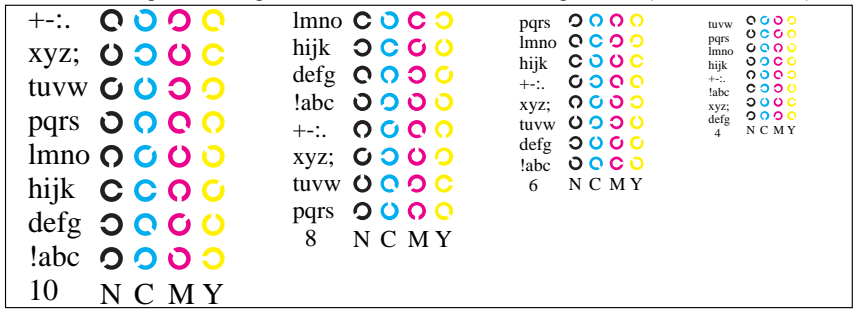
BAM registration: 20040501-BE16/10Q/Q16E01SP.PS/.PDF
application for relative yield and reproduction properties of chromatic printers



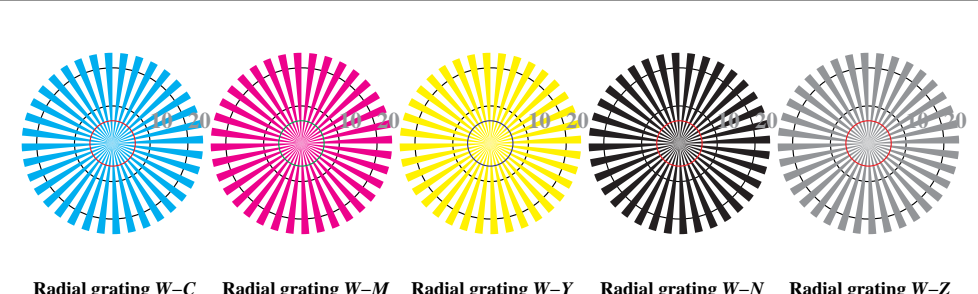
Picture B1: Colours CMYKOLVA for homogeneity and gost images; PS operator `cmy0*/000n* setcmykcolor`



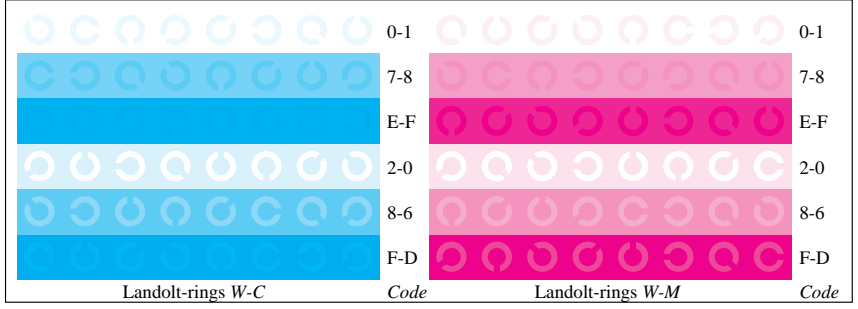
Picture B4: 16 equidistant steps W-C, W-M, W-Y and W-N; PS operator `cmy0*/000n* setcmykcolor`



Picture B5: Script and Landolt-rings N, M, C and Y; Use of PS operator `cmy0*/000n* setcmykcolor`



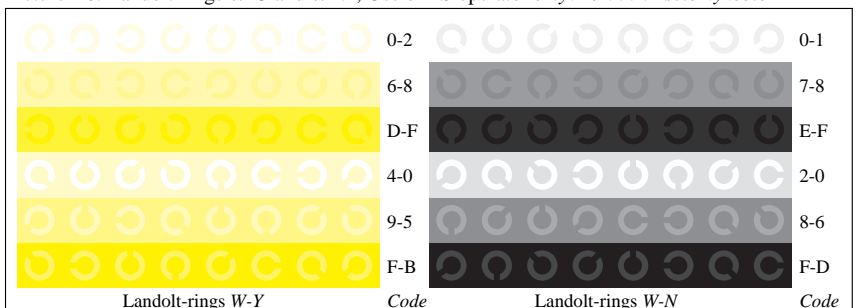
Picture B2: Radial gratings W-C, W-M, W-Y, W-N, and W-Z; PS operator `cmy0*/000n* setcmykcolor`



Picture B6: Landolt-rings W-C and W-M; Use of PS operator `cmy0*/000n* setcmykcolor`



Picture B3: 14 CIE-test colours and 2 + 16 grey steps; Use of PS operator `cmy0*/000n* setcmykcolor`



Picture B7: Landolt-rings W-Y and W-N; Use of PS operator `cmy0*/000n* setcmykcolor`

See for similar files: <http://www.ps.bam.de/BE16/>
Technical information: <http://www.ps.bam.de/BE16/>

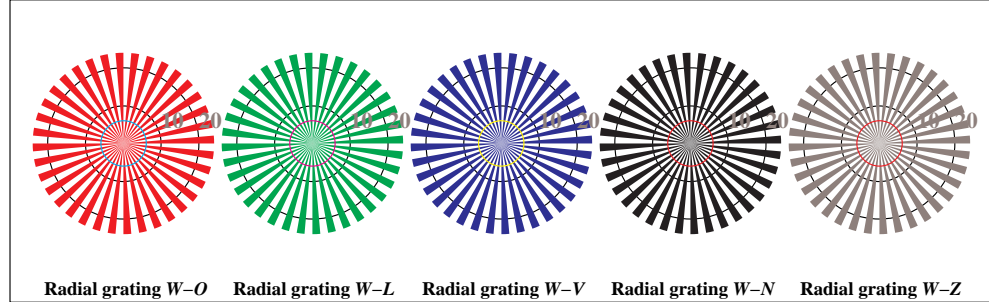
Version 2.0, io=0,0?

BAM registration: 20040501-BE16/10Q/Q16E02SP.PS/.PDF
application for relative yield and reproduction properties of chromatic printers

BAM material: code=rh4ta
/BE16/ Form: 33, Serie: 1/1, Page: 3 Page count: 3



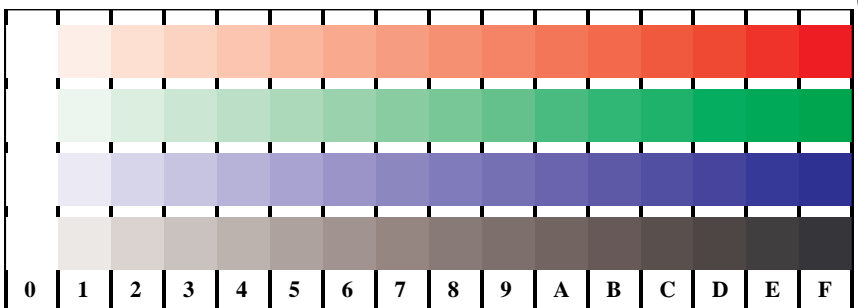
Picture D1: Colours CMYNOLVA_w for homogeneity and gost images; PS operator *cmY0*/1000n* setcmykcolor*



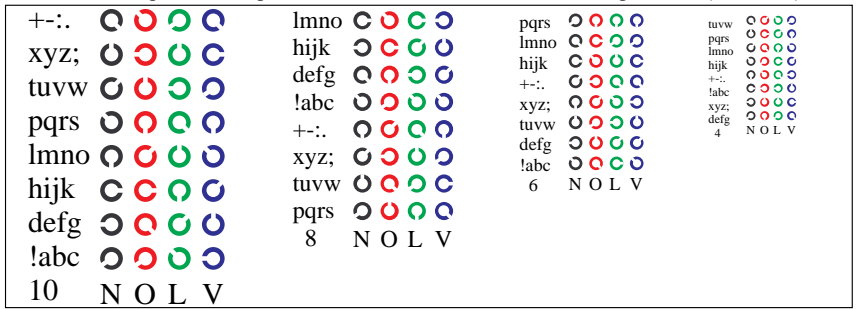
Picture D2: Radial gratings W-O, W-L, W-V, W-N, and W-Z; PS operator *cmY0* setcmykcolor* (only)



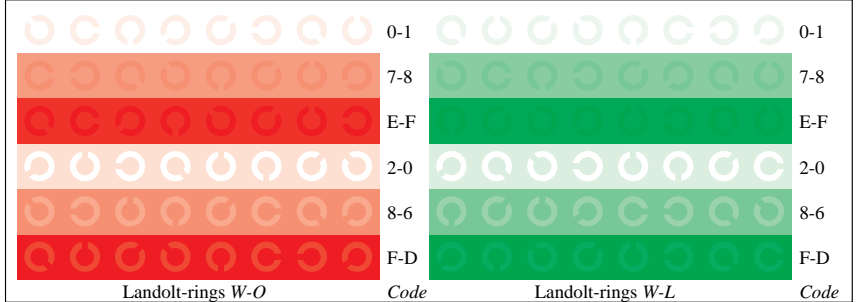
Picture D3: 14 CIE-test colours and 2 + 16 grey steps; Use of PS operator *cmY0* setcmykcolor* (only)



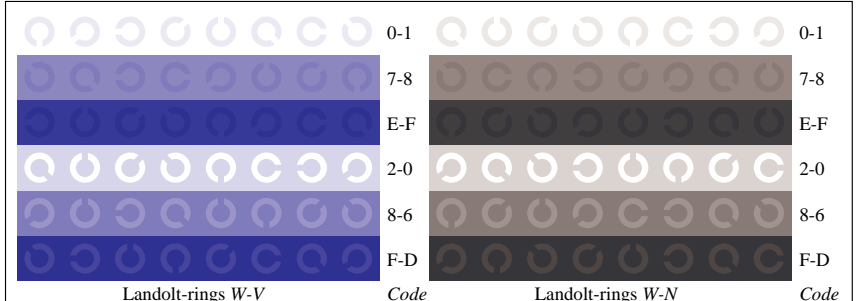
Picture D4: 16 equidistant steps W-O, W-L, W-V and W-N; Use of PS operator *cmY0* setcmykcolor* (only)



Picture D5: Script and Landolt-rings N, O, L and V; Use of PS operator *cmY0* setcmykcolor* (only)



Picture D6: Landolt-rings W-O and W-L; Use of PS operator *cmY0* setcmykcolor* (only)



Picture D7: Landolt-rings W-V and W-N; Use of PS operator *cmY0* setcmykcolor* (only)