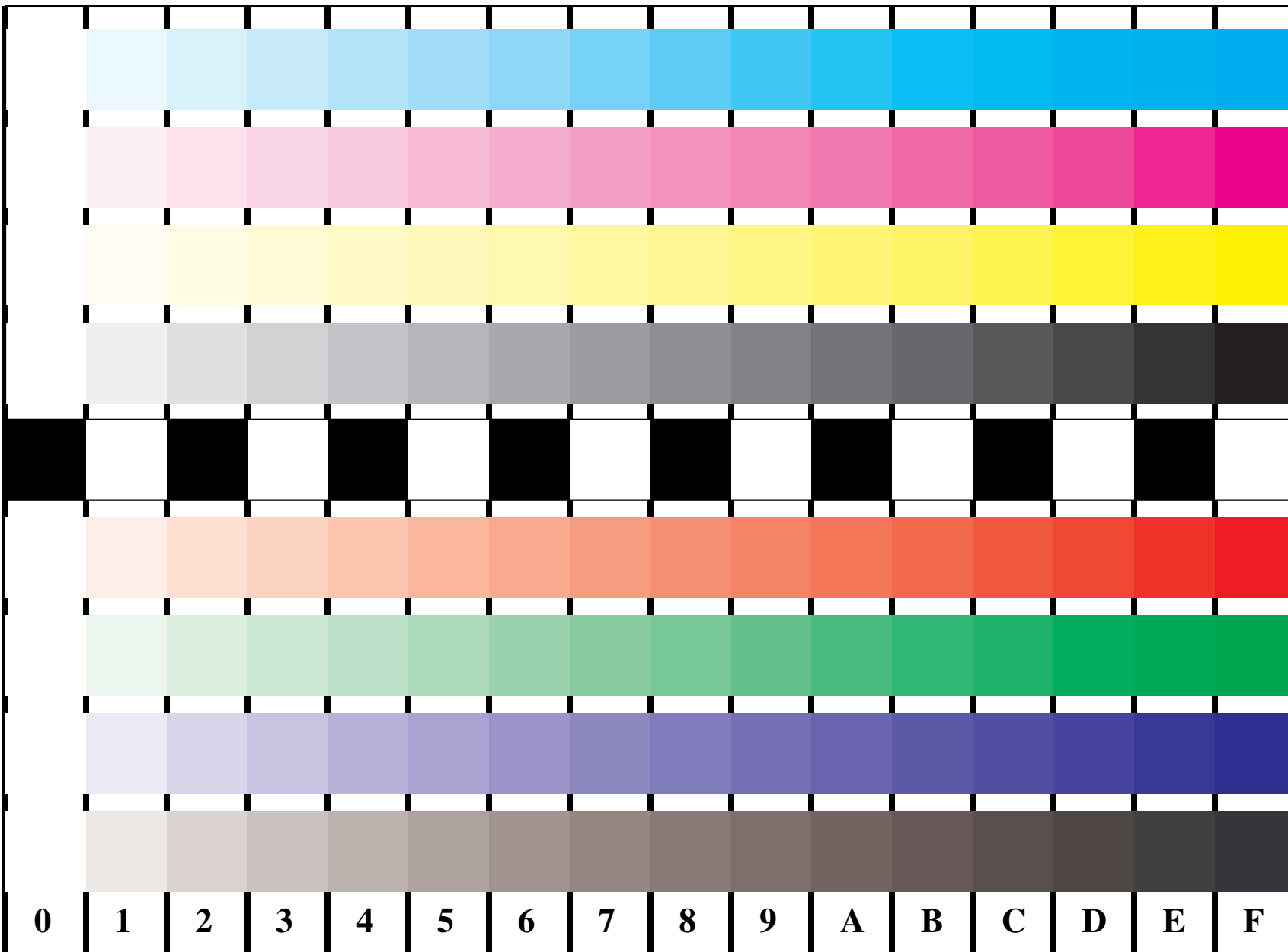


See for similar files: <http://www.ps.bam.de/BE16/>
Technical information: <http://www.ps.bam.de/BE16/>
Version 2.0, io=0,0?

BAM registration: 20040501-BE16/10Q/Q16E00SP.PS/.PDF BAM material: code=rhadata
application for relative yield and reproduction properties of chromatic printers
/BE16 Form: I/3, Serie: I/1, Page: 1 Page count: 1



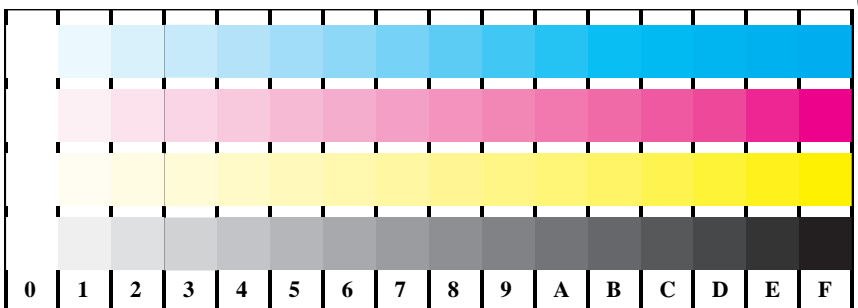
Picture 5: 16 equidistant steps for "measurement", "banding" and "strike through"; Use of PS operator; B4: cmy0* / 000n* setcmycolor; D4: cmy0* setcmycolor (only)

See for similar files: <http://www.ps.bam.de/BE16/>
Technical information: <http://www.ps.bam.de>

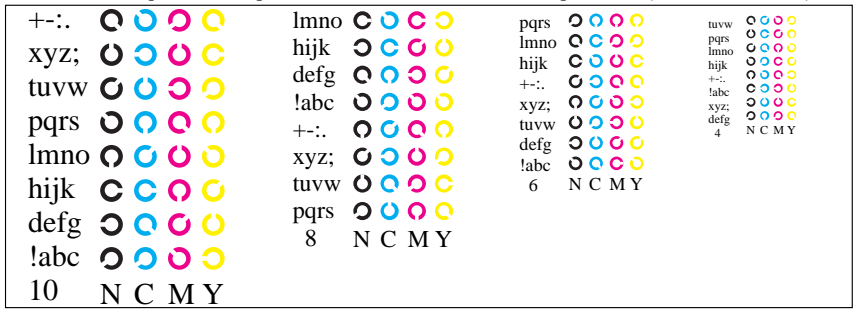
BAM registration: 20040501-BE16/10Q/Q16E01SP.PS/.PDF
application for relative yield and reproduction properties of chromatic printers



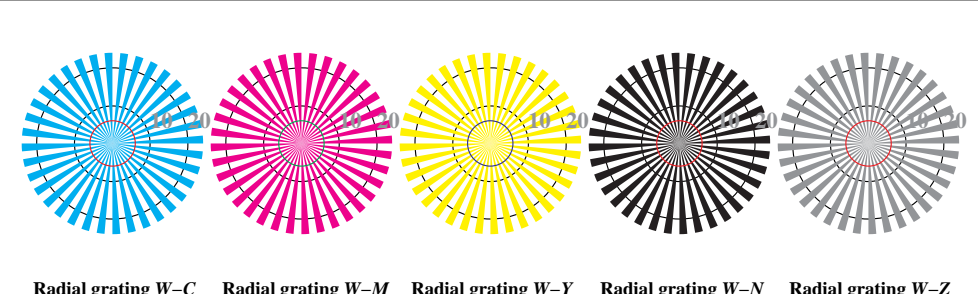
Picture B1: Colours CMYKOLVA for homogeneity and gost images; PS operator `cmY0*/000n* setcmYcolor`



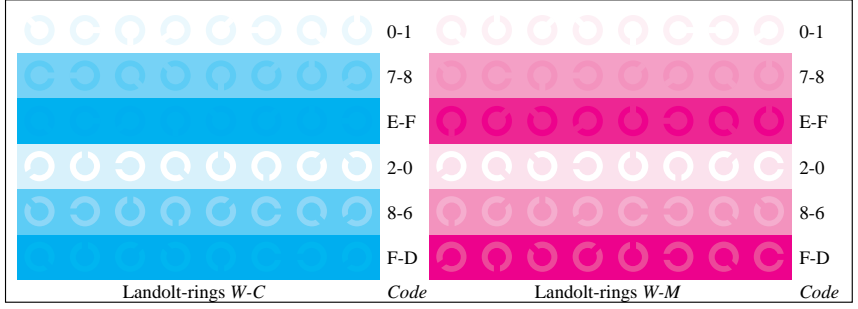
Picture B4: 16 equidistant steps W-C, W-M, W-Y and W-N; PS operator `cmY0*/000n* setcmYcolor`



Picture B5: Script and Landolt-rings N, M, C and Y; Use of PS operator `cmY0*/000n* setcmYcolor`



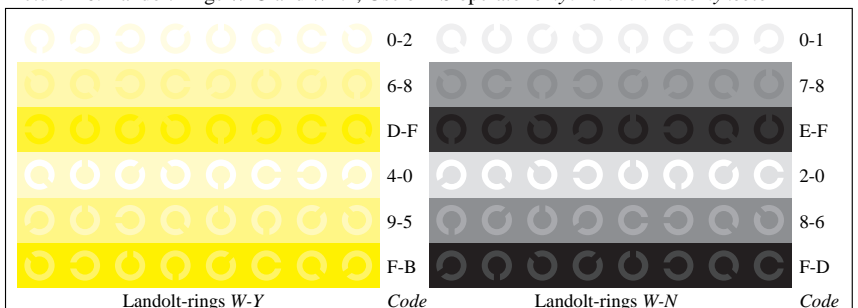
Picture B2: Radial gratings W-C, W-M, W-Y, W-N, and W-Z; PS operator `cmY0*/000n* setcmYcolor`



Picture B6: Landolt-rings W-C and W-M; Use of PS operator `cmY0*/000n* setcmYcolor`



Picture B3: 14 CIE-test colours and 2 + 16 grey steps; Use of PS operator `cmY0*/000n* setcmYcolor`



Picture B7: Landolt-rings W-Y and W-N; Use of PS operator `cmY0*/000n* setcmYcolor`

BAM-test chart no. BE16 Step: S2
 Color reproduction properties of ISO/IEC TR 19797 and 24705 input: `cmY0*/000n* setcmYcolor` output: *Startup (S) data dependend*

See for similar files: <http://www.ps.bam.de/BE16/>
Technical information: <http://www.ps.bam.de/BE16/>

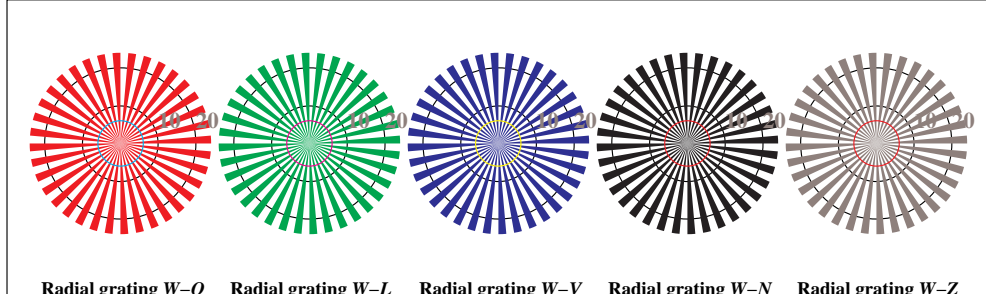
Version 2.0, io=0,0?

BAM registration: 20040501-BE16/10Q/Q16E02SP.PS/.PDF
application for relative yield and reproduction properties of chromatic printers

BAM material: code=rh4ta
/BE16/ Form: 33, Serie: 1/1, Page: 3
Page count: 3



Picture D1: Colours CMYNOLVA_w for homogeneity and gost images; PS operator *cmY0*/000n* setcmykcolor*



Picture D2: Radial gratings W-O, W-L, W-V, W-N, and W-Z; PS operator *cmY0* setcmykcolor* (only)



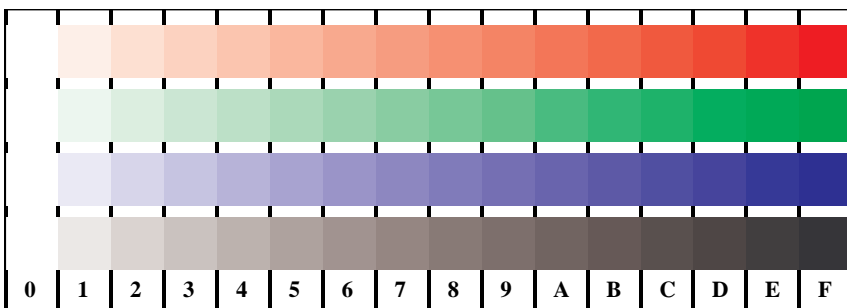
Picture D3: 14 CIE-test colours and 2 + 16 grey steps; Use of PS operator *cmY0* setcmykcolor* (only)



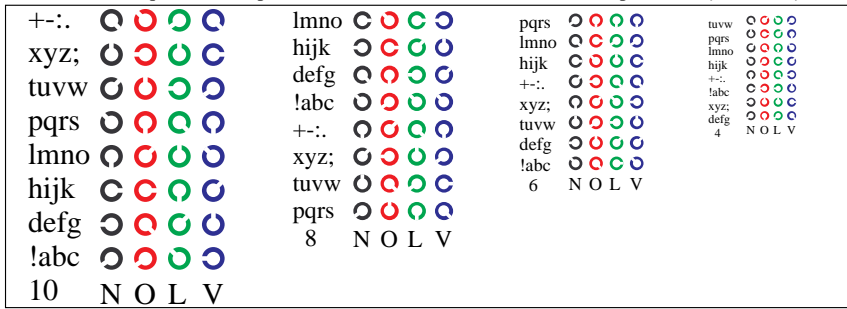
BAM-test chart no. BE16
Color reproduction properties of ISO/IEC TR 19797 and 24705

Step: S2

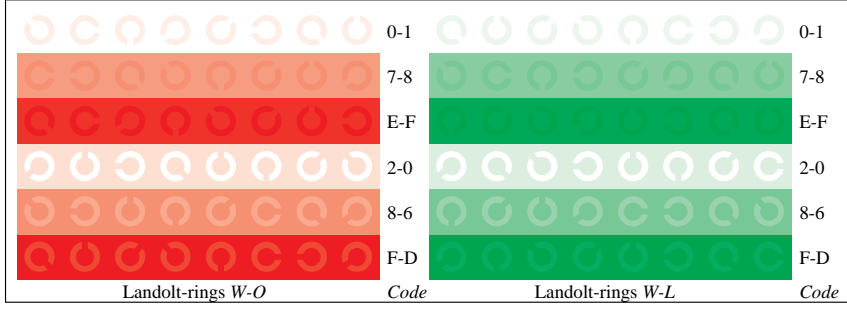
input: *cmY0*/000n* setcmykcolor*
output: *Startup (S) data dependend*



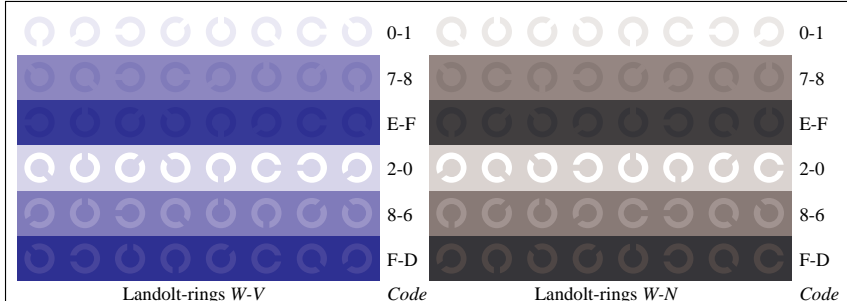
Picture D4: 16 equidistant steps W-O, W-L, W-V and W-N; Use of PS operator *cmY0* setcmykcolor* (only)



Picture D5: Script and Landolt-rings N, O, L and V; Use of PS operator *cmY0* setcmykcolor* (only)



Picture D6: Landolt-rings W-O and W-L; Use of PS operator *cmY0* setcmykcolor* (only)



Picture D7: Landolt-rings W-V and W-N; Use of PS operator *cmY0* setcmykcolor* (only)

