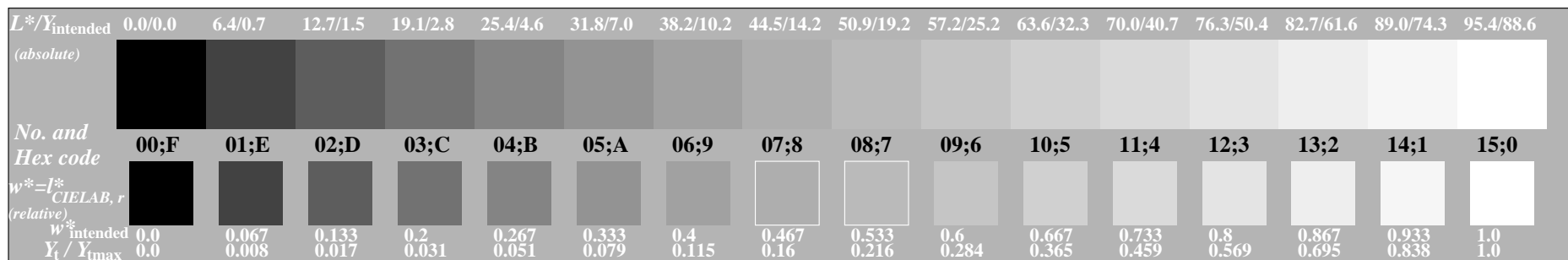


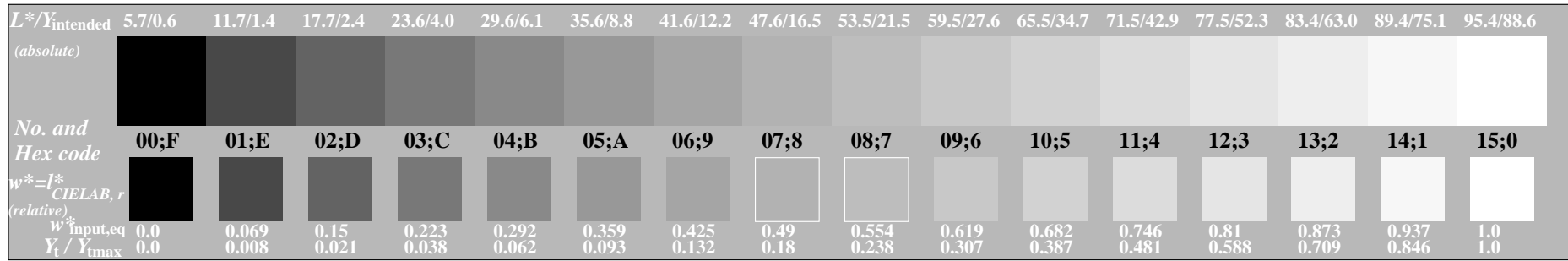
See for similar files: <http://www.ps.bam.de/CE61/>
 Technical information: <http://www.ps.bam.de/9241>

Version 2.0, io=1.1, CIEXYZ, 2.0 exp



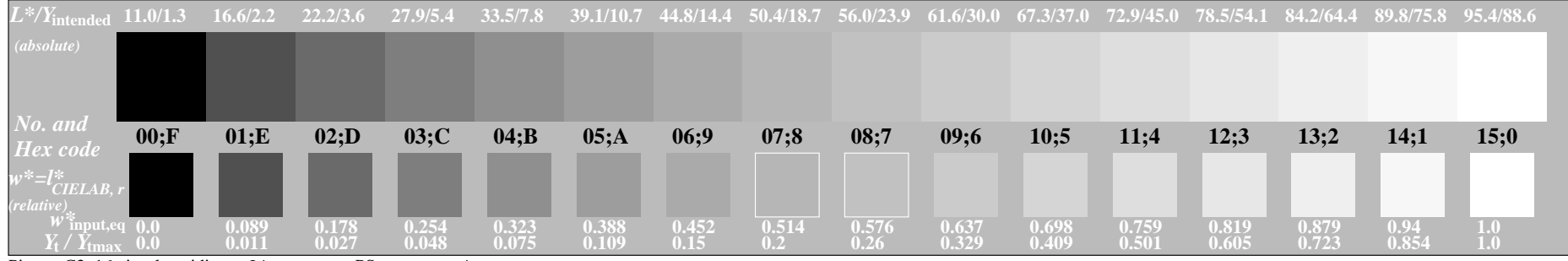
Picture C3: 16 visual equidistant L^* -grey steps; PS operator: $w^*_{setgray}$

$Y_w:Y_n = 88.6 : 0.6$



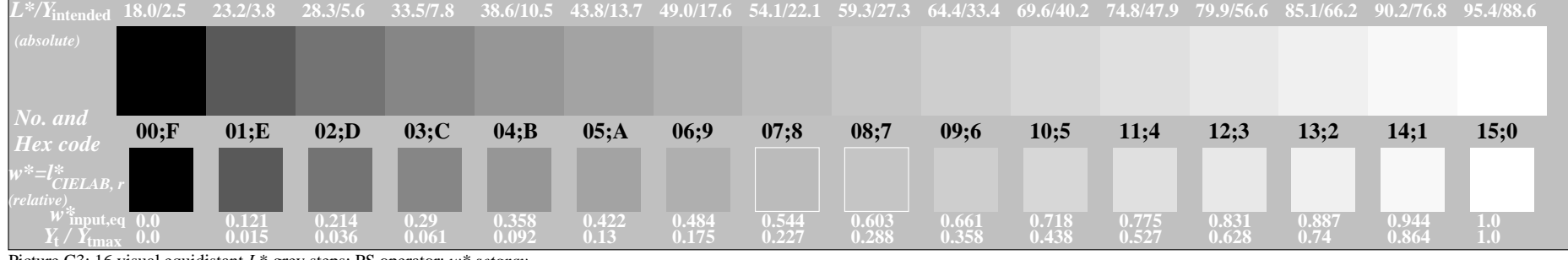
Picture C3: 16 visual equidistant L^* -grey steps; PS operator: $w^*_{setgray}$

$Y_w:Y_n = 88.6 : 1.3$



Picture C3: 16 visual equidistant L^* -grey steps; PS operator: $w^*_{setgray}$

$Y_w:Y_n = 88.6 : 2.5$



Picture C3: 16 visual equidistant L^* -grey steps; PS operator: $w^*_{setgray}$

$L^*_w:L^*_n = 95.4 : 5.7$

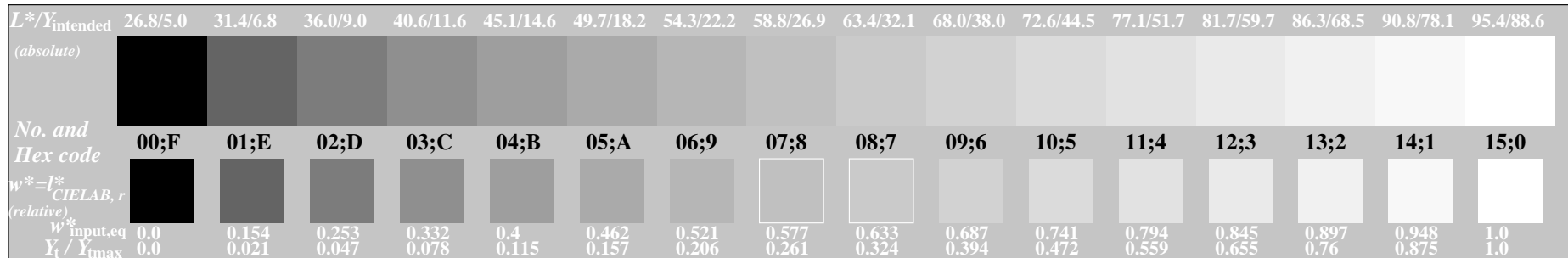
$L^*_w:L^*_n = 95.4 : 11.0$

$L^*_w:L^*_n = 95.4 : 18.0$

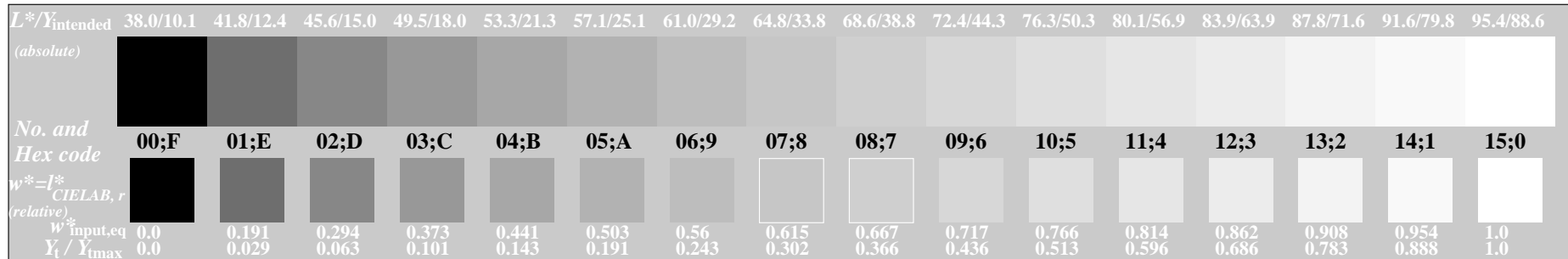
See for similar files: <http://www.ps.bam.de/CE61/>
 Technical information: <http://www.ps.bam.de/9241>

Version 2.0, io=1,1, CIEXYZ, 2.0 exp

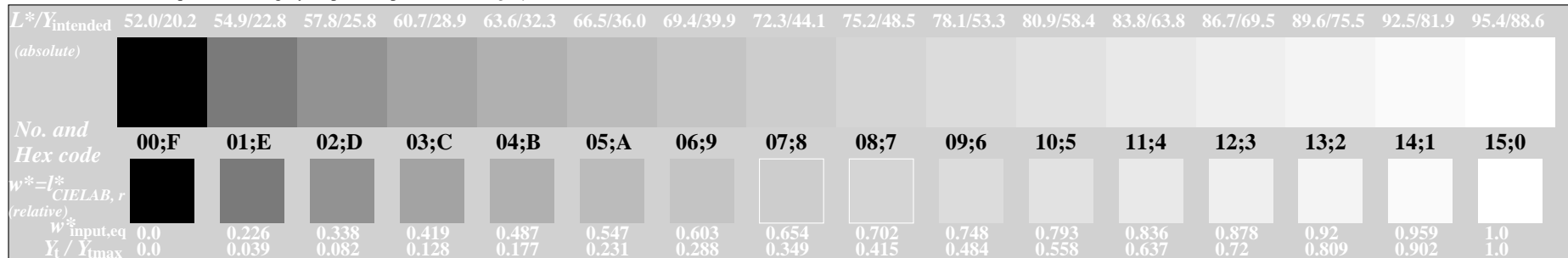
BAM registration: 20040101-CE61/10Q/Q61E40FP.PS/.PDF BAM material: code=rhadata
 Application for achromatic display output with CIELAB contrast range



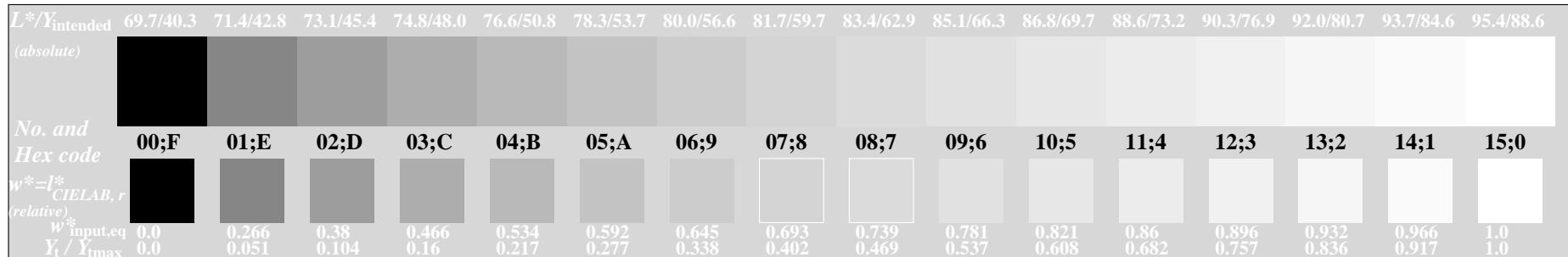
Picture C3: 16 visual equidistant L^* -grey steps; PS operator: $w^*_{setgray}$



Picture C3: 16 visual equidistant L^* -grey steps; PS operator: $w^*_{setgray}$



Picture C3: 16 visual equidistant L^* -grey steps; PS operator: $w^*_{setgray}$



Picture C3: 16 visual equidistant L^* -grey steps; PS operator: $w^*_{setgray}$