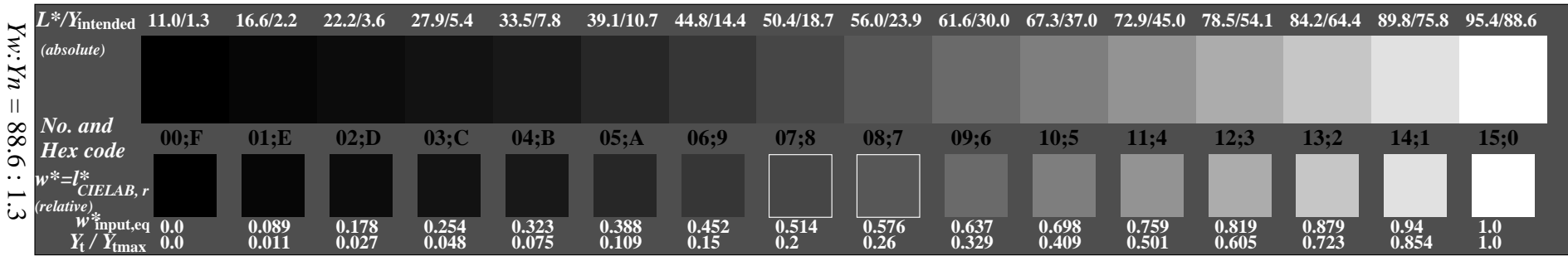
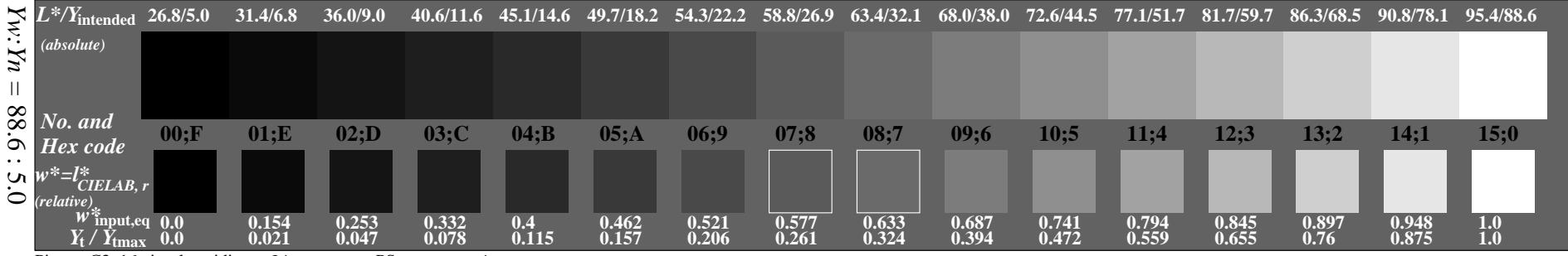


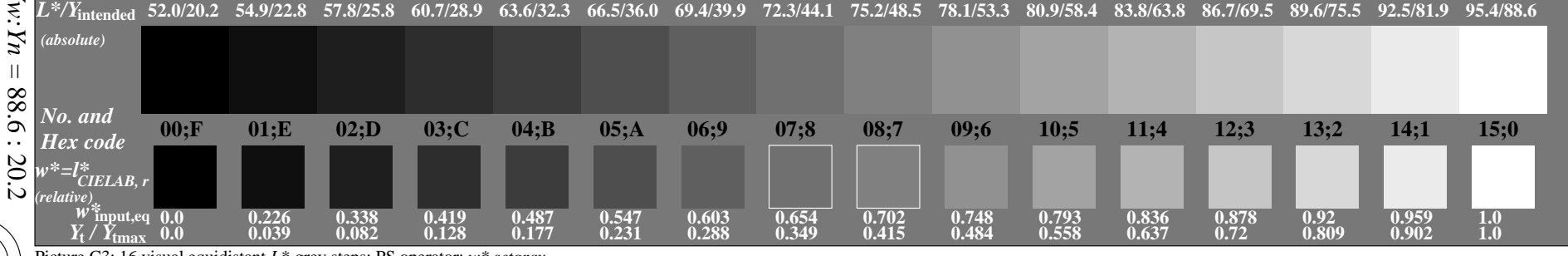
Picture C3: 16 visual equidistant  $L^*$ -grey steps; PS operator:  $w^*$  setgray



Picture C3: 16 visual equidistant  $L^*$ -grey steps; PS operator:  $w^*$  setgray



Picture C3: 16 visual equidistant  $L^*$ -grey steps; PS operator:  $w^*$  setgray



Picture C3: 16 visual equidistant  $L^*$ -grey steps; PS operator:  $w^*$  setgray

