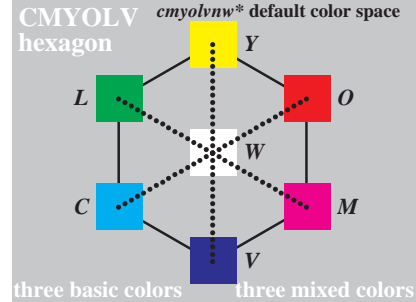
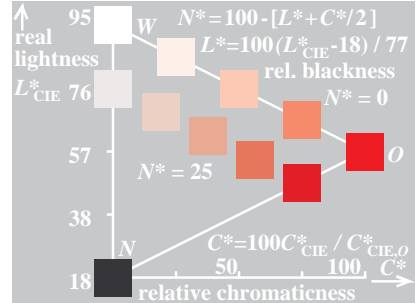


Technical information: http://o2.ps.bam.de

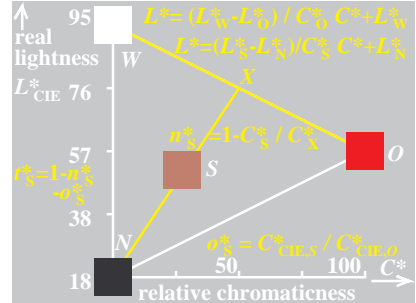
Image file version 1.4, 20010101, D8630E00



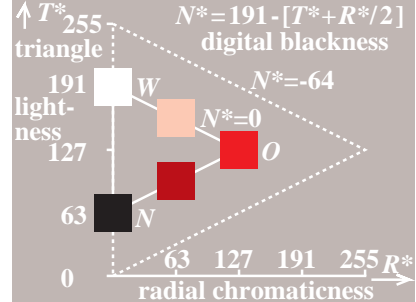
E8630-1, 16step test chart colours in hexagon



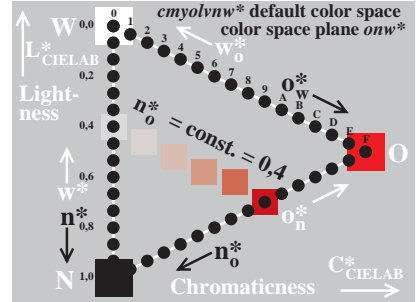
E8630-3, Colours of equal blackness N*



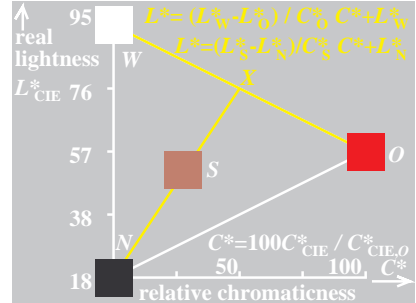
E8630-5, Calculation of triangle coordinates



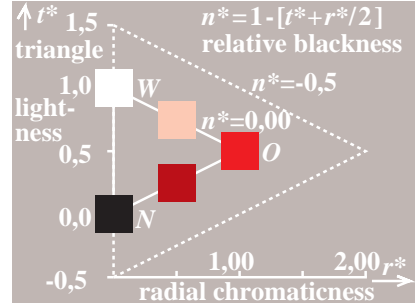
E8630-7, Digital triangle coordinates: 7/8 bit



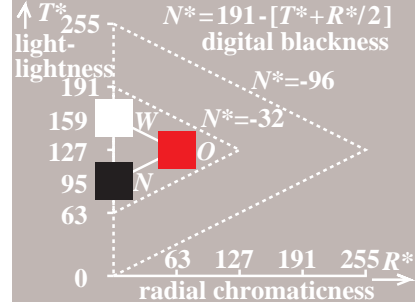
E8630-2, 16step test chart colours of hue O



E8630-4, Calculation of triangle coordinates



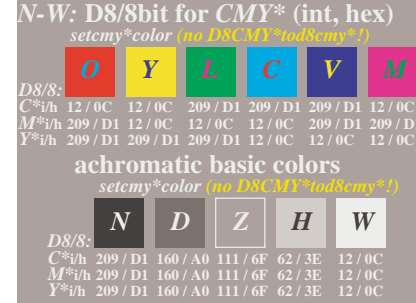
E8630-6, Relative triangle coordinates



E8630-8, Digital triangle coordinates: 6/8bit



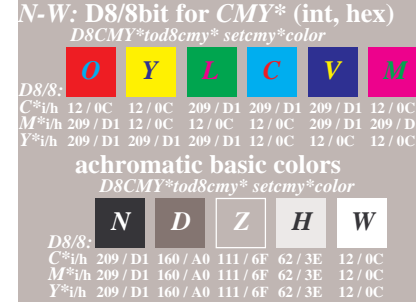
E8631-1, digital data d8/8bit sgcode *cmym**



E8631-3, Digital data D8/8bit SGcode *CMY**



E8631-5, digital data d7/8bit mgcode *cmym**



E8631-2, Digital data D8/8bit SGcode *CMY**



E8631-4, digital data d7/8bit mgcode *cmym**

i	CMY*-255-OLV*	cmym*-255-olv*	cmym*-255-olv**	olv*-255-olv**
1	209	209	255	255
2	196	196	196	238
3	183	183	183	221
4	170	170	170	204
5	156	156	156	187
6	143	143	143	170
7	130	130	130	153
8	117	117	117	136
9	104	104	104	119
10	91	91	91	102
11	78	78	78	85
12	65	65	65	68
13	51	51	51	51
14	38	38	38	34
15	25	25	25	17
16	12	12	12	0

E8631-6, *CMY**, *cmym**, *cmym**, *olv**: slide film



E8631-7, *olv*_ad**; slide film, exposure +0,0



E8631-8, *olv*_ad** slide film, exposure +0,0

BAM registration: 20010101-D8630E00

BAM-Reference material: code=rh4ra-D8630E00