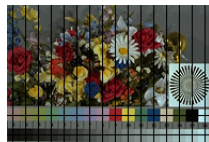
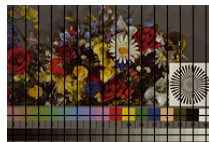
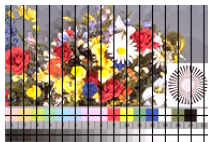
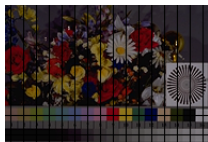


<http://farbe.li.tu-berlin.de/DE85/DE85L0N1.TXT> /PS; start output
N: no 3D-linearization (OL) in file (F) or PS-startup (S), page 1/1

see similar files: <http://farbe.li.tu-berlin.de/DE85/DE85L0N1.TXT>
technical information: <http://farbe.li.tu-berlin.de/~farbmetrik/>



TUB-test chart DE85; Photo CD: raw and linearized scan with and without grid of the reflective test chart according to ISO/IEC 15775

input: *w/rgb/cmyk* → *rgb*
output: no change

TUB registration: 20190201-DE85/DE85L0N1.TXT /PS
application for measurement of display or print output

TUB material: code=rh4da