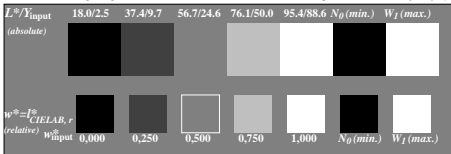
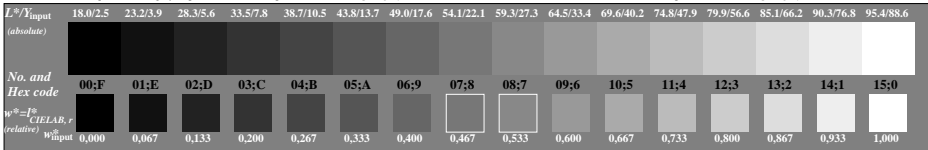


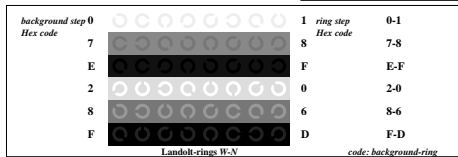
Picture C1: Radial gratings (Siemens-stars) N-W, W-N, N-Z and W-Z; PS operator: $w^*lin\ 1.0\ exp\ setgray$



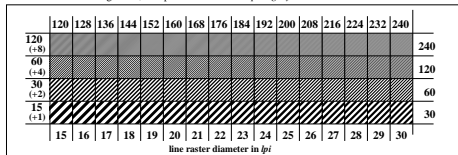
Picture C2: 5 visual equidistant L^* -grey steps + N_0 + W_1 ; PS operator: $w^*lin\ 1.0\ exp\ setgray$



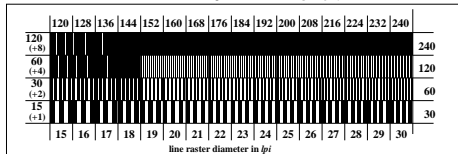
Picture C3: 16 visual equidistant L^* -grey steps; PS operator: $w^*lin\ 1.0\ exp\ setgray$



Picture C4: Landolt-rings W-N; PS operator: $w^*lin\ 1.0\ exp\ setgray$



Picture C5: Line raster under 45° (or 135°); PS operator: $w^*lin\ 1.0\ exp\ setgray$



Picture C6: Line raster under 90° (or 0°); PS operator: $w^*lin\ 1.0\ exp\ setgray$