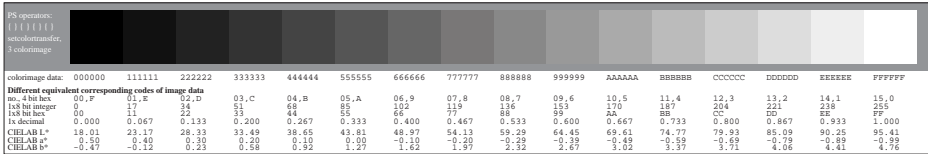
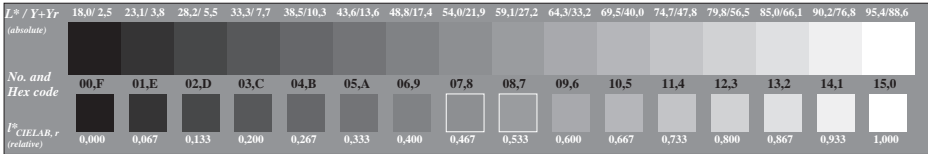


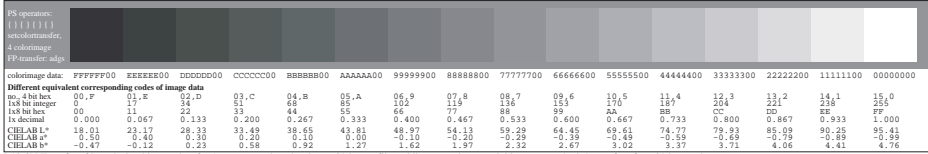
Picture C3: 16 visual equidistant L^* -grey steps; Use of the PS operator `www* setrgbcolor`



L10-3N Transfer of hexadecimal image data for 16 grey steps; hex data in `www*` image file and linear digital spacing;



Picture C3: 16 visual equidistant L^* -grey steps; Use of the PS operator `nnn0* setmncolor`



L10-3N Transfer of hexadecimal image data for 16 grey steps; hex data in `nnn0*` image file and linear spacing; special inverse `cmY0*-olV*` transfer of `nnn0*` image data

Picture C3 of ISO/IEC-test chart 3; input: mixture (m) of PS operators
 similar `olV*` and `cmY0*` colorimage DIS ISO/IEC 19839-X; output: `cmY0* / 000n* setmncolor`

See for similar files: <http://www.ps.bam.de/DE90/DE90.HTM>
 Information and Order: <http://www.ps.bam.de>
 Version 2.0, io=5,0; iORS, oORS, CIE LAB

BAM registration: 20030201-DE90/L90E00F1.PS/.TXT
 application for monitors and printers

BAM material: code=thata