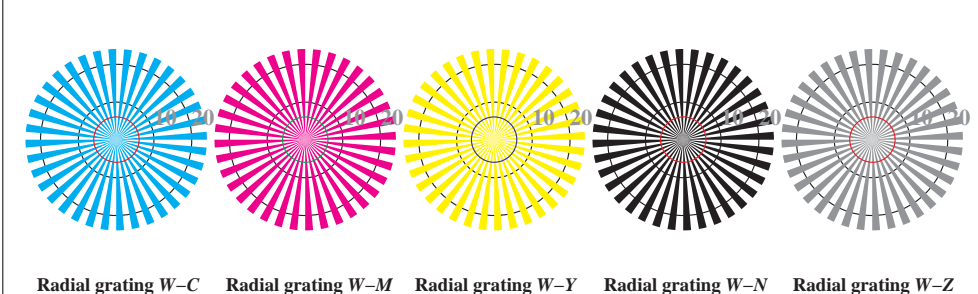
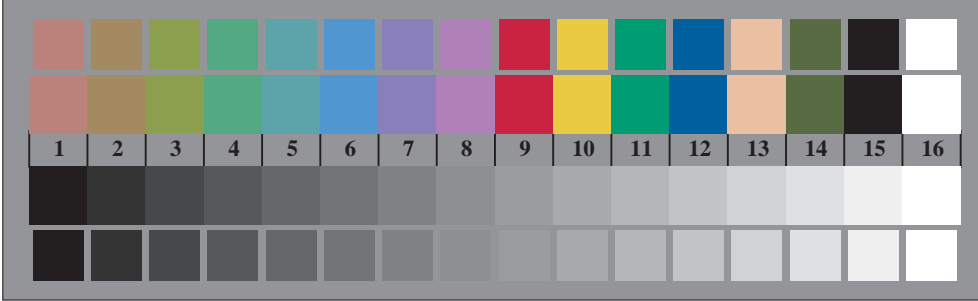




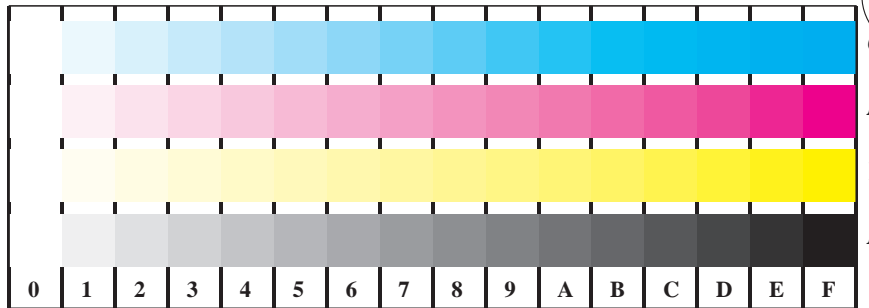
Picture B1: Flower motif, 14 CIE-test colours and 2 + 16 grey steps (sf); PS operators *settransfer*, 3 *colorimage*



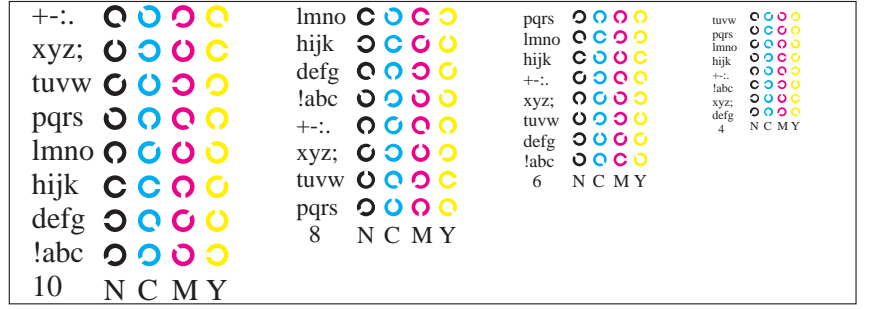
Picture D2: Radial gratings W-O, W-L, W-V, W-N, and W-Z; Use of PS operator *LAB\* setcolor*



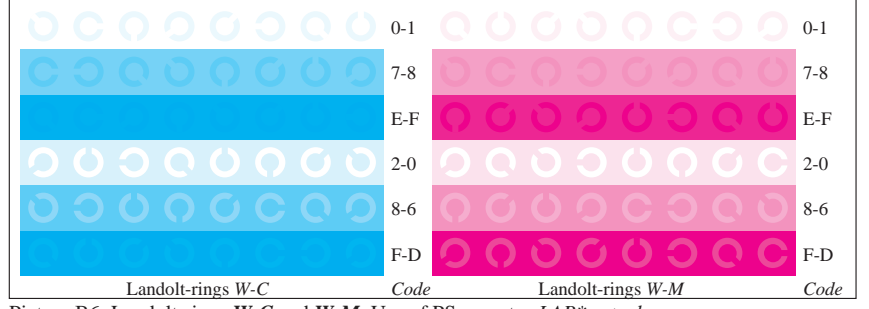
Picture B3: 14 CIE-test colours and 2 + 16 grey steps; Use of PS operator *LAB\* setcolor*



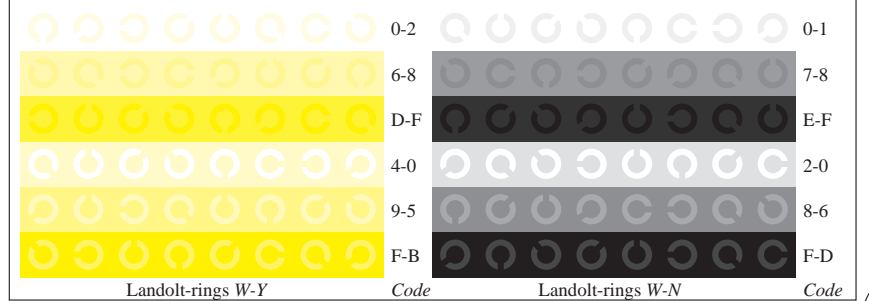
Picture B4: 16 equidistant steps W-C, W-M, W-Y and W-N; PS operator *LAB\* setcolor*



Picture D5: Script and Landolt-rings N, C, M and Y; Use of PS operator *LAB\* setcolor*



Picture B6: Landolt-rings W-C and W-M; Use of PS operator *LAB\* setcolor*



Picture B7: Landolt-rings W-Y and W-N; Use of PS operator *LAB\* setcolor*

See for similar files: <http://www.ps.bam.de/DE92/DE92.HTM>  
 Information and Order: <http://www.ps.bam.de>

Version 2.0, io=5,0; iORS; oORS, CIELAB

BAM registration: 20030101-DE92/10L/L92E00FP.PS/.PDF    application for monitors (Yr=2.5) and printers    BAM material: code=th4ta