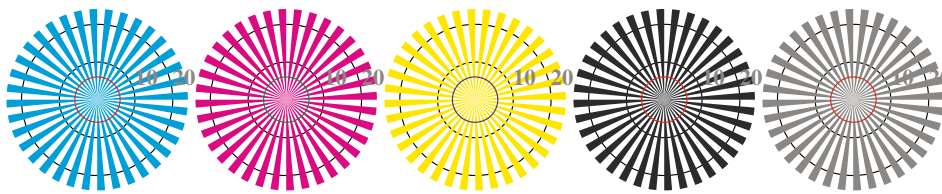


image pixel: 192 x 128  
 384 x 256  
 768 x 512  
 1536 x 1024  
 3072 x 2048

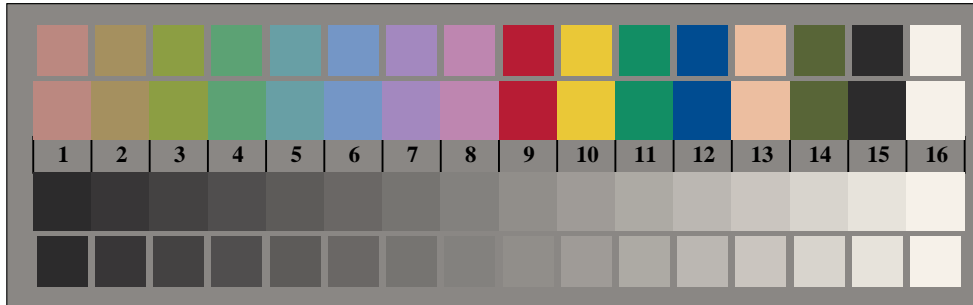


Picture B1: Flower motif, 14 CIE-test colours and 2 + 16 grey steps (sf); PS operators *settransfer*, 3 *colorimage*



Radial grating W-C   Radial grating W-M   Radial grating W-Y   Radial grating W-N   Radial grating W-Z

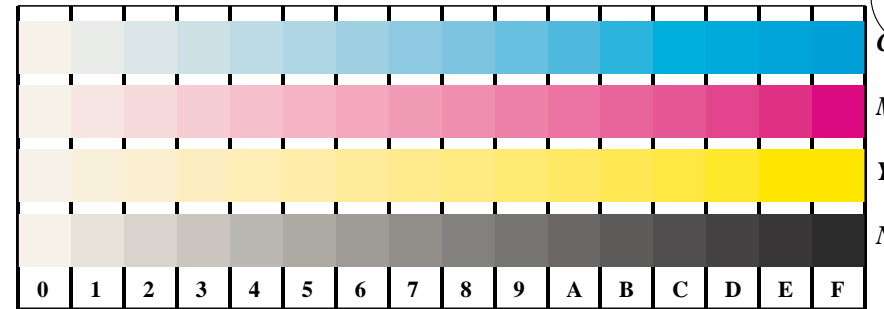
Picture D2: Radial gratings W-O, W-L, W-V, W-N, and W-Z; Use of PS operator *LAB\* setcolor*



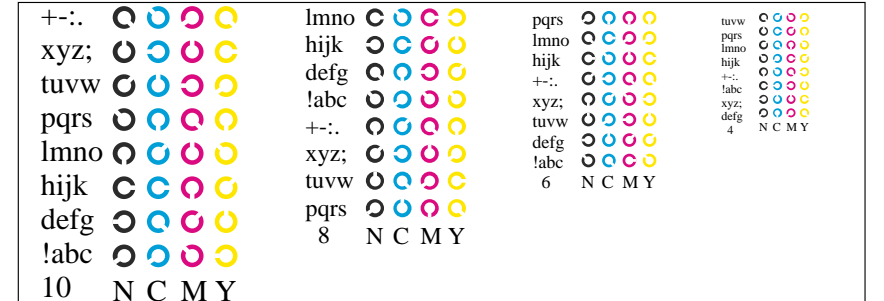
Picture B3: 14 CIE-test colours and 2 + 16 grey steps; Use of PS operator *LAB\* setcolor*

Fig. B1 to B7 of ISO/IEC-test chart 2;

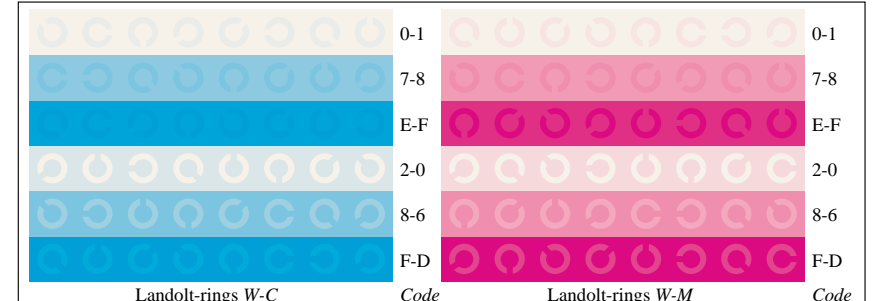
ISO/IEC 15775 and input: *LAB\* setcolor*  
 DIS ISO/IEC 19839-X; output: *Startup (S) data dependend*



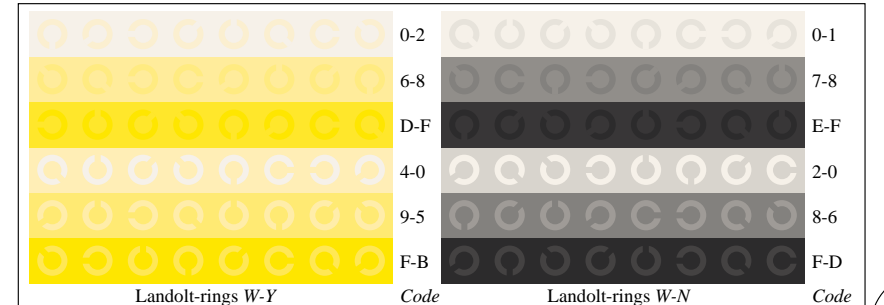
Picture B4: 16 equidistant steps W-C, W-M, W-Y and W-N; PS operator *LAB\* setcolor*



Picture D5: Script and Landolt-rings N, C, M and Y; Use of PS operator *LAB\* setcolor*



Picture B6: Landolt-rings W-C and W-M; Use of PS operator *LAB\* setcolor*



Picture B7: Landolt-rings W-Y and W-N; Use of PS operator *LAB\* setcolor*