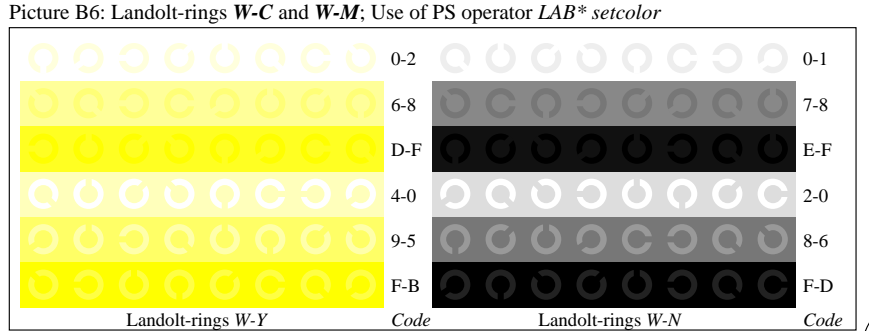
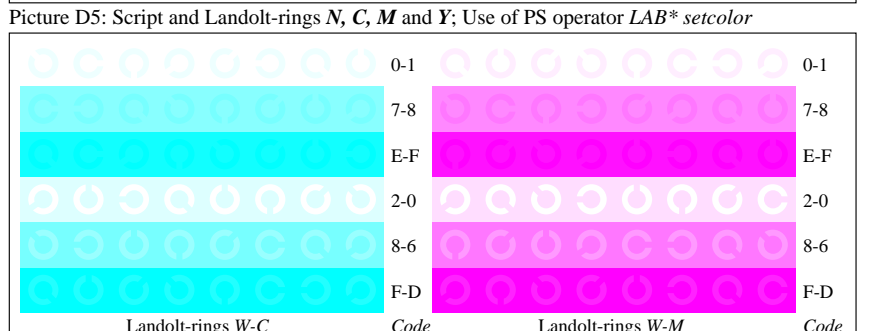
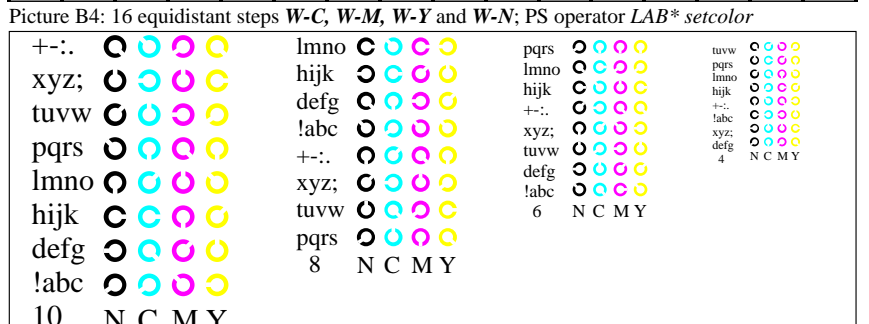
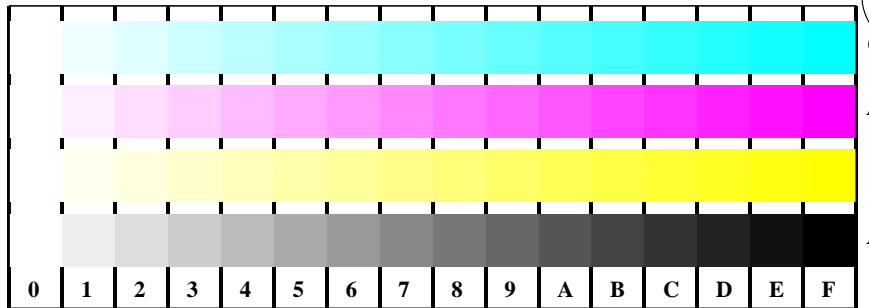


Picture B3: 14 CIE-test colours and 2 + 16 grey steps; Use of PS operator *LAB* setcolor*



Picture B7: Landolt-rings W-Y and W-N; Use of PS operator *LAB* setcolor*

See for similar files: <http://www.ps.bam.de/DE92/DE92.HTM>
 Information and Order: <http://www.ps.bam.de>
 Version 2.0, io=5,3; iORS; oORS, CIELAB

BAM registration: 20030101-DE92/10L/L92E03FP.PS/.PDF application for monitors (Yr=2.5) and printers BAM material: code=tha4ta