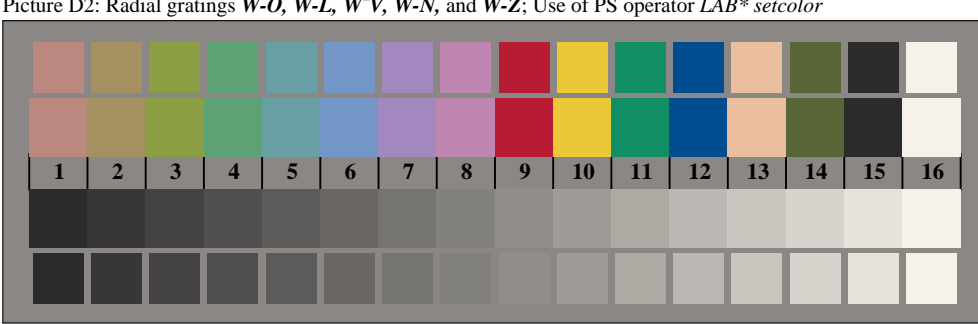
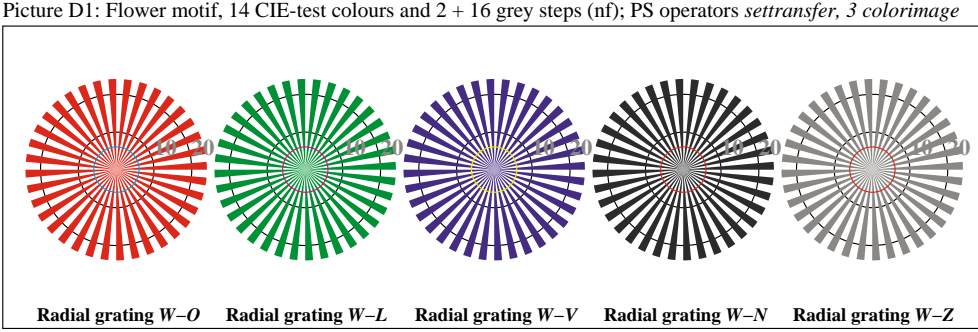
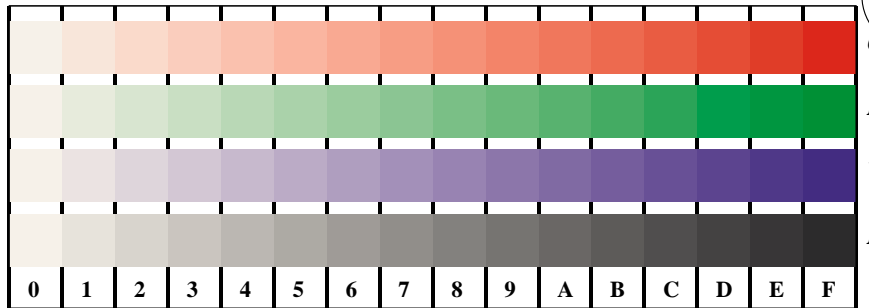


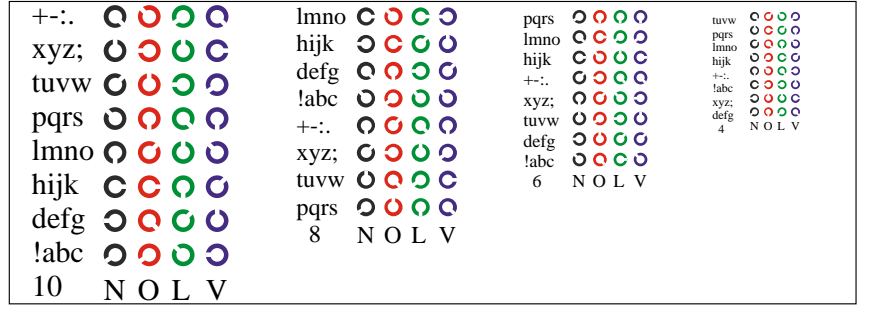
www.ps.bam.de/DE94/10L/L94E00SP.PS/.PDF;  
 S: Output Linearization (OL) data DE94/10L/L94E00SP.DAT in Distiller Startup (S) Directory



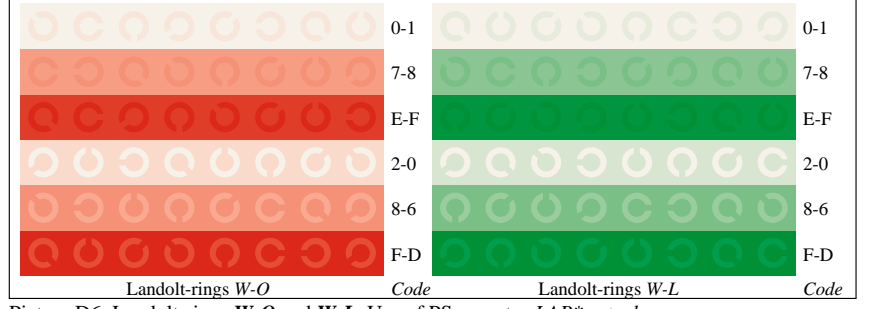
Picture B3: 14 CIE-test colours and 2 + 16 grey steps; Use of PS operator *LAB\* setcolor*



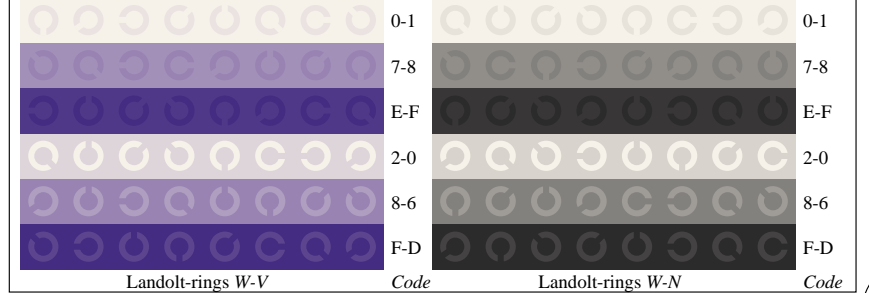
Picture D4: 16 equidistant steps W-O, W-L, W-V and W-N; Use of PS operator *LAB\* setcolor*



Picture D5: Script and Landolt-rings N, O, L and V; Use of PS operator *LAB\* setcolor*



Picture D6: Landolt-rings W-O and W-L; Use of PS operator *LAB\* setcolor*



Picture D7: Landolt-rings W-V and W-N; Use of PS operator *LAB\* setcolor*

Fig. D1 to D7 of ISO/IEC-test chart 4; ISO/IEC 15775 and input: *LAB\* setcolor*  
 DIS ISO/IEC 19839-X; output: *Startup (S) data dependend*