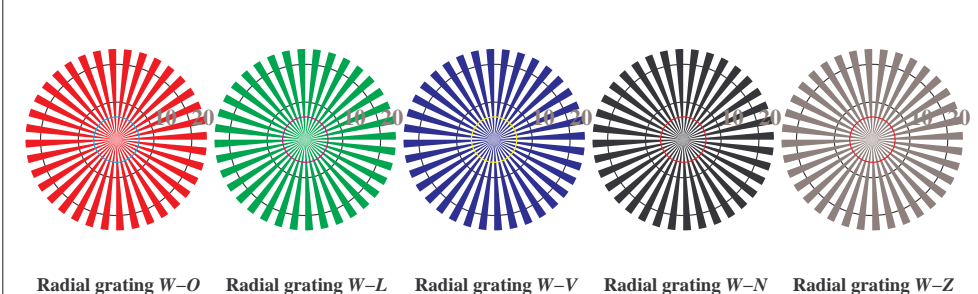




Picture D1: Flower motif, 14 CIE-test colours and 2 + 16 grey steps (nf); PS operators *settransfer*, 3 *colorimage*

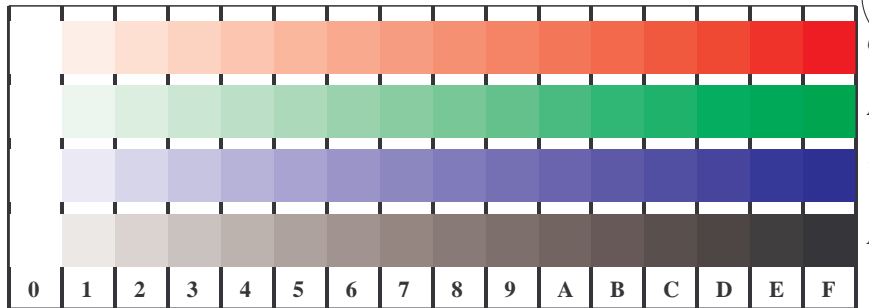


Picture D2: Radial gratings W-O, W-L, W-V, W-N, and W-Z; Use of PS operator *LAB* setcolor*

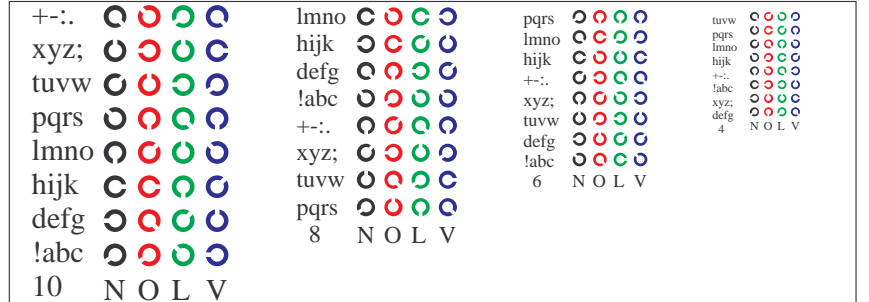


Picture B3: 14 CIE-test colours and 2 + 16 grey steps; Use of PS operator *LAB* setcolor*

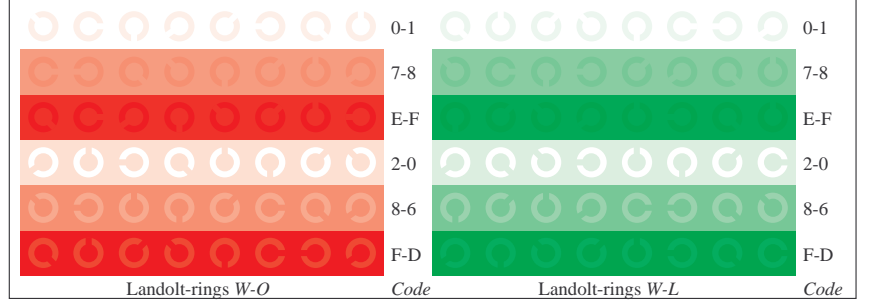
Fig. D1 to D7 of ISO/IEC-test chart 4;



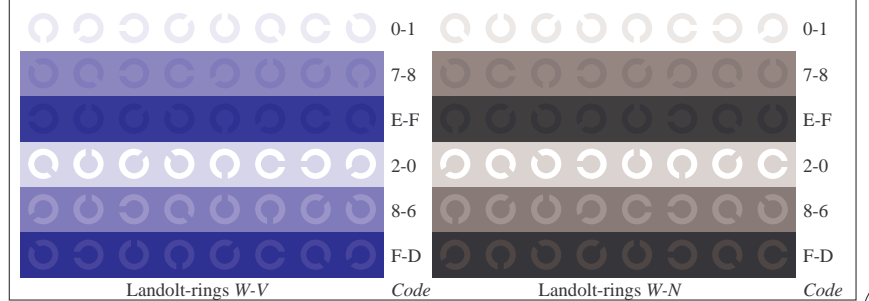
Picture D4: 16 equidistant steps W-O, W-L, W-V and W-N; Use of PS operator *LAB* setcolor*



Picture D5: Script and Landolt-rings N, O, L and V; Use of PS operator *LAB* setcolor*



Picture D6: Landolt-rings W-O and W-L; Use of PS operator *LAB* setcolor*



Picture D7: Landolt-rings W-V and W-N; Use of PS operator *LAB* setcolor*

ISO/IEC 15775 and input: *LAB* setcolor*
 DIS ISO/IEC 19839-X; output: *cmy0* / nnn0* setcmykcolor*

See for similar files: <http://www.ps.bam.de/DE94/DE94.HTM>
 Information and Order: <http://www.ps.bam.de>
 Version 2.0, io=5,2; iORS; oORS, CIELAB

BAM registration: 20030101-DE94/10L/L94E02FP.PS/.PDF application for monitors (Yr=2.5) and printers BAM material: code=th4t4