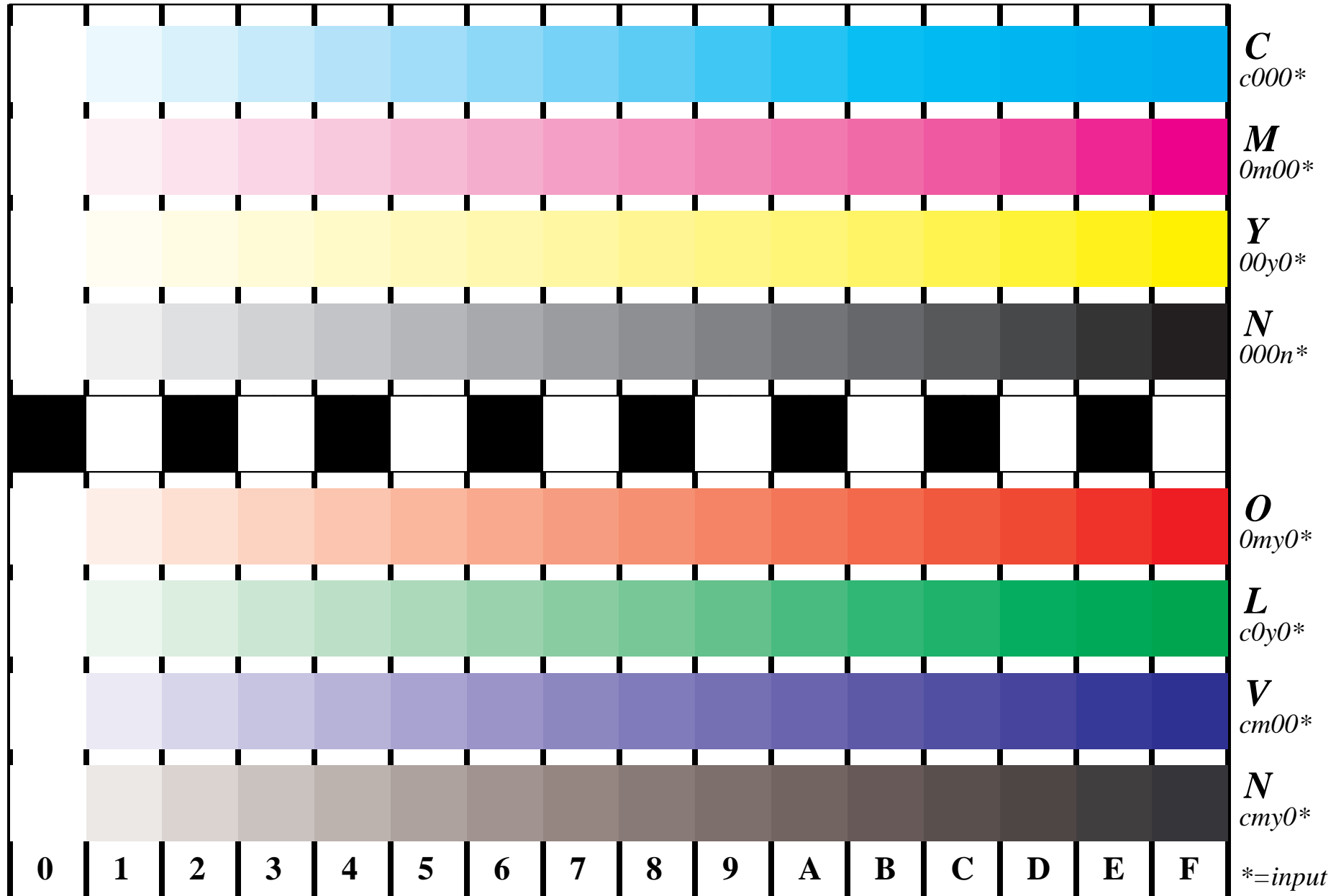


See for similar files: <http://www.ps.bam.de/DE95/DE95.HTM>
 Information and Order: <http://www.ps.bam.de> Version 2.0, io=0,0

BAM registration: 20030101-DE95/100/O95E01NP.PS/.PDF BAM material: code=tha4ta
 application for measurement of monitor (Yr=2.5) and printer output



Picture B4 and D4: 16 equidistant steps **B4**: W-C, W-M, W-Y and W-N; **D4**: W-O, W-L, W-V and W-N(CMY); Use of PS operator; B4: cmy0* / 000n* setcmycolor; D4: cmy0* setcmycolor (only)

Fig. B4 of ISO/IEC-test chart 2 and
 Fig. D4 of ISO/IEC-test chart no. 4;

ISO/IEC 15775 and
 TR ISO/IEC 24705;

input: cmy0* setcmycolor
 output: no change compared to input

