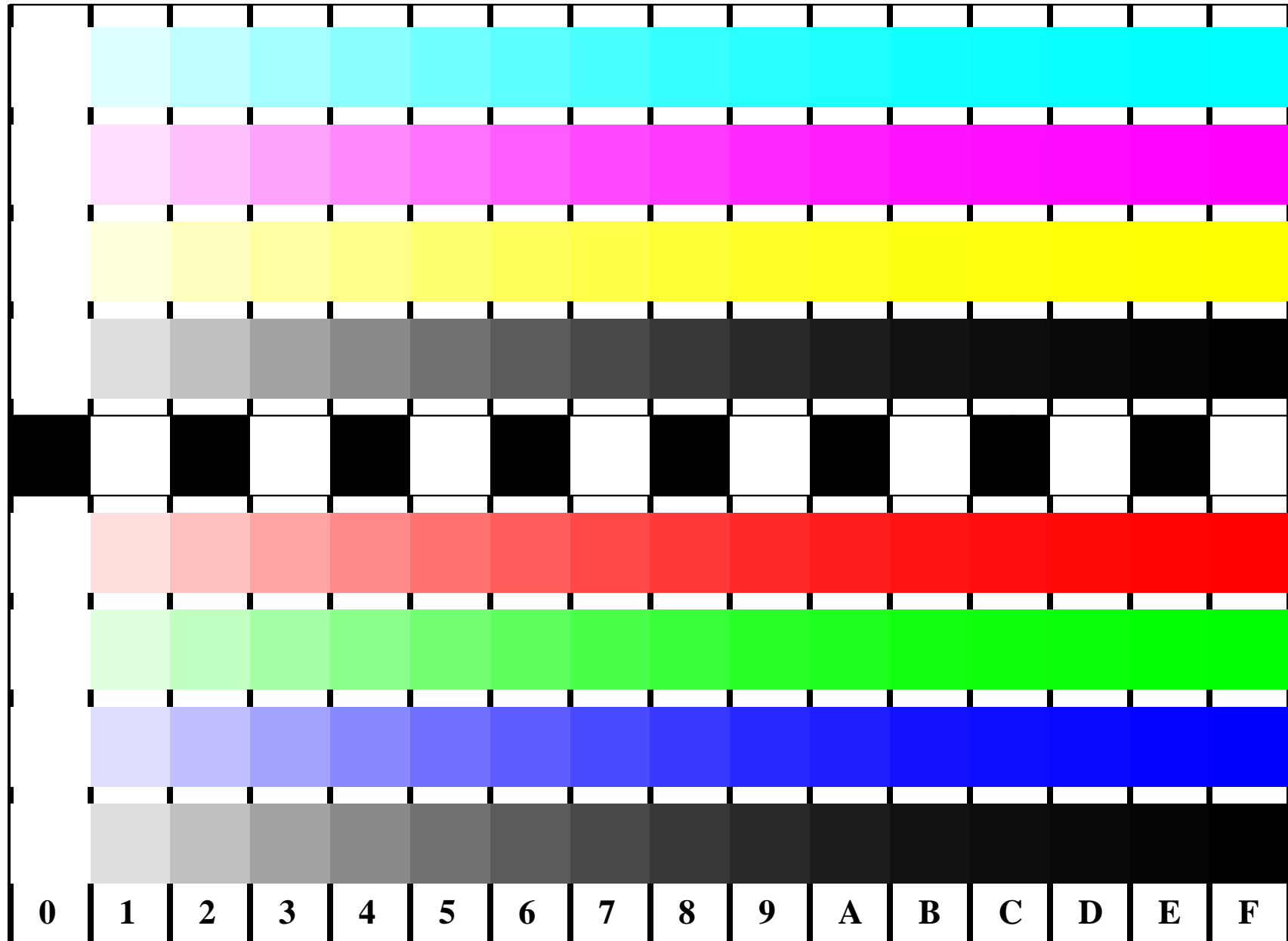




See for similar files: <http://www.ps.bam.de/DE95/DE95.HTM>  
Information and Order: <http://www.ps.bam.de> Version 2.0, io=0,1; iORS; oORS, CIELAB

BAM registration: 20030101-DE95/10S/S95E01FP.PS/.PDF BAM material: code=tha4ta  
application for measurement of monitor (Yr=2.5) and printer output



**C**  
*c000\**  
**M**  
*0m00\**  
**Y**  
*00y0\**  
**N**  
*000n\**  
**O**  
*0my0\**  
**L**  
*c0y0\**  
**V**  
*cm00\**  
**N**  
*cmy0\**  
\*=input

Picture B4 and D4: 16 equidistant steps **B4**: W-C, W-M, W-Y and W-N; **D4**: W-O, W-L, W-V and W-N(CMY); Use of PS operator; B4: cmy0\* / 000n\* setcmycolor; D4: cmy0\* setcmycolor (only)

Fig. B4 of ISO/IEC-test chart 2 and  
Fig. D4 of ISO/IEC-test chart no. 4;

ISO/IEC 15775 and  
TR ISO/IEC 24705;

input: *cmy0\* setcmycolor*  
output: *olv\* setrgbcolor / w\* setgray*

