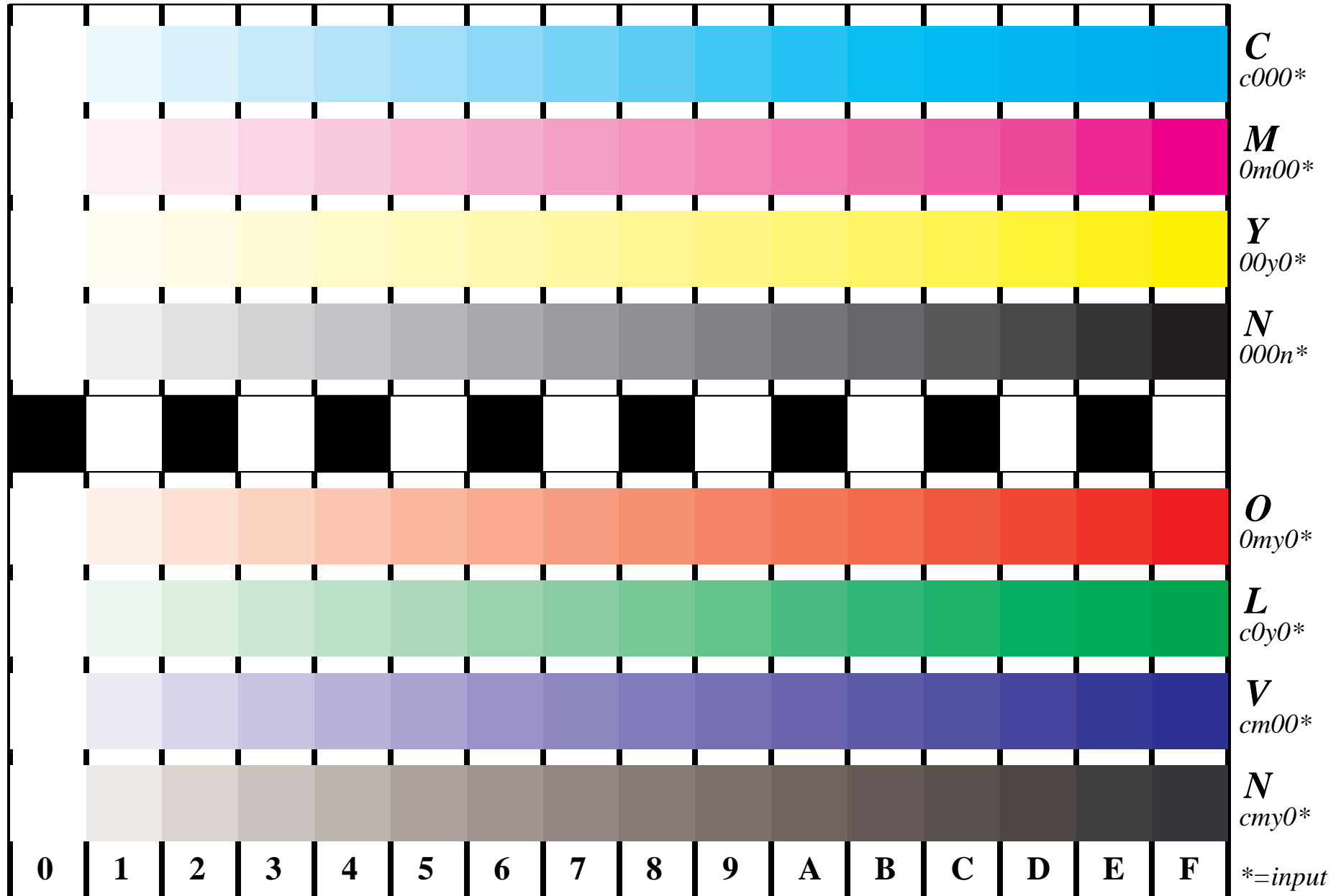




See for similar files: <http://www.ps.bam.de/DE95/DE95.HTM>  
 Information and Order: <http://www.ps.bam.de> Version 2.0, io=0,0?

BAM registration: 20030101-DE95/10S/S95E02SP.PS/.PDF BAM material: code=tha4ta  
 application for measurement of monitor (Yr=2.5) and printer output



Picture B4 and D4: 16 equidistant steps **B4**: W-C, W-M, W-Y and W-N; **D4**: W-O, W-L, W-V and W-N(CMY); Use of PS operator; B4:  $cmy0^*/000n^*$  setcmycolor; D4:  $cmy0^*$  setcmycolor (only)

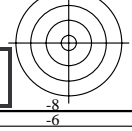


Fig. B4 of ISO/IEC-test chart 2 and  
 Fig. D4 of ISO/IEC-test chart no. 4;

ISO/IEC 15775 and  
 TR ISO/IEC 24705;

input:  $cmy0^*$  setcmycolor  
 output: Startup (S) data dependend

