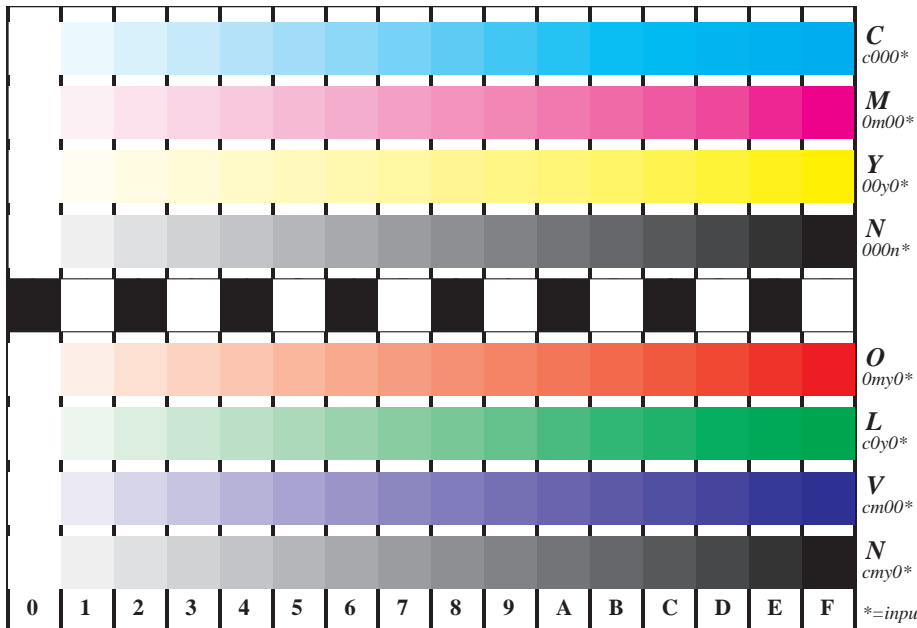


See for similar files: <http://www.ps.bam.de/DE95/DE95.HTM>
 Information and Order: <http://www.ps.bam.de> Version 2.0, io=0,0; iORS; oORS, CIELAB

BAM registration: 20030101-DE95/L95E00F1.PS/.TXT
 application for measurement of monitor (Yf=2.5) and printer output
 BAM material: code=thata



Picture B4 and D4: 16 equidistant steps B4: W-C, W-M, W-Y and W-N; D4: W-O, W-L, W-V and W-N(CMY); Use of PS operator; B4: $cm\dot{y}0^*/000n^*$ setcmykcolor; D4: $cm\dot{y}0^*$ setcmykcolor (only)

Fig. B4 of ISO/IEC-test chart 2 and
 Fig. D4 of ISO/IEC-test chart no. 4;

ISO/IEC 15775 and
 TR ISO/IEC 24705;

input: $cm\dot{y}n^*$ setcmykcolor
 output: $cm\dot{y}0^*/000n^*$ setcmykcolor

