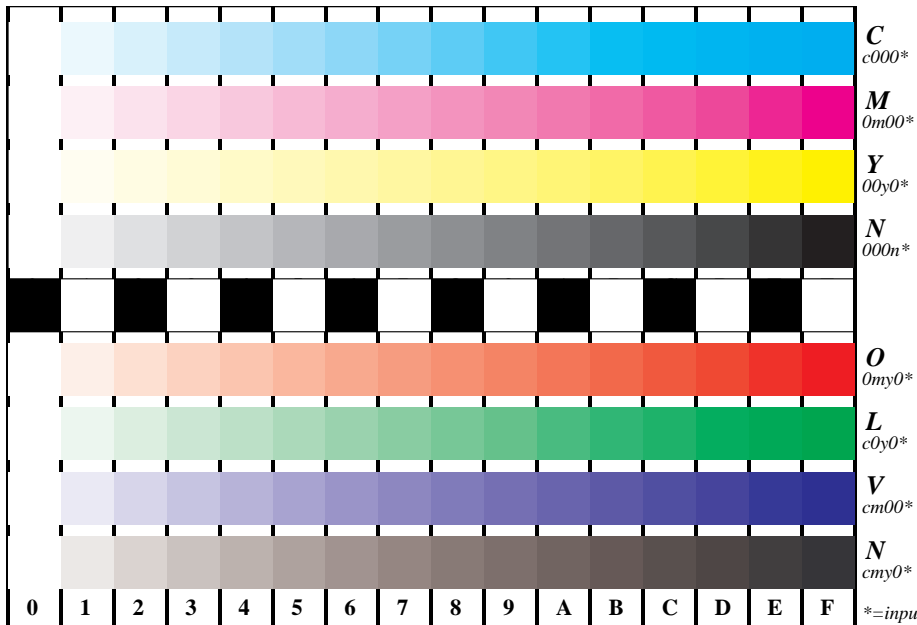


See for similar files: <http://www.ps.bam.de/DE95/DE95.HTM>  
 Information and Order: <http://www.ps.bam.de> Version 2.0, io=0,0



Picture B4 and D4: 16 equidistant steps *B4*: W-C, W-M, W-Y and W-N; *D4*: W-O, W-L, W-V and W-N(CMY); Use of PS operator; *B4*: cmy0\* / 000n\* setcmykcolor; *D4*: cmy0\* setcmykcolor (only)

Fig. B4 of ISO/IEC-test chart 2 and  
 Fig. D4 of ISO/IEC-test chart no. 4;

ISO/IEC 15775 and  
 TR ISO/IEC 24705;

input: *cmy n\* setcmykcolor*  
 output: *no change compared to input*

\*=*input*

BAM registration: 20030101-DE95/L95E00N1.PS/.TXT  
 application for measurement of monitor (Yf=2.5) and printer output  
 BAM material: code=thata4