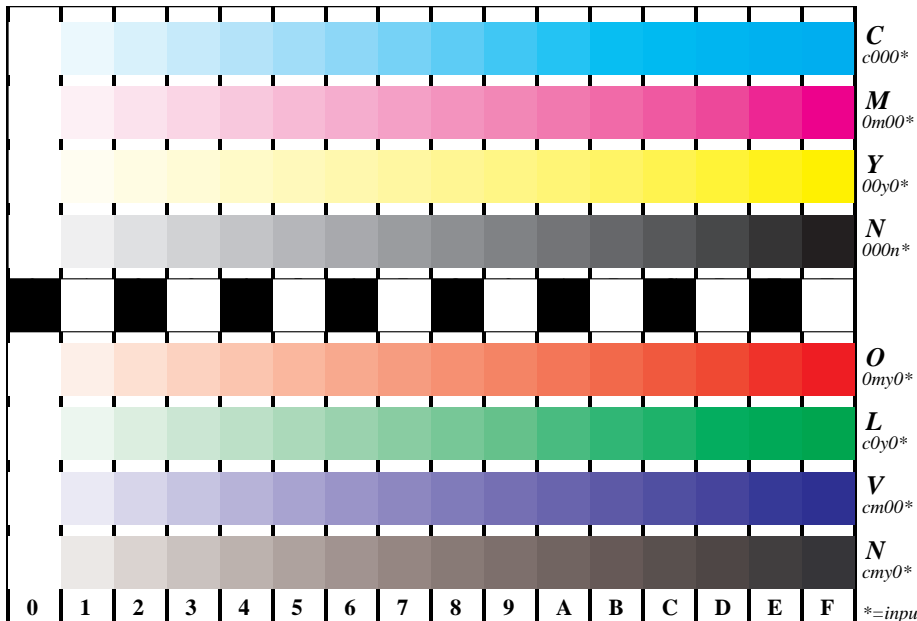


See for similar files: <http://www.ps.bam.de/DE95/DE95.HTM>  
Information and Order: <http://www.ps.bam.de> Version 2.0, io=0,0



BAM registration: 20030101-DE95/O95E00N1.PS/.TXT  
application for measurement of monitor (Yf=2.5) and printer output  
BAM material: code=thata4

Picture B4 and D4: 16 equidistant steps B4: W-C, W-M, W-Y and W-N; D4: W-O, W-L, W-V and W-N(CMY); Use of PS operator; B4: cmy0\* / 000n\* setcmykcolor; D4: cmy0\* setcmykcolor (only)

Fig. B4 of ISO/IEC-test chart 2 and Fig. D4 of ISO/IEC-test chart no. 4; ISO/IEC 15775 and TR ISO/IEC 24705; input: cmy<sub>n</sub>\* setcmykcolor  
output: no change compared to input