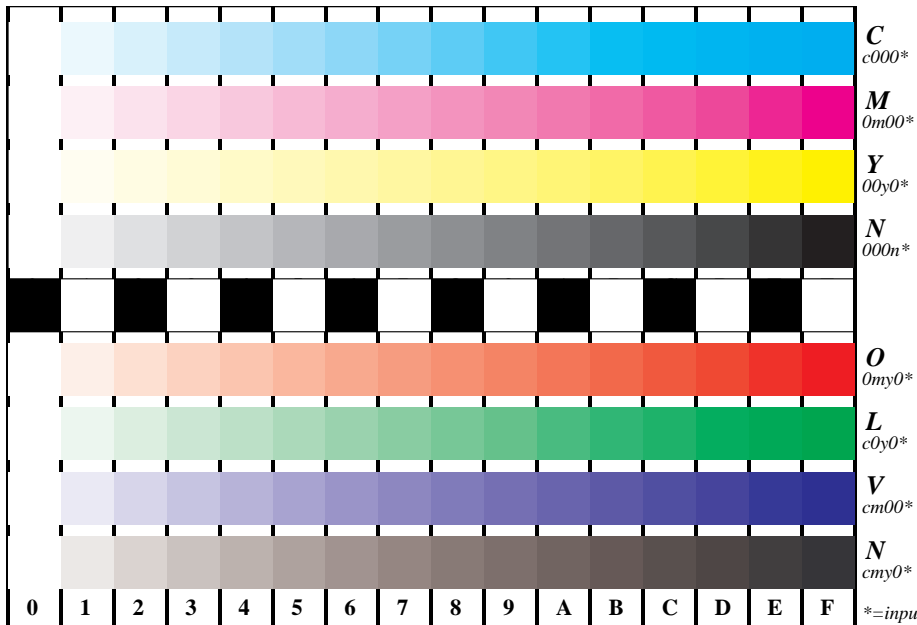


See for similar files: <http://www.ps.bam.de/DE95/DE95.HTM>
 Information and Order: <http://www.ps.bam.de> Version 2.0, io=0,0



BAM registration: 20030101-DE95/S95E00N1.PS/.TXT
 application for measurement of monitor (Yf=2.5) and printer output
 BAM material: code=thata

Picture B4 and D4: 16 equidistant steps B4: W-C, W-M, W-Y and W-N; D4: W-O, W-L, W-V and W-N(CMY); Use of PS operator; B4: cmy0* / 000n* setcmykcolor; D4: cmy0* setcmykcolor (only)

Fig. B4 of ISO/IEC-test chart 2 and Fig. D4 of ISO/IEC-test chart no. 4; ISO/IEC 15775 and TR ISO/IEC 24705; input: cmyⁿ* setcmykcolor output: no change compared to input