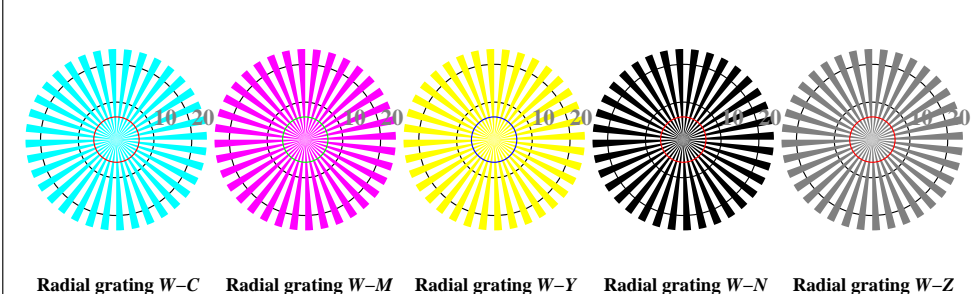
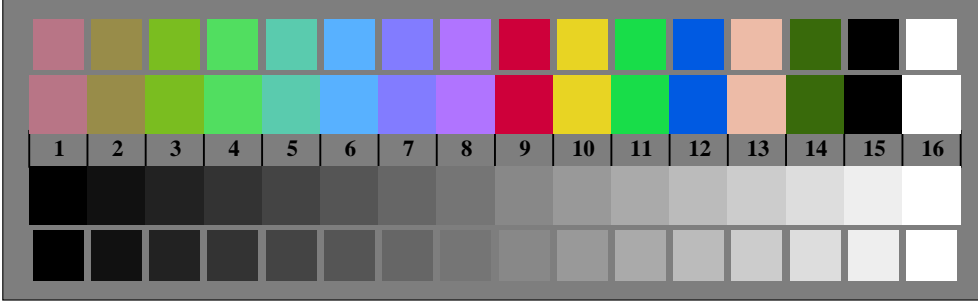




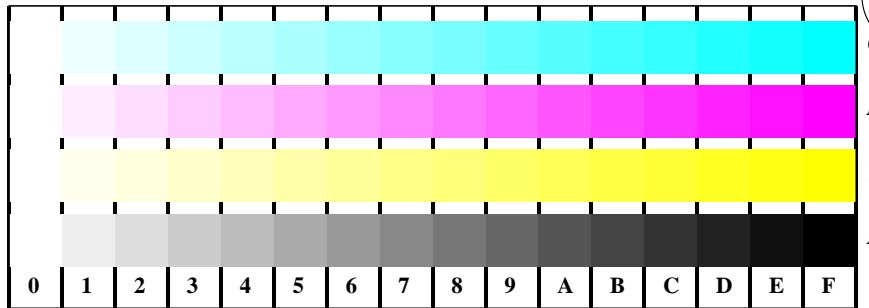
Picture B1: Flower motif, 14 CIE-test colours and 2 + 16 grey steps (sf); PS operators *settransfer*, 3 *colorimage*



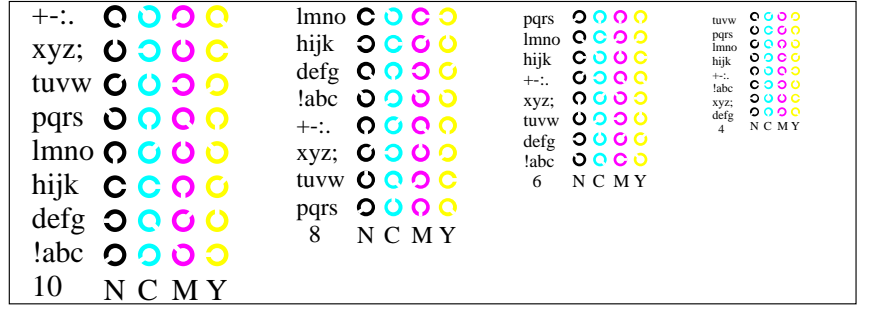
Picture B2: Radial gratings W-C, W-L, W-Y, W-N, and W-Z; PS operator *olv* setrgbcolor / w* setgray*



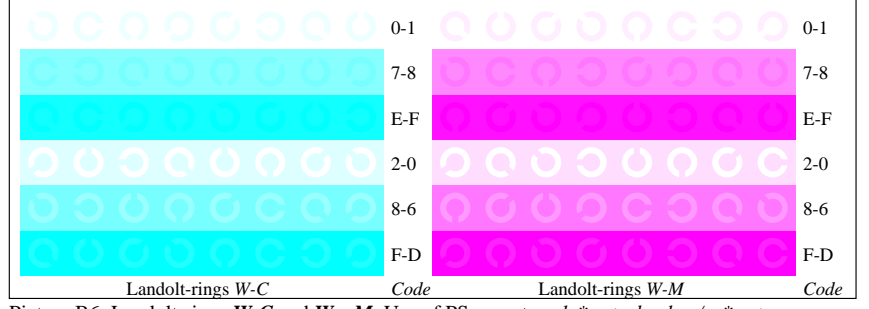
Picture B3: 14 CIE-test colours and 2 + 16 grey steps; Use of PS operator *olv* setrgbcolor / w* setgray*



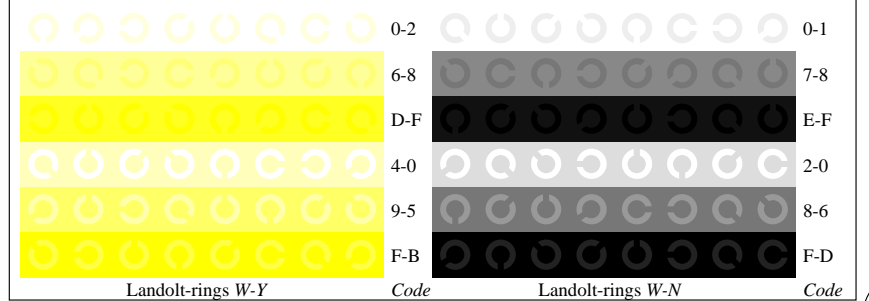
Picture B4: 16 equidistant steps W-C, W-M, W-Y and W-N; PS operator *olv* setrgbcolor / w* setgray*



Picture B5: Script and Landolt-rings N, M, C and Y; Use of PS operator *olv* setrgbcolor / w* setgray*



Picture B6: Landolt-rings W-C and W-M; Use of PS operator *olv* setrgbcolor / w* setgray*



Picture B7: Landolt-rings W-Y and W-N; Use of PS operator *olv* setrgbcolor / w* setgray*

See for similar files: <http://www.ps.bam.de/DE97/Information and Order: http://www.ps.bam.de>

Version 2.0, io=1,1; iORS; oORS, CIELAB

BAM registration: 20030101-DE97/10L/L97E01FP.PS/.PDF application for monitors (Yr=2.5) and printers BAM material: code=tha4ta