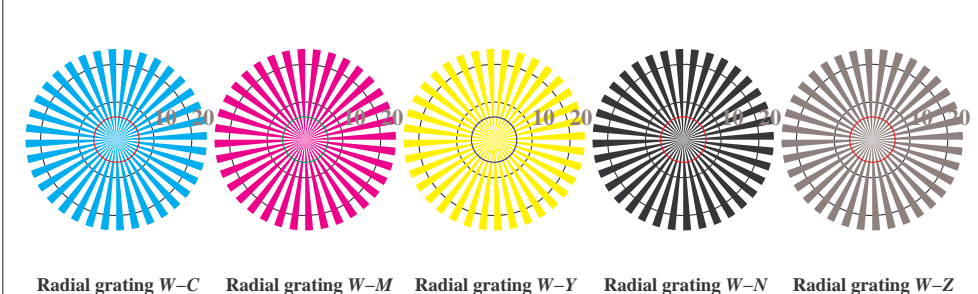
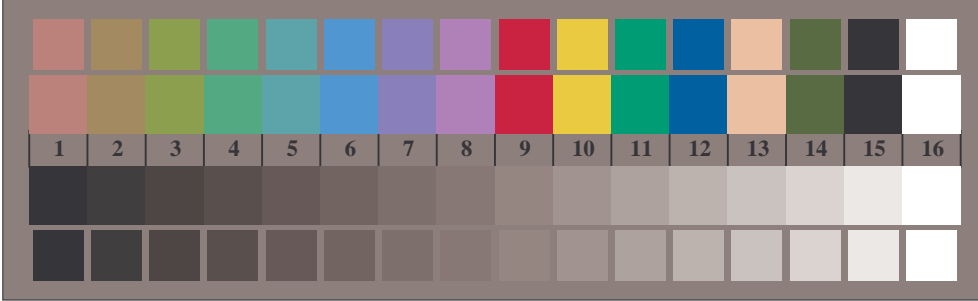




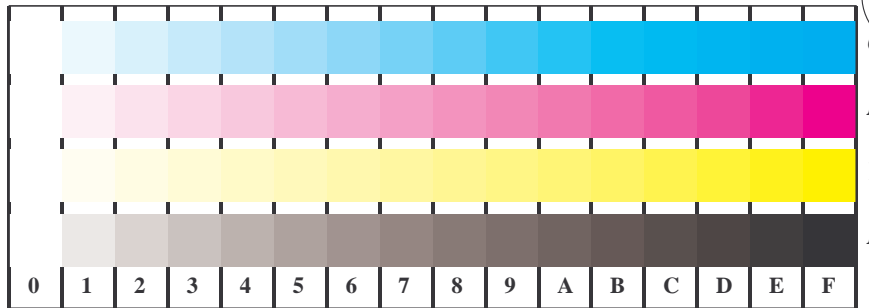
Picture B1: Flower motif, 14 CIE-test colours and 2 + 16 grey steps (sf); PS operators *settransfer*, 3 *colorimage*



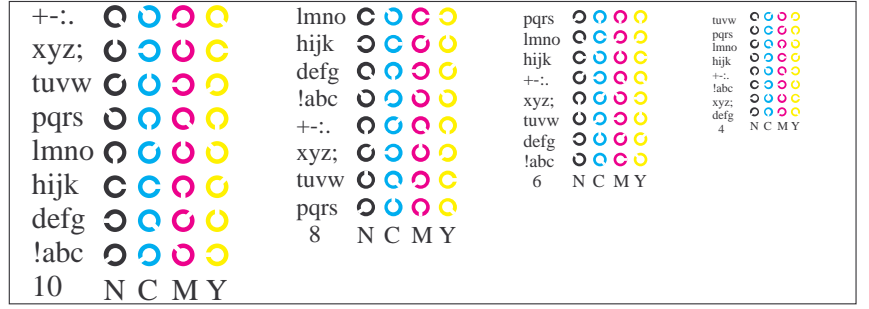
Picture B2: Radial gratings W-C, W-L, W-Y, W-N, and W-Z; PS operator *olv\* setrgbcolor / w\* setgray*



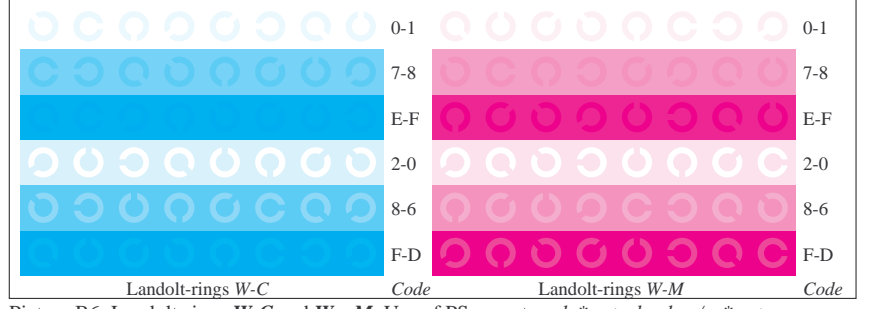
Picture B3: 14 CIE-test colours and 2 + 16 grey steps; Use of PS operator *olv\* setrgbcolor / w\* setgray*



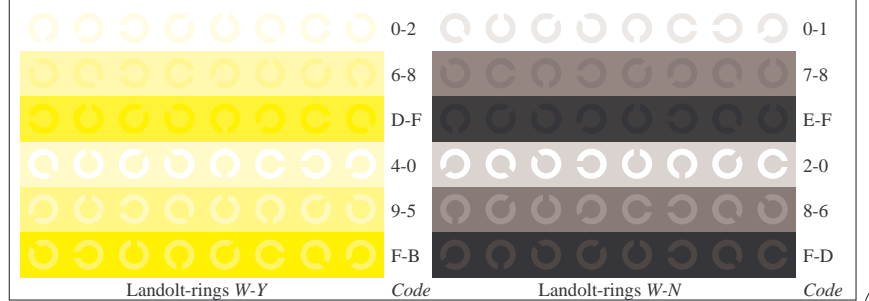
Picture B4: 16 equidistant steps W-C, W-M, W-Y and W-N; PS operator *olv\* setrgbcolor / w\* setgray*



Picture B5: Script and Landolt-rings N, M, C and Y; Use of PS operator *olv\* setrgbcolor / w\* setgray*



Picture B6: Landolt-rings W-C and W-M; Use of PS operator *olv\* setrgbcolor / w\* setgray*



Picture B7: Landolt-rings W-Y and W-N; Use of PS operator *olv\* setrgbcolor / w\* setgray*

Fig. B1 to B7 of ISO/IEC-test chart 2; ISO/IEC 15775 and input: *olv\* setrgbcolor / w\* setgray*  
 DIS ISO/IEC 19839-X; output: *cmy0\* / nnn0\* setcmykcolor*

See for similar files: <http://www.ps.bam.de/DE97/>  
 Information and Order: <http://www.ps.bam.de>

Version 2.0, io=1,2; iORS; oORS, CIELAB

BAM registration: 20030101-DE97/10L/L97E02FP.PS/.PDF    application for monitors (Yr=2.5) and printers    BAM material: code=tha4ta