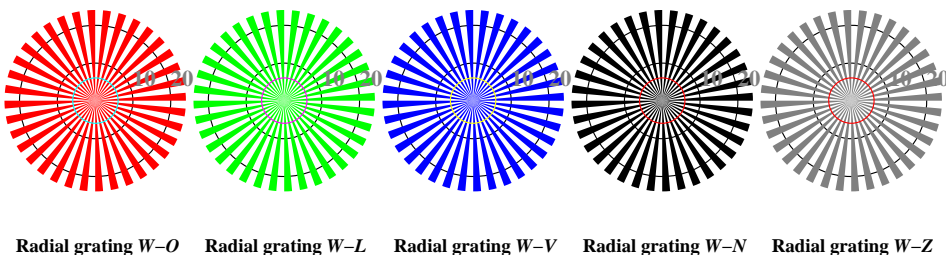


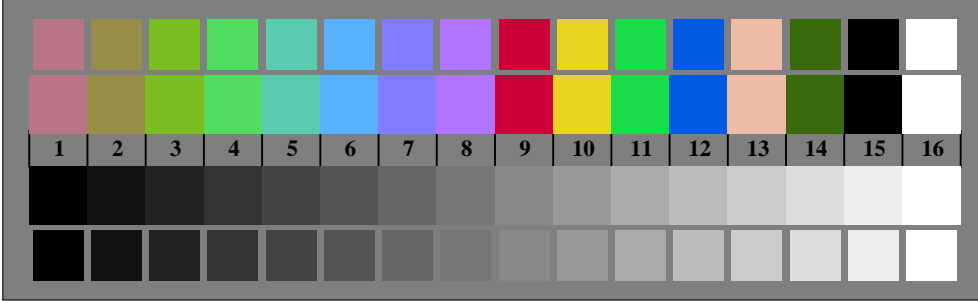
image pixel: 192 x 128
 384 x 256
 768 x 512
 1536 x 1024
 3072 x 2048



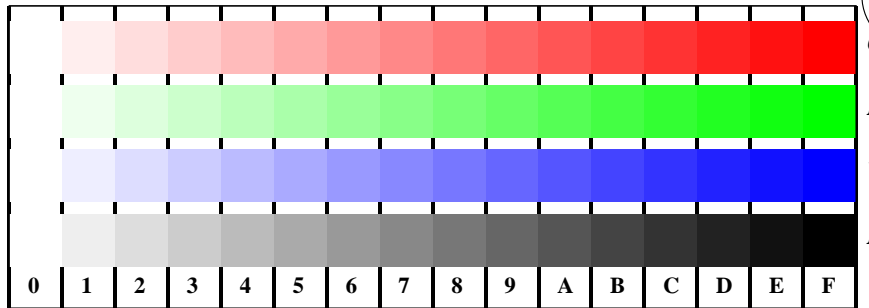
Picture D1: Flower motif, 14 CIE-test colours and 2 + 16 grey steps (nf); PS operators *settransfer*, 3 *colorimage*



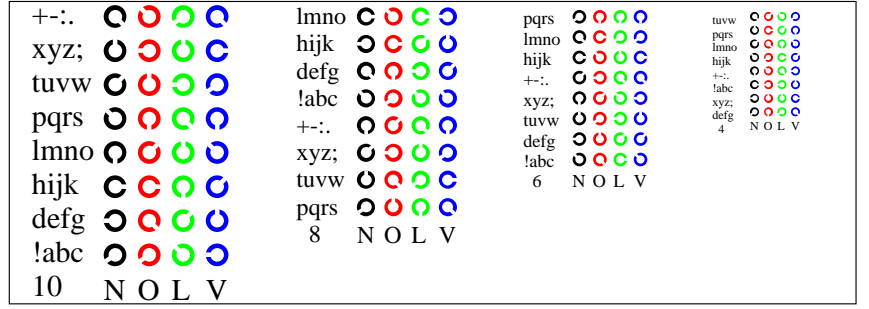
Picture D2: Radial gratings *W-O*, *W-L*, *W-V*, *W-N*, and *W-Z*; PS operator *olv* setrgbcolor* (only)



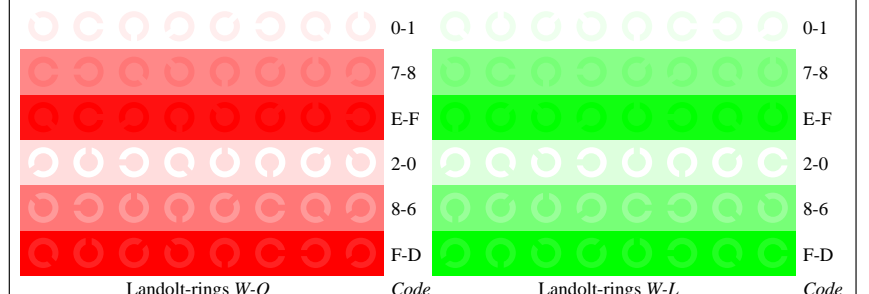
Picture D3: 14 CIE-test colours and 2 + 16 grey steps; Use of PS operator *olv* setrgbcolor* (only)



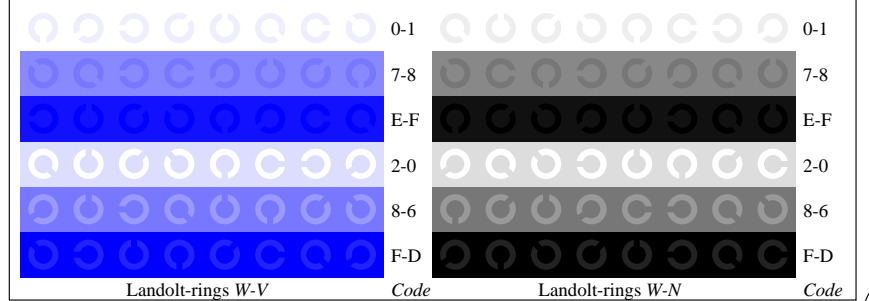
Picture D4: 16 equidistant steps *W-O*, *W-L*, *W-V* and *W-N*; Use of PS operator *olv* setrgbcolor* (only)



Picture D5: Script and Landolt-rings *N*, *O*, *L* and *V*; Use of PS operator *olv* setrgbcolor* (only)



Picture D6: Landolt-rings *W-O* and *W-L*; Use of PS operator *olv* setrgbcolor* (only)



Picture D7: Landolt-rings *W-V* and *W-N*; Use of PS operator *olv* setrgbcolor* (only)

Fig. D1 to D7 of ISO/IEC-test chart 4;

ISO/IEC 15775 and input: *olv* setrgbcolor* (only)
 DIS ISO/IEC 19839-X; output: *olv*/www* setrgbcolor*

BAM registration: 20030101-DE99/10L/L99E03FP.PS/.PDF
 application for monitors (Yr=2.5) and printers
 BAM material: code=th4ta

See for similar files: <http://www.ps.bam.de/DE99/>
 Information and Order: <http://www.ps.bam.de>
 Version 2.0, io=3,3; iORS; oORS, CIELAB