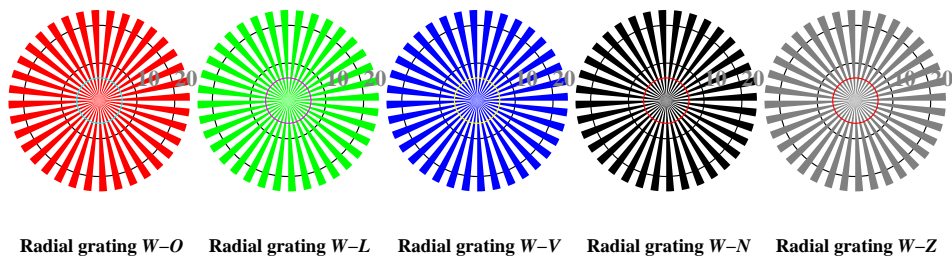


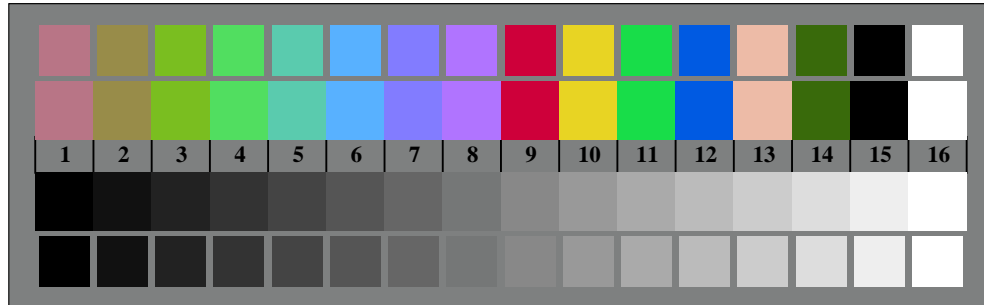
image pixel: 192 x 128
 384 x 256
 768 x 512
 1536 x 1024
 3072 x 2048



Picture D1: Flower motif, 14 CIE-test colours and 2 + 16 grey steps (nf); PS operators *settransfer*, 3 *colorimage*



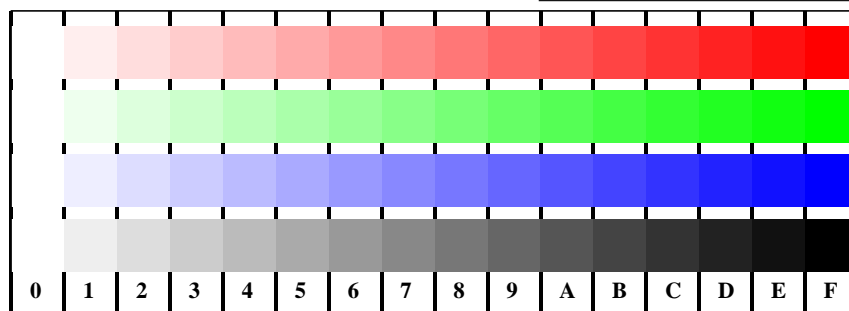
Picture D2: Radial gratings *W-O*, *W-L*, *W-V*, *W-N*, and *W-Z*; PS operator *olv* setrgbcolor* (only)



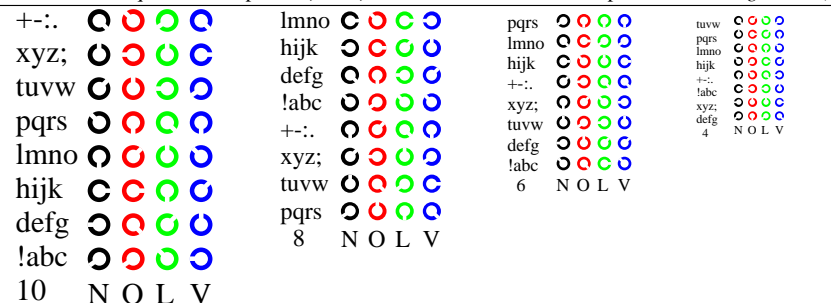
Picture D3: 14 CIE-test colours and 2 + 16 grey steps; Use of PS operator *olv* setrgbcolor* (only)

Fig. D1 to D7 of ISO/IEC-test chart 4;

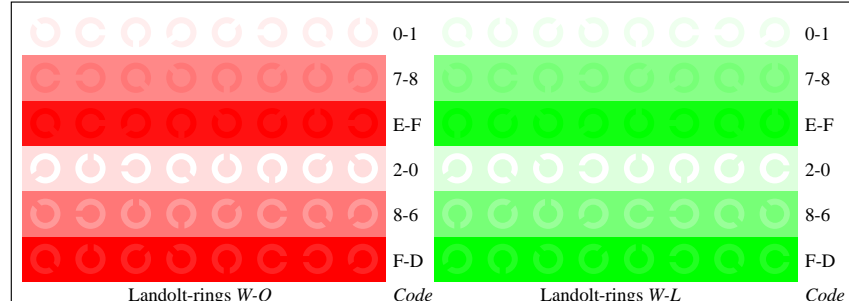
ISO/IEC 15775 and input: *olv* setrgbcolor* (only)
 DIS ISO/IEC 19839-X; output: *no change compared to input*



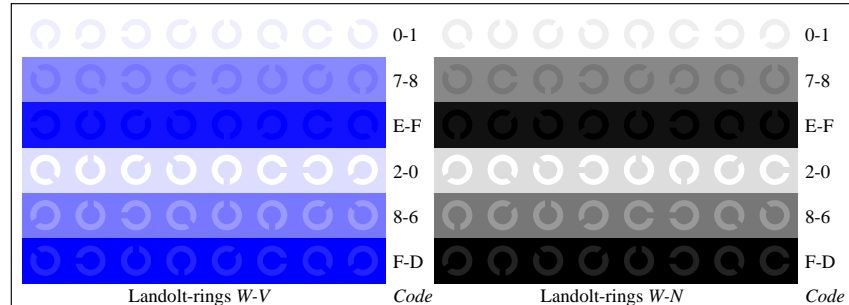
Picture D4: 16 equidistant steps *W-O*, *W-L*, *W-V* and *W-N*; Use of PS operator *olv* setrgbcolor* (only)



Picture D5: Script and Landolt-rings *N*, *O*, *L* and *V*; Use of PS operator *olv* setrgbcolor* (only)



Picture D6: Landolt-rings *W-O* and *W-L*; Use of PS operator *olv* setrgbcolor* (only)



Picture D7: Landolt-rings *W-V* and *W-N*; Use of PS operator *olv* setrgbcolor* (only)