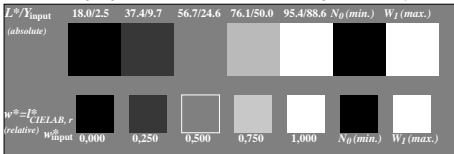
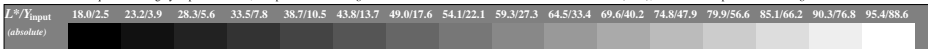


Picture C1: Radial gratings (Siemens-stars) N-W, W-N, N-Z and W-Z; PS operator: `www* setrgbcolor`

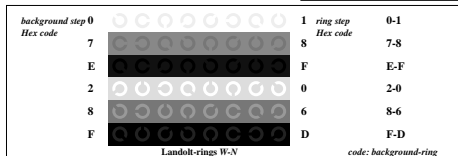


Picture C2: 5 visual equidistant  $L^*$ -grey steps +  $N_0$  +  $W_1$ ; PS operator: `www* setrgbcolor`

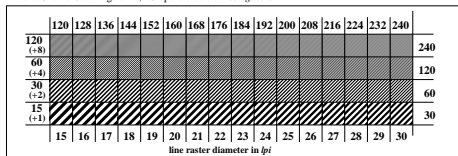


Picture C3: 16 visual equidistant  $L^*$ -grey steps; PS operator: `www* setrgbcolor`; use file [www.bam.de/KE89/10S/S89E00N.A.PS](http://www.bam.de/KE89/10S/S89E00N.A.PS) or [/S89E00N.PS](http://www.bam.de/KE89/10S/S89E00N.PS) for DPS or PDF systems to complete the figure

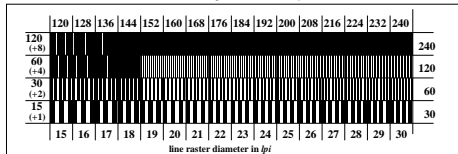
ISO/IEC-test chart no. 3 according to  
 ISO/IEC 15775 and input: `www*lin 1.0 exp setrgbcolor`  
 DIS ISO/IEC 19839-X; output: `www*lin 1.0 exp setrgbcolor`



Picture C4: Landolt-rings W-N; PS operator: `www* setrgbcolor`



Picture C5: Line raster under 45° (or 135°); PS operator: `www* setrgbcolor`



Picture C6: Line raster under 90° (or 0°); Use of the PS operator `www* setrgbcolor`